


PERSONAL NAVIGATOR



MONDAY, AUGUST 6, 2012

Sunrise: 6:40 a.m. Sunset: 7:52 p.m.

Evening Attire: Semi Formal

All Ashore: 8:30 a.m.

All Aboard: 5:00 p.m.

Gangway: Deck 1, Midship, & Deck 1, Aft

Monday: Cloudy High: 80°F/27°C

Tuesday: Cloudy High: 82°F/28°C

DISNEY'S CASTAWAY CAY



Assistance available at the entrance to the Walt Disney Theatre 30 minutes prior to show time.

WALT DISNEY THEATRE
DECKS 3 & 4, FORWARD

6:15 P.M. & 8:30 P.M.

Disney's Castaway Cay

Reserved exclusively for Guests on Disney Cruise Line Bahamian and Caribbean cruise vacations, Castaway Cay is Disney's private port-of-call paradise. On this island, enjoy tropical leisure activities, such as snorkeling, boating, swimming and sunbathing.

Friendly Reminders

- Serenity Bay is reserved for Guests 18 and older.
- Your Key To The World Card will need to be used for all transactions on Disney's Castaway Cay except for the Post Office.
- A limited number of all-terrain wheelchairs are available across from Scuttle's Cove.
- For your convenience, beach towels are available as you leave the ship; please return them at the gangway at the end of your day.
- Due to our commitment to the environment, we ask that seashells, coral and other natural treasures be left undisturbed at Disney's Castaway Cay for all to enjoy.

In Da Shade Games

Complimentary billiards, ping-pong, foosball, shuffleboard, giant checkers and basketballs are available for your enjoyment. Next to the Sports Beach.

Disney's
Mirror Mirror

MIRROR, MIRROR GAME SHOW

Join the Magic Mirror and Dopey in the fairest game show of them all, Mirror, Mirror. There's trivia, singing and even a relay race. Hi Ho, Hi Ho, its off to play we go!

5:30 & 10:15 p.m.
D Lounge
Deck 4, Midship

Don't Miss:

Run Disney: Castaway Cay 5K

Meet at 687 Pub (12+), Deck 4, Aft - 8:30 a.m.
Runners meet in 687 Pub, Deck 4, Aft, at 8:30 a.m. We will depart the ship at 8:45 a.m., and make our way to the Bike Rentals where the run will begin.

Crab Races

Castaway Cay, Gazebo 1 - 11:45 a.m.
Castaway Cay, Gazebo 2 - 12:45 p.m.

Watch some local sea creatures make a break for the finish line.

D Tunes Fam Jam

Deck Stage, Deck 11 - 2:30 p.m.

Find out what's HOT at this new dance party, featuring great Disney music, family dances, and a chance to win awesome prizes!

Club New Year's Eve

D Lounge, Deck 4, Midship, 10:45 p.m.

"The party don't start till you walk in" to Club New Year's Eve! Bring your family and help us count down to a brand new year!

Tomorrow we will be arriving in Nassau, the capital of the Bahamas! It is not too late to book an amazing adventure to Blue Lagoon Island, Atlantis, or you could book a semi-submarine ride.



Visit the Port Adventures desk today!
Deck 5, Midship

DINNER MENU
Animator's Palate: Pacific Rim Cuisine
Enchanted Garden: Continental Market
Royal Palace: French Dinner Menu

DRINK OF THE DAY
Bahama Mama (Alcoholic)
CoCo Bali (Non Alcoholic)

IMPORTANT NUMBERS
Fire/Security: 7-3001
Medical Emergency: 7-3000
Health Center: 7-1923

FAMILY ACTIVITY HIGHLIGHTS

RUN DISNEY: CASTAWAY CAY 5K

Meet in 687 Pub (12+), Deck 4, Aft - 8:30 a.m.
Runners meet in 687 Pub, Deck 4, Aft, at 8:30 a.m. We will depart the ship at 8:45 a.m., and make our way to the Bike Rentals where the run will begin. Come cheer on your friends and family as they cross the finish line!

ISLAND POWER WALK

Meet at the Post Office, Castaway Cay - 9:30 a.m.
Join your Cruise Staff for a brisk walk around the island. Meet outside, at the Post Office. Meet time is 9:30 a.m. Walk leaves promptly at 9:45 a.m.

CRAB RACES

Castaway Cay, Gazebo 1 (Near Cookies BBQ) - 11:45 a.m.
Castaway Cay, Gazebo 2 (Pelican Point Tram Stop) - 12:45 p.m.
Watch some local sea creatures make a break for the finish line.

BASKETBALL FREE THROW

In Da Shade Games, Castaway Cay - 12:00 p.m.
Join your Cruise Staff in this fun tournament and see how many you can sink in 30 seconds!

DISNEY ANIMATION: CREATING A CHARACTER

D Lounge, Deck 4, Midship - 3:00 p.m.
Go behind the scenes at Walt Disney Animation Studios and learn the basic techniques of drawing your favorite "friends," in this fun program. (Series continues with *Persistence of Vision* at 12:00 p.m. tomorrow)

DISNEY VACATION CLUB® GROUP PRESENTATION

Evolution, Deck 4, Aft - 4:30 p.m.
Want to learn more about taking magical vacations year after year? Stop by our interactive group presentation to find out more information from a Disney Vacation Club representative.

FAMILY DANCE PARTY

Evolution, Deck 4, Aft - 7:30 p.m.
Join your Cruise Staff in Evolution tonight and dance along to your favorite songs!



ADULT ACTIVITY HIGHLIGHTS

SENSES SPA SEMINARS

Body Sculpt Boot Camp (Fee Applies) - Basketball Court, 7:30 a.m.
Wake Up and Stretch - Senses Fitness Center, 8:00 a.m.
Yoga on the Beach - Serenity Bay, 10:30 a.m.
Fitness Frenzy (Fee Applies) - Outlook, 3:00 p.m.
Burn Fat Faster - Senses Fitness Center, 4:00 p.m.
Seminar: Acupuncture - Point of Well Being - Outlook, 5:00 p.m.
Fab Abs - Senses Fitness Center, 5:00 p.m.



TASTING SEMINARS

Martini Tasting - Meridian, 4:00 p.m.
Whiskey Tasting - Meridian, 9:00 p.m.
Cognac Tasting - Meridian, 10:30 p.m.
Please make reservations for tastings at Guest Services for a nominal fee. Tasting Seminars are only for Guest's 21 and older.

BASKETBALL FREE THROW

In Da Shade Games, Castaway Cay, 1:00 p.m.

X-BOX CHALLENGE

687 Pub, Deck 4, Aft, 4:30 p.m.

MIXER

Evolution, Deck 4, Aft, 10:00 p.m.



ESPN MONDAY NIGHT FOOTBALL CALL IT!

687 Pub, Deck 4, Aft - 5:00 p.m.
Test your Monday Night Football knowledge as you watch some of the greatest highlights in football history and then "make the call" as to what happens next!



NAME THAT 90'S TUNE

687 Pub, Deck 4, Aft - 7:30 p.m.
"Tell me what you want, what you really, really want"... know that tune? If so, join your Club Host, Max, as he tests your knowledge of 90's classics.

ROADHOUSE

Evolution, Deck 4, Aft - 11:15 p.m.
Join your Club Host, Max, and the Cruise Staff team, as they round up the greatest classic rock and urban country hits. With a special appearance by the Evolution Dancers.



FREE CARD BINGO

D Lounge, Deck 4, Midship
Card Sales - 4:00 p.m. Game Starts - 4:15 p.m.

Join your Cruise Staff for four cash prize games and fun raffle prizes. Game #3 is FREE for all players!

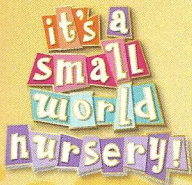
SENSES SPA JACKPOT BINGO

D Lounge, Deck 4, Midship
Card Sales - 7:15 p.m.
Game Starts - 7:30 p.m.

Four cash prizes up for grabs, plus great spa prizes to be won, including facials and massages courtesy of the Senses Spa & Salon.



YOUTH ACTIVITIES HIGHLIGHTS



Deck 5 Midship (7-5864) 9:00 a.m. - 1:00 a.m.

OPEN HOUSE
8:00 - 9:00 a.m.

Your chance to see our toddler space, It's A Small World Nursery.



Deck 5 Midship (7-1440) 4:00 p.m. - 12:00 Mid.
(3 - 12 years old)

CRUISIN' WITH CRUSH
4:15 p.m.

Learn to talk turtle while interacting with Crush from Disney/Pixar's Finding Nemo. It's "totally sweet"!

ONCE UPON A TIME
7:45 p.m.

Join Beverly the Bookmaker for a magical, musical story time featuring a Disney Princess!



Deck 5 Midship (7-1445) 5:00 p.m. - 1:00 a.m.
(3 - 12 years old)

GET THE HOOK
8:30 p.m.

A villainous villain has stolen Captain Hook's prized golden hook. Become a member of the Top Deck Detective Agency and help solve the clue's to retrieve Hook's hook.

SUPER SLOPPY SCIENCE
10:30 p.m.

Join Professor Make-O-Mess in some of the most extreme experiments you will ever see in the world of Super Sloppy Science!



Deck 13 Midship (7-9743) 4:00 p.m. - 1:00 a.m.
(11 - 14 years old)

THAT'S HILARIOUS
9:45 p.m.

A game of quick wit and improvisation where you become the star of the show. Work with your fellow cruisers to perform sketches and applaud loudly as you each have the chance to perform to a live audience.

MIRROR, MIRROR GAME SHOW
D Lounge, Deck 4, Midship - 12:15 a.m.

Join the Magic Mirror and Dopey in the fairest game show of them all, Mirror, Mirror. There's trivia, singing and even a relay race. Hi Ho, Hi Ho, its off to play we go!



Entrance on Deck 4 Forward (7-9417)
4:00 p.m. - 2:00 a.m.
(14 - 17 years old)

PUMP IT UP
9:00 p.m.

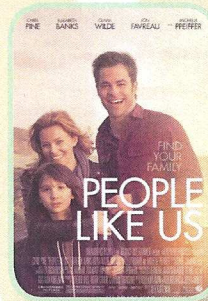
Join us for an exclusive teen only workout in the Senses Fitness Center! Pump It Up is offered daily from 9:00 p.m. - 11:00 p.m.. Please check in at Vibe if you would like to attend!

INVADE THE CLUB - MAGIC PLAYFLOOR
12:15 a.m.

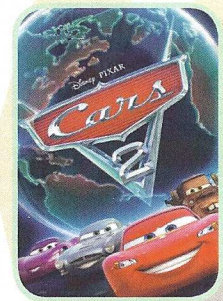
Explore the latest technology of the Oceaneer Club Magic Play Floor.

BUENA VISTA THEATRE

Today's Movies



10:30 a.m. & 11:00 p.m.
Run Time: 1 hr 55 min
Rated: PG-13



2:30 p.m.
Run Time: 1hr 55 min
Rated: G



5:00 p.m. & 8:00 p.m.
Run Time: 2 hr 26 min
Rated: PG-13



"The party don't start till you walk in" - to Club New Year's Eve!
Bring your family and help us count down to a brand new year!

**D Lounge,
Deck 4, Midship**
10:45 p.m.



GAME SHOW

It's time to play everyone's favorite couples game show
Match Your Mate!

**Evolution (18+),
Deck 4, Aft**
10:30 p.m.

YOUTH ACTIVITIES OPEN HOUSE

Open House is an opportunity for all to come and participate in a variety of exciting activities and free time in the Oceaneer Club, Lab, Edge & Vibe throughout the cruise. During these times secured programming will still be offered in the other venue for those looking to check their children into care.

MORE TO ENJOY WHILE ONBOARD

ONBOARD AIRLINE CHECK IN

If you would like to have your boarding passes printed for you onboard and have your luggage taken to the airport for you, today at 8:00 p.m. is the last chance to enroll. If you have Disney Cruise Line airport transfer to Orlando International Airport and are flying with one of the participating airlines, please come to the Guest Services Desk on Deck 3, Midship.

READY TO SHOP IN NASSAU?

Join your Shopping Guide, Nicholas, for the one of a kind Diamond and Gemstone Seminar at 4:30 p.m., in the District Lounge, Deck 4, Aft. Learn all of the insider secrets and bargaining tactics for shopping ashore in Nassau. In addition, everyone attending will be entered into a raffle to win a fabulous prize! Make sure you drop by the Port and Shopping Desk, from 5:00 p.m. – 8:00 p.m. to pick up your VIP cards and receive your FREE savings ashore coupon book. Tune to Channel 9 for more information.

PLAN YOUR NEXT CRUISE

Please visit the Future Cruise Desk, Deck 4, Midship, as early as possible today. We want to be sure you have the opportunity to save 10% on your next cruise, receive up to a \$200 onboard credit, and pay a reduced deposit! Tune to Channel 8 for details.

Disney CRUISE LINE. PORT ADVENTURES

Welcome to Disney's Island Paradise Castaway Cay. Today is the day to relax in an inner tube, snorkel in the Caribbean blue, get up-close and personal to real life stingrays or fly high in the sky on a parasail excursion during a breathtaking aerial adventure.

Visit Marge's Barges or one of the rental locations and our friendly team will assist in making any last minute bookings.

PORT ADVENTURES MEETING TIMES AND LOCATIONS

As per ticket	Castaway Ray's Stingray Adventure	Gil's Fins and Boats
As per ticket	Glass Bottom Boat	Marge's Barges
As per ticket	Nature Walk and Kayaking	
As per ticket	Parasailing	Marge's Barges
As per ticket	Watercraft Ski Adventure	Boat Beach

CASTAWAY CAY ISLAND RENTALS

Bicycles	9:30 a.m. - 4:00 p.m.	Near Cookies Too
Boats	9:30 a.m. - 4:00 p.m.	Boat Beach
Snorkeling Gear	9:30 a.m. - 3:30 p.m.	Gil's Fins and Boats / Flippers and Floats
Float	9:30 a.m. - 3:30 p.m.	Gil's Fins and Boats / Flippers and Floats
Getaway Package	9:30 a.m. - 3:30 p.m.	Gil's Fins and Boats / Flippers and Floats

Reservations can be made on the island at each rental location. Castaway Ray's walk up reservations can be made at Gil's Fins and Boats on Family Beach.



SALON TASTER SPECIAL

Choose from scalp massage, European facial, hand treatment, sunglow make-over, hair treatment, eye-collagen treatment, foot & ankle massage and neck & shoulder massage.

Three for \$99, five for \$119, and eight for \$139.

Senses Spa & Salon, Deck 11, Forward, Ext. 7-1465

ARLEE KASSELMAN JEWELRY DESIGN SAYS... EMBRACE YOUR PERSONAL STYLE

Select from exquisite designer jewelry, handcrafted from fine silver, 22K gold vermeil and high quality gemstones.



Whitecaps, Deck 3, Forward

Shutters PROFESSIONAL PORTRAITS

Moon – Six Guests maximum
Grand Staircase – Groups accommodated

5:00 p.m. - 6:00 p.m.

7:15 p.m. - 8:30 p.m.

9:30 p.m. - 10:30 p.m.

**Please note that photos are available for viewing on our interactive photo kiosks approximately five hours after being taken and are only available for purchase during this cruise.*

SHOPPING

CASTAWAY CAY EXCLUSIVE TREASURES

Take home memories of your magical experiences at our island paradise, Disney's Castaway Cay. She Sells... and Everything Else & Buy the Seashore are your island memory destinations where you can find everything from apparel to push to postcards to swimwear and, well, everything else!

CELEBRATE YOUR SUCCESS!

Doing the 5K run today? Celebrate your success with the Castaway-exclusive 5K t-shirt. Let your achievement live on well after your cruise has finished. Exclusively at Buy the Seashore.

SMOLDERING SAVINGS ONBOARD

Shop exquisite items from the labels you love the most – Gucci, Ray Bans, Maui Jims, need I say more? Indulge yourself with items from fashion icons the world over. Chic, fashionable styles of jewelry, fragrances that will compliment all of your looks and a great range of liquor Duty Free. Available at Whitecaps. Deck 3, Forward.

VISTA GALLERY - THE HOME OF DISNEY ART WORK.

Original pieces, such as hand painted Mickey metal heads by various well-known Disney artists. Pixar/Disney movie artwork and Dream/Disney Cruise Line exclusive artwork available! Discounted shipping available on two or more pieces of art. Deck 4, Midship.

JUST ARRIVED TO THE DREAM!

Come discover the island inspired fashions of Tori Richards. With this collection the entire family can take the magic, wonder and dream of tropical life and relaxation anywhere you go. Experience the island fantasy at Sea Treasures, Deck 3, Forward.

SHOPPING ONBOARD

Tax and duty free shopping right here on board. A great range of jewelry, fragrance and liquor all at competitive prices is available in Whitecaps. Buy onboard and we will package it safely for your journey home.

Due to port regulations, when the ship is docked, the stores will remain closed.

IMPORTANT INFORMATION

Security Notice

All Guests (including children) who wish to disembark the ship are required to present their Key to the World card at the gangway. A photo ID is also required for those Guests who are 18 years of age or older. Guests under the age of 18 are required to have a Parent, Guardian or other responsible adult sign an authorization form at the time it is given out if they wish to go ashore unaccompanied. Authorization forms are available at the gangways and Guest Services.

Cold and Flu Reminder

Please wash hands frequently and thoroughly, particularly before meals. Contact the Health Center by dialing 7-1923, should anyone in your party become ill.

Corridor Quiet Hours

As a courtesy to all our Guests, please recognize quiet hallway hours from 10:00 p.m. til 8:00 a.m.

Inclement Weather

For the safety of all Guests, outdoor events may be changed due to unforeseen weather conditions.

Environmental Message

With Disney's commitment to the Environment, please refrain from throwing anything over the Ship's side. Thank you!

No Reserved Seats Policy

As a courtesy to all our Guests, we kindly advise that the saving of seats is not permitted in the Walt Disney Theatre, and the saving of the sun loungers is not permitted on Deck 11, 12 and 13. Items left unattended will be returned to lost and found at Guest Services, Deck 3 Midship.

Smoking

For the comfort of our guests the following areas are designated as Smoking areas:

- Deck 13, Forward, port side, by "Currents"
- Deck 12, Aft, port side outdoor area that is accessible through the Meridian Lounge
- Deck 4, Aft, port side from 6:00 p.m. to 6:00 a.m. only (all of Deck 4 is no smoking from 6:00 a.m. to 6:00 p.m.)

-Smoking is permitted on stateroom verandahs.

Smoking is prohibited inside all guest staterooms. Guests found smoking in their staterooms will be charged a \$250 stateroom recovery fee.

Walt Disney Theatre

Theatrical performances may use artificial fog, strobe lights, pyrotechnics and other special effects. For the safety of our performers and the comfort of those around you, the use of any photography, video recording devices or any electronic equipment is prohibited.

Verandah Safety

Please do not leave any combustible materials on your balcony when not present in your stateroom for safety reasons.

Morning	8:30	8:45	9:00	9:15	9:30	9:45	10:00	10:15	10:30	10:45	11:00	11:15	11:30	11:45	12:00	12:15	12:30	12:45	1:00	1:15	1:30							
FUNNELVISION	The Hunchback of Notre Dame (G) FunnelVision										Beauty and the Beast (G) FunnelVision																	
MOVIES											People Like Us (PG-13) Buena Vista Theatre																	
CHARACTER	Pluto Post Office Gangway	Jack Sparrow Island Pathway Gangway	Mickey Scuttles Gangway	Hook & Smee Gangway	Minnie Scuttles Rustmore	Lilo & Stitch Gangway	Mickey Rustmore	Hook & Smee Gangway	Goofy Scuttles Rustmore	Chip & Dale Character Dance Party Gazebo 2 Island Gazebo 1																		
FUN FOR ALL AGES	Run Disney: Castaway Cay 5K Meet at 687 Pub (Departs at 8:45 a.m.)					Island Power Walk/Stroller Fitness Meet at the Post Office at 9:30 a.m., Departs at 9:45 a.m.					Beach Volleyball Sports Beach			Crab Races Gazebo 1			Crab Races Gazebo 2			Basketball Free Throw In Da Shade Games			Character Dance Party Island Gazebo 1			Family Whale Dig Monstro Point		
ADULTS	Friends of Bill W. Outlook					Yoga on the Beach Serenity Bay					Basketball Free Throw In Da Shade Games					18*21 Basketball Challenge In Da Shade Games												
	Rise & Shine Club Cove Cafe															Two for One Mojitos Heads Up Bar												
VIBE	Teen Hideout Opens - until 4:00 p.m.																											
EDGE											In Da Shade Games Pavillion										Lunch Cookies Too		Basketball Runway					
SCUTTLES COVE	Water Relays					Sebastian Sea Search					Treasure Hunt					Lunch					Volleyball							
	Vacation Crafts					♥ Whale Dig					♥ Whale Dig										Sand Castle Competition							
OCEANEER LAB																												
OCEANEER CLUB	🎮 Youth Activities Open House																											

Symbol for activities that will be repeated during the cruise



Afternoon	1:45	2:00	2:15	2:30	2:45	3:00	3:15	3:30	3:45	4:00	4:15	4:30	4:45	5:00	5:15	5:30	5:45	6:00	6:15	6:30	6:45							
FUNNELVISION	Virtual Tours		D Tunes Fam Jam			The Little Mermaid (G) FunnelVision						Lady and the Tramp (G) FunnelVision																
MOVIES	Cars 2 (G) DOLBY 3D Buena Vista Theatre										The Avengers (PG-13) DOLBY 3D Buena Vista Theatre >7:26 p.m.																	
CHARACTER						Lilo & Stitch Gangway					Mickey Mouse Deck 4, Balcony					Snow White Atrium												
						Pluto Gangway					Minnie Atrium					Tiana Atrium												
FUN FOR ALL AGES	DJ Kurtis Spins Gazebo 1		D Tunes Deck Stage, Deck 11, Midship			Disney Animation: Creating a Character D Lounge			Bingo Pre Sales		Free Card BINGO D Lounge			Ping Pong Deck 13, Aft		Disney's Mirror D Lounge		Red Carpet Arrivals Preludes		THE GOLDEN MICKKEYS A Timeless Tribute Walt Disney Theatre								
	Super Sloppy Science Oceaneer Club										Magic Playfloor Oceaneer Lab		Disney Vacation Club Presentation															
ADULTS						Live Guitar with David Kenny Quiet Cove					Martini Tasting (21+) Meridian (Pre Book/Nom Fee)		18*21 X-Box 687 Pub		ESPN MNF Call It! 687 Pub													
						Fitness Frenzy (Fee applies) Basketball Court (Meet in Spa 10 min prior)					Burn Fat Faster Senses Fitness Center		Diamond & Gemstone Seminar District Lounge		Live Piano with Tom Scott District Lounge													
VIBE	Chillin' in Vibe																											
EDGE	Sand Soccer Sports Beach		Invade Hideout - Until 4:00 p.m.					Tween Pool Party					Chillin' in the Edge															
SCUTTLES COVE	♥ Caribbean Beach Party					Sand Soccer																						
OCEANEER LAB																												
OCEANEER CLUB	🎮 Youth Activities Open House										🎮 Cruisin' with Crush			Dinner			Mirror, Mirror			Dinner						🎮 Toy Story Boot Camp		

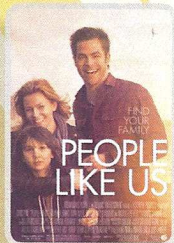
Fold along the dotted lines and take me with you so you don't miss any of the fun!



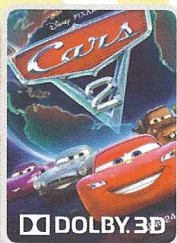
Evening	7:00	7:15	7:30	7:45	8:00	8:15	8:30	8:45	9:00	9:15	9:30	9:45	10:00	10:15	10:30	10:45	11:00	11:15	11:30	11:45	12:00							
FUNNELVISION	Mulan (G) FunnelVision										Tarzan (G) FunnelVision																	
MOVIES	The Avengers (PG-13) DOLBY 3D Buena Vista Theatre										People Like Us (PG-13) Buena Vista Theatre >12:55 a.m.																	
CHARACTER	Mickey Mouse Deck 4, Balcony					Cinderella Atrium					Mickey DK 4, Balcony					Minnie Mouse Lobby Atrium												
	Ariel Atrium										Aurora Atrium					Mickey DK 4, Balcony												
FUN FOR ALL AGES	Bingo Pre Sales		Senses Spa BINGO D Lounge			Red Carpet Arrivals Preludes		THE GOLDEN MICKKEYS A Timeless Tribute Walt Disney Theatre				Live Music with The Dreamers Lobby Atrium			Disney's Mirror D Lounge		Disney MICKKEYS D Lounge											
	Family Dance Party Evolution															Live Piano with Tom Scott Lobby Atrium												
ADULTS	Name That 90's Tune 687 Pub					Whiskey Tasting (21+) Meridian (Pre Book/Nom Fee)					Georgetown Trio LIVE District Lounge			Match Your Mate Evolution			Roadhouse with Guest DJ Pete Evolution											
	Georgetown Trio LIVE District Lounge					Live Piano with Tom Scott District Lounge					18*21 Mixer Evolution			Georgetown Trio District Lounge			Georgetown Trio LIVE District Lounge											
VIBE	Teen AquaDuck										Pump It Up																	
EDGE	Tween AquaDuck										That's Hilarious												Magic Show		Hangin' in Vibe - Until 2:00 a.m.			
																							Hangin' in Edge - Until 1:00 a.m.					
OCEANEER LAB	♥ Anyone Can Cook					♥ Get the Hook					♥ Magic Playfloor					♥ Super Sloppy Science					♥ Magic Playfloor							
OCEANEER CLUB	Memory Wall			♥ Once Upon a Time		♥ Animation Antics					♥ Pluto's PJ Party					♥ Tinker Bell's Talent Show												

IN THE SPOTLIGHT SERIES
SOLVE IT! SERIES
JUMP UP! SERIES
CREATE & INVENT SERIES
OPEN HOUSE
CLUBHOUSE SERIES
STORYBOOK SERIES

BUENA VISTA THEATRE



10:30 a.m. & 11:00 p.m.
Run Time: 1 hr 55 min
Rated: PG-13



2:30 p.m.
Run Time: 1 hr 55 min
Rated: G



5:00 p.m. & 8:00 p.m.
Run Time: 2 hr 26 min
Rated: PG-13

Character Appearances

DAISY DUCK

Gangway
8:45 a.m. & 9:45 a.m.

PLUTO

Post Office
8:45 a.m. & 9:45 a.m.
Gangway - 3.30 p.m.

JACK SPARROW

Island Pathway - 9:00 a.m.
Pelican Point - 10:15 a.m.

LILO & STITCH

Gangway
9:00 a.m., 10:00 a.m.,
& 3:00 p.m.

MICKEY MOUSE

Scuttle's Cove - 9:15 a.m.
Mt. Rustmore - 10:15 a.m.
Deck 4, Balcony - 5:00 p.m.,
7:15 p.m. & 9:30 p.m.

DONALD DUCK

Mt. Rustmore - 9:15 a.m.
Scuttle's Cove - 10:15 a.m.

HOOK & SMEE

Gangway
9:30 a.m. & 10:30 a.m.

CHIP & DALE

Post Office
9:15 a.m. & 10:15 a.m.
Island Gazebo 2 - 12:00 p.m.

GOOFY

Mt. Rustmore - 9:45 a.m.
Scuttle's Cove - 10:45 a.m.

MINNIE MOUSE

Scuttle's Cove - 9:45 a.m.
Mt. Rustmore - 10:45 a.m.
Lobby Atrium - 5:15 p.m.,
7:30 p.m. & 9:45 p.m.

CHARACTER DANCE PARTY

Island Gazebo 1 - 12:15 p.m.

SNOW WHITE

Lobby Atrium - 5:00 p.m.

PRINCESS TIANA

Lobby Atrium
5:30 p.m. & 10:15 p.m.

ARIEL

Lobby Atrium - 7:30 p.m.

CINDERELLA

Lobby Atrium - 8:00 p.m.

PRINCESS AURORA

Lobby Atrium - 9:45 p.m.



Don't forget your camera to capture those Magical Moments!

For details of daily Disney character appearances, refer to the character line in your Navigator Grid.

YOUTH ACTIVITIES THEMED EXPERIENCES

CLUBHOUSE SERIES
focuses on movement and features content which appeals to younger children.

STORYBOOK SERIES
is designed with a strong connection to the Disney classic stories.

JUMP UP! SERIES
includes large ground games & movement-oriented activities.


CREATE & INVENT SERIES
will have a tactile focus allowing children to create and admire their work.

IN THE SPOTLIGHT SERIES
focuses on children's stage presence with lots of activities and enthusiasm.

SOLVE IT! SERIES
are less active, but will challenge children with problem/solutions based activities.

OPEN HOUSE

activities for families, adults and children of all ages to enjoy together.



GOOFY'S SPORTS Digital Simulators

Sports Simulator
(Basketball, Baseball, Hockey, or Soccer)
\$12 / half hr, \$20 / hr

Golf Simulator
\$25 / half hr, \$45 / hr

Reservations can be made at the Port Adventures Desk, Deck 5, Midship or at the Simulators, Deck 13, Aft

SHIP DIRECTORY

YOUTH ACTIVITIES

DISNEY'S OCEANEER CLUB	DECK 5, MID	4:00 P.M. - 12:00 MID.
DISNEY'S OCEANEER LAB	DECK 5, MID	5:00 P.M. - 1:00 A.M.
EDGE	DECK 13, MID	4:00 P.M. - 1:00 A.M.
VIBE	DECK 4, FWD	4:00 P.M. - 2:00 A.M.
IT'S A SMALL WORLD NURSERY	DECK 5, MID	9:00 A.M. - 1:00 A.M.

RECREATION

AQUADUCK	DECK 12, MID	10:00 A.M. - 12:00 MID.
BASKETBALL COURT	DECK 13, AFT	12:00 A.M. - 6:00 P.M.
DONALD'S POOL	DECK 11, MID	6:00 A.M. - 12:00 MID.
GOLF/SPORTS SIMULATOR	DECK 13, AFT	1:00 P.M. - 6:00 P.M.
GOOFY & MAX'S MINI GOLF	DECK 13, AFT	8:00 A.M. - 10:00 P.M.
MARGE'S BARGES	CASTAWAY CAY	9:00 A.M. - 3:30 P.M.
MICKEY'S POOL	DECK 11, MID	6:00 A.M. - 12:00 MID.
MICKEY'S SLIDE	DECK 11, MID	10:00 A.M. - 7:00 P.M.
MIDSHIP DETECTIVE AGENCY	DECK 5, MID	8:00 A.M. - 11:00 P.M.
NEMO'S REEF	DECK 11, MID	10:00 A.M. - 7:00 P.M.
PORT ADVENTURES DESK	DECK 5, MID	6:00 P.M. - 10:00 P.M.
QUIET COVE POOL	DECK 11, FWD	6:00 A.M. - 12:00 MID.
SENSES FITNESS CENTER	DECK 11, FWD	6:00 A.M. - 10:00 P.M.

GENERAL INFORMATION

ARR-CADE	DECK 11, AFT	24 HOURS
DISNEY VACATION CLUB	DECK 4, MID	6:00 P.M. - 10:00 P.M.
FUTURE CRUISE SALES DESK	DECK 4, MID	9:30 A.M. - 10:30 A.M. 4:00 P.M. - 6:00 P.M. 7:30 P.M. - 9:00 P.M.
GUEST SERVICES	DECK 3, MID	24 HOURS
HAIR BRAIDING	DECK 11, MID	5:30 P.M. - 10:00 P.M.
MEDICAL HEALTH CENTER	DECK 1, FWD	9:30 A.M. - 11:00 A.M. 4:30 P.M. - 7:00 P.M.
PORT & SHOPPING DESK	DECK 4, MID	6:00 P.M. - 8:00 P.M. 9:30 P.M. - 10:30 P.M.
PRELUDES	DECK 3, FWD	5:45 P.M. - 6:30 P.M. 8:00 P.M. - 8:45 P.M.
SENSES SPA AND SALON	DECK 11, FWD	8:00 A.M. - 10:00 P.M.
SHUTTERS PHOTO GALLERY	DECK 4, MID	5:00 P.M. - 11:00 P.M.

SHOPPING

MICKEY'S MAINSAIL	DECK 3, FWD	5:30 P.M. - 11:00 P.M.
SEA TREASURES	DECK 3, FWD	5:30 P.M. - 11:00 P.M.
VISTA GALLERY	DECK 4, MID	7:00 P.M. - 11:00 P.M.
WHITECAPS	DECK 3, FWD	5:30 P.M. - 11:00 P.M.
WHOZITS & WHATZITS	DECK 11, MID	7:00 P.M. - 10:00 P.M.

DUE TO PORT REGULATIONS, WHEN THE SHIP IS DOCKED, THE STORES MUST REMAIN CLOSED.

DINNER MENU

Animator's Palate: Pacific Rim Cuisine
Enchanted Garden: Continental Market Cuisine
Royal Palace: French Dinner
Dining Times: 5:45 p.m. & 8:15 p.m.

DRINK OF THE DAY

Bahama Mama (Alcoholic)
Coco Bali (Non Alcoholic)

WEATHER FORECAST

Monday: Cloudy
High: 80°F/27°C
Tuesday: Cloudy
High: 82°F/28°C

Evening Attire: Semi Formal

DINING & LOUNGES

BREAKFAST

CABANAS CONTINENTAL (PORT SIDE)	DECK 11, AFT	7:00 A.M. - 7:30 A.M.
CABANAS	DECK 11, AFT	7:30 A.M. - 10:45 A.M.
ENCHANTED GARDEN	DECK 2, MID	8:00 A.M. - 10:00 A.M.
ROYAL PALACE	DECK 3, MID	8:00 A.M. - 9:30 A.M.

LUNCH

CABANAS	DECK 11, AFT	12:00 P.M. - 1:30 P.M.
COOKIES BBQ	CASTAWAY CAY	11:30 A.M. - 2:00 P.M.
COOKIES BBQ TOO	CASTAWAY CAY	11:30 A.M. - 2:00 P.M.
FILLMORE'S FAVORITES	DECK 11, MID	11:00 A.M. - 6:00 P.M.
LUIGI'S PIZZA	DECK 11, MID	11:00 A.M. - 6:00 P.M.
TOW MATER'S GRILL	DECK 11, MID	11:00 A.M. - 6:00 P.M.

DINNER

ANIMATOR'S PALATE	DECK 3, AFT	5:45 P.M. & 8:15 P.M.
ENCHANTED GARDEN	DECK 2, MID	5:45 P.M. & 8:15 P.M.
ROYAL PALACE	DECK 3, MID	5:45 P.M. & 8:15 P.M.
CABANAS TABLE SERVICE	DECK 11, AFT	6:30 P.M. - 8:30 P.M.
PAOLO & REMY (18+)	DECK 12, AFT	6:00 P.M. - 9:00 P.M.

(RESERVATION REQUIRED & COVER CHARGE APPLICABLE. DIAL #7-9734)

TOW MATER'S GRILL	DECK 11, MID	6:00 P.M. - 11:00 P.M.
-------------------	--------------	------------------------

LATE NIGHT SNACKS

LUIGI'S PIZZERIA	DECK 11, MID	9:30 P.M. - 12:00 MID.
------------------	--------------	------------------------

ADDED FEATURES

BEVERAGE STATION	DECK 11, AFT	24 HOURS
EYE SCREAM	DECK 11, MID	11:00 A.M. - 11:00 P.M.
ROOM SERVICE	DIAL 0	24 HOURS

ENTERTAINMENT - LOUNGES - BARS

Adults must be 21 and older to consume alcoholic beverages.

687 PUB	DECK 4, AFT	5:00 P.M. - 9:00 P.M.
687 PUB (18+)	DECK 4, AFT	9:30 P.M. - 12:30 A.M.
BON VOYAGE	DECK 3, MID	3:00 P.M. - 11:00 P.M.
COVE BAR (18+)	DECK 11, FWD	11:00 A.M. - 10:00 P.M.
COVE CAFE (18+)	DECK 11, FWD	7:00 A.M. - 6:00 P.M.
COVE CAFE WINE BAR (18+)	DECK 11, FWD	6:00 P.M. - 12:00 MID.
CURRENTS	DECK 13, FWD	2:00 P.M. - 11:00 P.M.
D LOUNGE	DECK 4, MID	SHOWTIMES
DISTRICT LOUNGE	DECK 4, AFT	4:30 P.M. - 9:00 P.M.
DISTRICT LOUNGE (18+)	DECK 4, AFT	9:00 P.M. - 12:00 MID.
EVOLUTION (18+)	DECK 4, AFT	10:00 P.M. - 2:00 A.M.
FROZONE TREATS	DECK 11, MID	11:00 A.M. - 11:00 P.M.
MERIDIAN (18+)	DECK 12, AFT	5:00 P.M. - 12:30 A.M.
OUTLOOK	DECK 14, MID	SUNSET TIMES
PINK	DECK 4, AFT	5:00 P.M. - 12:30 A.M.
SKYLINE (18+)	DECK 4, AFT	5:00 P.M. - 12:30 A.M.
VISTA CAFE	DECK 4, MID	7:30 A.M. - 11:00 P.M.
WAVES	DECK 12, AFT	3:00 P.M. - 7:00 P.M.

CASTAWAY CAY BARS

CONCHED OUT BAR	CASTAWAY CAY	9:30 A.M. - 4:00 P.M.
CASTAWAY AIR BAR	CASTAWAY CAY	9:30 A.M. - 3:30 P.M.
HEADS UP BAR	CASTAWAY CAY	10:00 A.M. - 3:30 P.M.
SAND BAR	CASTAWAY CAY	10:30 A.M. - 3:30 P.M.

Consumers who order raw or partially cooked, ready-to-eat food of animal origin, are hereby informed that the food is not sufficiently cooked to ensure its safety.

IMPORTANT NUMBERS

Fire/Security: 7-3001
Medical EMERGENCY: 7-3000
Health Center: 7-1923

All Ashore: Approx. 8:30 a.m.

All Aboard: 5:00 p.m.