

PERSONAL NAVIGATOR

TUESDAY, AUGUST 7, 2012

Sunrise: 6:41 a.m. Sunset: 7:49 p.m.

Evening Attire: Cruise Casual

All Ashore: 9:45 a.m.

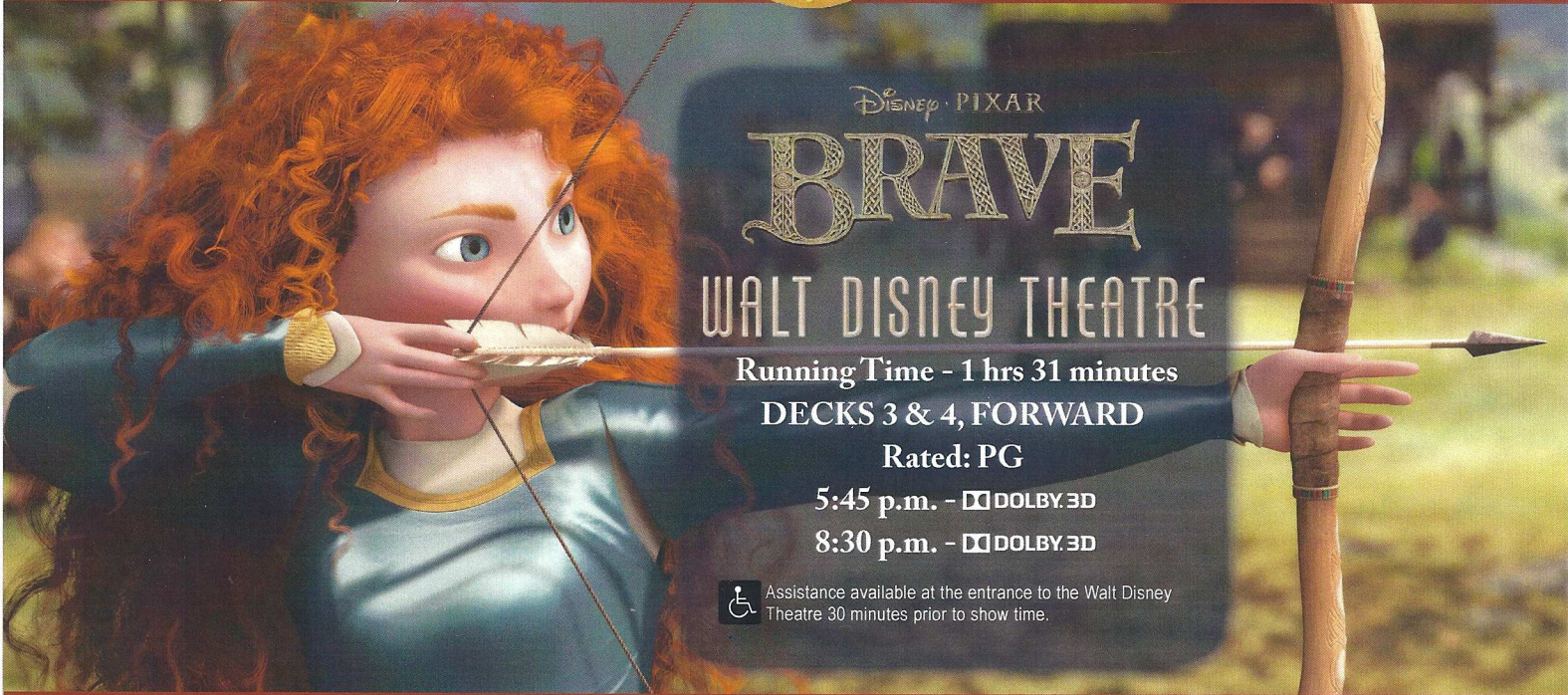
All Aboard: 6:15 p.m.

Gangway: Deck 1, Midship, & Deck 1, Forward

Tuesday: Partly Sunny High: 82 °F/28°C

Wednesday: Partly Sunny High: 84°F/29°C

NASSAU



Nassau Port Information

While you will find many great experiences in Nassau, there have been reports of increased crime, including assaults and robberies involving tourists in the area. As in any large city, you'll want to take some basic precautions to make the most of your time ashore.

- Be aware of your surroundings at all times, just as you would in your normal daily activities.
- Avoid short cuts, narrow alleys or poorly lit streets. We recommend that guests only visit the downtown shopping areas and other tourist locations.
- Leave valuables in your room safe and avoid carrying large amounts of cash. Exercise caution when using ATMs. Cameras and handbags should be carried out of sight and secured to your person with a strap.
- Leave passports, air transportation tickets and other travel documents in your room safe. When going ashore, each adult is required to carry a Driver's license, copy of passport or other government-issued photo ID.
- If traveling by taxi, use only licensed taxi operators.
- In general, use the same level of precaution you would use in any tourist destination.
- Most crimes are easier to commit in dark unlit areas. You should stay out of these types of areas and consider returning to the ship before nightfall. If you stay out at night, please be extra vigilant about your personal safety.



Family Dream Quest

Enjoy the wildest and wackiest scavenger team event on the seven seas!

7:30 & 9:45 p.m.

D Lounge,
Deck 4, Midship

Don't Miss:

Disney Animation: Persistence of Vision

Evolution, Deck 4, Aft - 1:00 p.m.

Go behind the scenes at Walt Disney Animation Studios and learn the principles that make animation work, and try your hand at creating your own easy animation demonstration in this fun and fascinating enrichment program. (Series continues with *Creating a Character* at 1:00 p.m. tomorrow.)

Disney Friends Meet & Greet

Lobby Atrium, Deck 3, Midship - 2:30 p.m.

Bring your cameras along to these fun meet and greet opportunities.

Art of the Theme Show Tour

Meet at Meridian (18+), Deck 12, Aft - 2:45 p.m.

Join us on a guided ship tour and discover the ingredients that make the Disney Dream cruise ship one-of-a-kind.

Family Superstar Karaoke

D Lounge, Deck 4, Midship - 6:00 p.m. & 8:15 p.m.

Calling all singing superstars! Join your Cruise Staff in D Lounge and sing along to your favorite song - fun for everyone.

Welcome to Nassau, capital of the Bahamas. It is not too late to book an amazing adventure to Blue Lagoon Island, Atlantis, or you could book a semi-submarine ride.

All Port Adventures meet onboard the ship in Nassau. Please check your tour tickets for meeting times and locations.

Port Adventures Desk, Deck 5, Midship



DINNER MENU

Animator's Palate: Pacific Rim Cuisine
Enchanted Garden: Continental Market
Royal Palace: French Dinner

DRINK OF THE DAY

Yellow Bird (Alcoholic)
Parrot Song (Non Alcoholic)

IMPORTANT NUMBERS

Fire/Security: 7-3001
Medical Emergency: 7-3000
Health Center: 7-1923

FAMILY ACTIVITY HIGHLIGHTS

MAKING OF THE DREAM

Evolution, Deck 4, Aft - 12:00 p.m.

Explore the origins of Disney Cruise Line—and the latest and greatest innovations conjured especially for the Disney Dream ships in this fascinating and entertaining behind-the-scenes program.

ABC PILOT PREMIERE: NASHVILLE

Buena Vista Theatre, Decks 4 & 5, Midship - 12:00 p.m.

Chart-topping Rayna James' popularity is starting to wane. Her record label thinks a concert tour opening for the future of country music, Juliette, is just what Rayna needs. But scheming Juliette can't wait to steal Rayna's spotlight setting up a power struggle for popularity. Could this be the key to helping Rayna resurrect her career? Come find out by joining us for this special sneak preview!

DISNEY ANIMATION: PERSISTENCE OF VISION

Evolution, Deck 4, Aft - 1:00 p.m.

Go behind the scenes at Walt Disney Animation Studios and learn the principles that make animation work, and try your hand at creating your own easy animation demonstration in this fun and fascinating enrichment program. (Series continues with *Creating a Character* at 1:00 p.m. tomorrow.)

DISNEY TRIVIA

D Lounge, Deck 4, Midship - 2:00 p.m.

Join your Cruise Staff as they put your Disney knowledge to the test!

FAMILY CRAFTS - SCRAPBOOKING

D Lounge, Deck 4, Midship - 2:45 p.m.

Start creating and collecting your cruise memories at this scrapbooking session. Your Cruise Staff will be on hand with a special gift for all attendees.

DISNEY VACATION CLUB® GROUP PRESENTATION

Evolution, Deck 4, Aft - 3:00 p.m.

Want to learn more about taking magical vacations year after year? Stop by our interactive group presentation to find out more information from a Disney Vacation Club representative.



D TUNES FAM JAM

D Lounge, Deck 4, Midship - 10:15 p.m.

Find out what's HOT at this new dance party, featuring great Disney music, family dances, and a chance to win awesome prizes!



ADULT ACTIVITY HIGHLIGHTS

SENSES SPA SEMINARS

Body Sculpt Boot Camp (Fee Applies) - Basketball Court, 7:30 a.m.

Wake Up & Stretch - Senses Fitness Center, 9:00 a.m.

Pathway to Pilates - Senses Fitness Center, 3:00 p.m.

Seminar: Acupuncture for Pain Control - Senses Spa & Salon, 3:00 p.m.

Fitness Frenzy - Basketball Court, 3:00 p.m.

Seminar: Secrets to a Flatter Stomach - Senses Spa & Salon, 4:00 p.m.

Total Body Conditioning - Senses Fitness Center, 5:00 p.m.



TASTING SEMINARS

Martini Tasting - Meridian, 4:00 p.m.

Mixology - Skyline, 5:00 p.m.

Whiskey Tasting - Meridian, 9:00 p.m.

Cognac Tasting - Meridian, 10:30 p.m.

Please make reservations for tastings at Guest Services for a nominal fee.

Tasting Seminars are only for Guest's 21 and Older.

CLUB
18*21

MINI GOLF CHALLENGE

Goofy's Sports Deck, Deck 13, Aft, 5:00 p.m.

MIXER

Evolution, Deck 4, Aft, 10:00 p.m.

DISNEY ANIMATION: CREATING A CHARACTER

Evolution, Deck 4, Aft - 2:00 p.m.

Go behind the scenes at Walt Disney Animation Studios and learn the basic techniques of drawing your favorite "friends," in this fun program.

ART OF THE THEME SHOW TOUR

Meet at Meridian, Deck 12, Aft - 2:45 p.m. (Repeated throughout the cruise)

A walking tour that highlights the ship's design of Disney culture, theming and artistry.

80'S MUSIC CHALLENGE

Evolution, Deck 4, Aft - 10:30 p.m.

Join your Club Host, Max, and the Cruise Staff team as they test your 80's music knowledge in this interactive challenge.



8TRAX (70'S REMIX)

FOLLOWED BY GUEST DJ PETE

Evolution, Deck 4, Aft - 11:00 p.m.

Join your Club Host, Max, & the Cruise Staff for a 70's disco fever epidemic. With a special appearance by the Evolution Dancers.

GOODIE GIVEAWAY BINGO

D Lounge, Deck 4, Midship

Card Sales - 4:15 p.m.

Game Starts - 4:30 p.m.

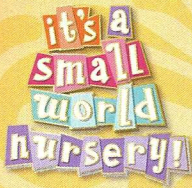
Join your Cruise Staff for four cash prize games and fun raffle prizes. Also, everyone will walk away with some free goodies!



YOUTH ACTIVITIES HIGHLIGHTS

DINE & PLAY

A convenience for families dining at 8:15 p.m., our Youth Activities Counselors will be available at 9:15 p.m. at the entrance of Royal Palace, Enchanted Garden and Animator's Palate dining rooms to bring registered children to join the fun in the Youth Activity areas.



Deck 5 Midship (7-5864) 9:00 a.m. - 1:00 a.m.

OPEN HOUSE

8:00 - 9:00 a.m.

Your chance to see our toddler space, It's A Small World Nursery.



Deck 5 Midship (7-1440) 9:00 a.m. - 12:00 Mid.
(3 - 12 years old)

TOY STORY BOOT CAMP

5:00 p.m.

Ten-hut! The Green Army Men are holding a boot camp and your junior cruiser is invited to join in the fun.

ONCE UPON A TIME

10:30 p.m.

Join Beverley the Bookmaker for a magical, musical story time featuring a Disney Princess!



Deck 5 Midship (7-1445) 9:00 a.m. - 1:00 a.m.
(3 - 12 years old)

STITCH'S ADVENTURE SQUAD

12:45 p.m.

Stitch, everyone's favorite alien, is making an appearance to share some of his mischievous games and activities.

PIRATE'S OF THE CARIBBEAN: TIDES OF FORTUNE

7:00 p.m.

Inspired from the Pirates of the Caribbean saga, during this interactive computer game, cruisers in the Oceaneer Lab get a chance to sail the seven seas!



Deck 13 Midship (7-9743) 10:00 a.m. - 1:00 a.m.
(11 - 14 years old)

ANIMATION ANTICS

3:00 p.m.

Learn simple animation techniques and then put your new skills to use by drawing some of your favorite Disney characters.

ANYONE CAN COOK

5:00 p.m.

Create a delicious dish together. Fun for everyone!



Entrance on Deck 4 Forward (7-9417)
11:00 a.m. - 2:00 a.m.
(14 - 17 years old)

THAT'S HILARIOUS

4:45 p.m.

Ever wanted to show off your comedy skills? Then be a part of the cast for the crazy improv show "That's Hilarious" and put on a live show.

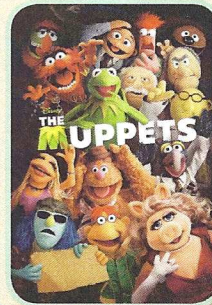
GHOST VOYAGERS

11:15 p.m.

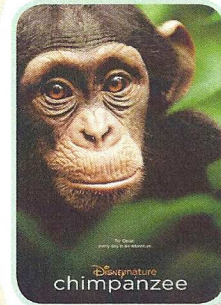
The ship has come upon some mysterious waters and strange things are afoot. Join a team of paranormal experts to help investigate the area and track down any evidence of ghostly beings on the ship.

BUENA VISTA THEATRE

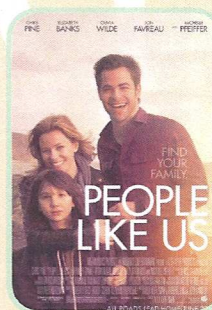
Today's Movies



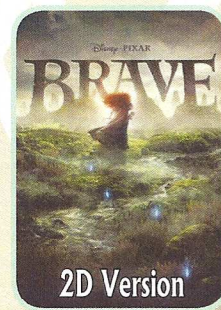
1:45 p.m.
Run Time: 1 hr 43 mins
Rating: PG



3:45 p.m.
Run Time: 1 hr 18 mins
Rating: G



5:30 & 8:15 p.m.
Run Time: 1 hr 55 mins
Rating: PG-13

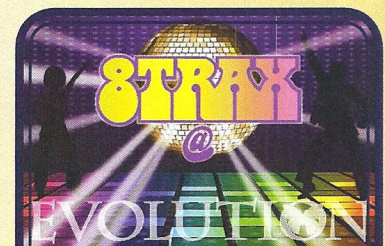


10:45 p.m.
Run Time: 1 hr 31 mins
Rating: PG



Get ready for a jammin', slammin', splish splashin' good time at the new Disney Channel Poolside Jam Fest at Sea! Imagine all of your favorite Disney Channel music stars coming together for an afternoon of contests, great music and hot videos, all under the Caribbean sun!

**Deck Stage,
Deck 11, Midship
1:00 p.m.**



8 TRAX REMIX

Join your Club Host, Max,
& the Cruise Staff
for a 70's disco
fever epidemic.
with an appearance
by the Evolution Dancers.

**Evolution (18+),
Deck 4, Aft
11:00 p.m.**

YOUTH ACTIVITIES OPEN HOUSE

Open House is an opportunity for all to come and participate in a variety of exciting activities and free time in the Oceaneer Club, Lab, Edge and Vibe throughout the cruise. During these times secured programming will still be offered in the other venue for those looking to check their children into care.

MORE TO ENJOY WHILE ONBOARD



BOOK YOUR NEXT CRUISE TODAY AND SAVE

Don't waste time, book your next cruise today. You'll save 10%, receive up to a \$200 onboard credit, and pay a reduced deposit! Tune to Channel 8 on your stateroom TV for details and visit the Future Cruise Sales Desk, Deck 4, Midship.



DISNEY VACATION CLUB® GROUP PREVIEW

Want to learn more about taking magical vacations year after year? Please see a *Disney Vacation Club* representative on Deck 4, Midship, or call 7-2805 from your stateroom phone for more information about our interactive group presentation.



DIAMONDS FOR BREAKFAST - NASSAU SHOPPING

Join your Shopping Guide, Nicholas, for the most important seminar of the cruise. Everyone will receive a FREE sand dollar charm exclusive to the Disney Dream. It's your last chance to pick up your VIP cards and receive your free savings ashore coupon book. 8:30 a.m. - 9:00 a.m., Shopping Desk, Deck 4, Midship. Nicholas will be on the gangway from 9:15 a.m. - 10:00 a.m.

FINE DINING RESERVATIONS

Treat yourself to the ultimate culinary experience at sea. At Remy and Palo the enchantment of sea meets with elegance for a once-in-a-lifetime dining experience. Service/Cover charges will apply, please call 7-9734 for reservations to secure the last available spots.

SURF @ SEA

\$0.75 per minute, or save money by buying blocks of time. \$27.50 for 50 minutes, \$40 for 100 minutes and \$75 for 250 minutes. Wireless information sheets are available at Guest Services, Deck 3, Midship. **Please note: Due to satellite connectivity, onboard internet service will be noticeably slower than you may be accustomed to and may at times be interrupted or unavailable.**

ON DEMAND TV

Watch Disney movies, Hollywood features, ABC Shows, and even captioned content, plus much more "On Demand" for FREE in the comfort of your stateroom! Bookmark your movie and come back to watch it later. Press MENU on your stateroom television remote control, and follow the prompts.



Welcome to Nassau, capital of the Bahamas. It is not too late to book an amazing adventure to Blue Lagoon Island, Atlantis, or you could book a semi-submarine ride. And don't forget, we will be returning to Disney's Castaway Cay in two days, so plan ahead to ensure your first choice of adventure is available. Also, ask our team about the exclusive Getaway Packages, available onboard only.

All Port Adventures meet onboard the ship in Nassau. Please check your tour tickets for meeting times and locations.

SHOPPING

IS YOUR PRINCESS READY?

The Princess Gathering is tomorrow! Dresses, crowns and all accessories of your favorite princesses are all to be discovered at Mickey's Mainsail Princess Zone. Mickey's Mainsail, Deck 3, Forward.

MAUI JIM SUNGLASSES

"A beautiful view of the world." Sunglasses of the future with ground breaking technology. Maui Jim's polarization and two lens technology provides unmatched protection and comfort. Whitecaps, Deck 3, Forward.

FOUR SHIPS DOONEY AND BOURKE BAG ARRIVES!

The new Dooney and Bourke DCL exclusive bag has arrived on the Dream. These bags are of a classic nature and feature the names of all four Disney Cruise Line ships. Three styles in the collection - why not make one yours today? Whitecaps, Deck 3, Forward.

HAVE YOU DISCOVERED THE VISTA GALLERY?

Vista Gallery is where you can immerse yourself in the world of fine art images exclusive to Disney Cruise Line and so much more! Vista Gallery, Deck 4, Midship.

TAG ON THE DREAM!

Since 1860 TAG has been synonymous with time pieces of perfection. From Formula 1 to Carrera, there is a style just waiting for you. Whitecaps, Deck 3, Forward.

TAX AND DUTY FREE SHOPPING!

A great range of jewelry including Michele watches, fragrances and liquor - all at competitive prices. Buy onboard and we will package it for your journey home. Whitecaps, Deck 3, Forward.

Due to port regulations, when the ship is docked, the stores will remain closed.



PAMPER PACKAGE

50 minute full body Swedish massage, foot and ankle massage, Indian scalp massage and 25 minute facial.
75 minute pamper for \$149.

Senses Spa, Deck 11, Forward, Ext 7-1465

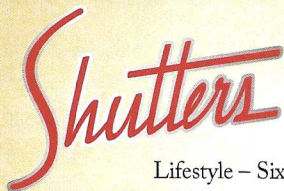
ARLEE'S ESSENCE COLLECTION

"MEANINGFUL, MINIATURE WORKS OF ART"

Select a meaningful, miniature work of art. The designer's Essence Collection is inspired by ancient geometric shapes and the interpretation of these magical symbols. Come see these enchanting pieces!



Whitecaps, Deck 3, Forward



PROFESSIONAL PORTRAITS TONIGHT!

Lifestyle - Six Guests maximum
Beach Portrait - Six Guests maximum

5:15 p.m. - 6:00 p.m.
7:15 p.m. - 8:30 p.m.
9:30 p.m. - 10:30 p.m.

**Please note that photos are available for viewing on our interactive photo kiosks approximately five hours after being taken and are only available for purchase during this cruise.*

DD 149 08 07 2012 ©DISNEY

IMPORTANT INFORMATION

Security Notice

All Guests (including children) who wish to disembark the ship are required to present their Key to the World card at the gangway. A photo ID is also required for those Guests who are 18 years of age or older. Guests under the age of 18 are required to have a Parent, Guardian or other responsible adult sign an authorization form at the time it is given out if they wish to go ashore unaccompanied. Authorization forms are available at the gangways and Guest Services.

Cold and Flu Reminder

Please wash hands frequently and thoroughly, particularly before meals. Contact the Health Center by dialing 7-1923, should anyone in your party become ill.

Corridor Quiet Hours

As a courtesy to all our Guests, please recognize quiet hallway hours from 10:00 p.m. til 8:00 a.m.

Inclement Weather

For the safety of all Guests, outdoor events may be changed due to unforeseen weather conditions.

Environmental Message

With Disney's commitment to the Environment, please refrain from throwing anything over the Ship's side. Thank you!

No Reserved Seats Policy

As a courtesy to all our Guests, we kindly advise that the saving of seats is not permitted in the Walt Disney Theatre, and the saving of the sun loungers is not permitted on Deck 11, 12 and 13. Items left unattended will be returned to lost and found at Guest Services, Deck 3 Midship.

Smoking

For the comfort of our guests the following areas are designated as Smoking areas:

- Deck 13, Forward, port side, by "Currents"
- Deck 12, Aft, port side outdoor area that is accessible through the Meridian Lounge
- Deck 4, Aft, port side from 6:00 p.m. to 6:00 a.m. only (all of Deck 4 is no smoking from 6:00 a.m. to 6:00 p.m.)
- Smoking is permitted on stateroom verandahs. Smoking is prohibited inside all guest staterooms. Guests found smoking in their staterooms will be charged a \$250 stateroom recovery fee.


Walt Disney Theatre


Theatrical performances may use artificial fog, strobe lights, pyrotechnics and other special effects. For the safety of our performers and the comfort of those around you, the use of any photography, video recording devices or any electronic equipment is prohibited.




Verandah Safety

Please do not leave any combustible materials on your balcony when not present in your stateroom for safety reasons.

DD/NB/SD/149/08.05.2012/MJM/©DISNEY

Morning	8:30	8:45	9:00	9:15	9:30	9:45	10:00	10:15	10:30	10:45	11:00	11:15	11:30	11:45	12:00	12:15	12:30	12:45	1:00	1:15	1:30	
FUNNELVISION					Monsters, Inc. (G) FunnelVision				Virtual Tour				Tron Uprising (G) FunnelVision				Jam Fest at Sea					
MOVIES	ABC Pilot Premiere: Nashville Buena Vista Theatre																					
CHARACTER	Princess Gathering Lobby Atrium		Pinocchio Atrium		Peter Pan DK 4, Balcony						Goofy Atrium				Goofy Atrium							
FUN FOR ALL AGES	Diamonds for Breakfast Shopping Desk		Last Minute Shopping Advice with Nicholas Midship Gangway				Jiminy Atrium				Making of the Dream Evolution				 Deck Stage, Deck 11, Midship							
	Youth Activities Open House Edge				Youth Activities Open House Vibe								Animation: Persistence of Vision Evolution									
ADULTS	Friends of Bill W. Outlook				Wake Up & Stretch Senses Fitness Center																	
VIBE					Youth Activities Open House								Anyone Can Cook									
EDGE	Youth Activities Open House								Sports Simulator				Mini Golf									
OCEANEER LAB	Magic Playfloor		Piston Cup Challenge						Get the Hook		Lunch		Stitch's Adventure Squad									
OCEANEER CLUB	Youth Activities Open House "Puzzle Playtime" 9:45 a.m. - 10:15 a.m.								Big Top Fun Fest		Lunch		Cruisin' with Crush		Memory Wall		So You Want To Be A Pirate?					

Afternoon	1:45	2:00	2:15	2:30	2:45	3:00	3:15	3:30	3:45	4:00	4:15	4:30	4:45	5:00	5:15	5:30	5:45	6:00	6:15	6:30	6:45	
FUNNELVISION					WALL-E (G) FunnelVision				Ratatouille (G) FunnelVision													
MOVIES	The Muppets (PG) Buena Vista Theatre				Disney Nature: Chimpanzee (G) Buena Vista Theatre				People Like Us (PG-13) Buena Vista Theatre				>7:25 p.m.									
CHARACTER	Disney Friends Atrium		Goofy DK4, Balcony		Minnie DK4, Balcony		Ariel Preludes		Tinker Bell Atrium		Daisy Atrium											
FUN FOR ALL AGES	Disney Trivia D Lounge		Family Crafts: Scrapbooking D Lounge				Disney Vacation Club Presentation Evolution				Bingo Pre Sales		Goodie Giveaway BINGO D Lounge		 Rated PG		The Dreamers LIVE Lobby Atrium		Family Superstar Karaoke D Lounge			
	Animation: Creating a Character Evolution		Art of The Theme Show Tour Meet at Meridian				Martini Tasting (21+) Meridian (Nom Fee)				18*21 Mini Golf Goofy's Sports Deck											
ADULTS	Closest to the Pin Competition Sports Simulator		Acupuncture for Pain Control Senses Spa & Salon				Secrets to a Flatter Stomach Senses Spa & Salon				Mixology (21+) Skyline (Nom Fee)											
VIBE					Sports Simulator				DJ Training				That's Hilarious		Sports Deck		Youth Activities Open House					
EDGE					Animation Antics				Sports Deck				Anyone Can Cook									
OCEANEER LAB	Open "Mike" Night		Youth Activities Open House "Super Sloppy Science" 2:45 p.m. - 3:30 p.m.				Magic		Magic Playfloor		Dinner		Super Sloppy Science									
OCEANEER CLUB	So You Want To Be A Pirate?		Aloha Luau				Tinker Bell's Talent Show		Toy Story Boot Camp		Dinner		Little Einsteins									

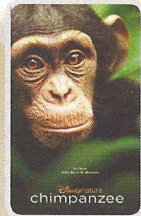
Evening	7:00	7:15	7:30	7:45	8:00	8:15	8:30	8:45	9:00	9:15	9:30	9:45	10:00	10:15	10:30	10:45	11:00	11:15	11:30	11:45	12:00	
FUNNELVISION	Up (G) FunnelVision				A Bug's Life (G) FunnelVision				Remember the Titans (PG) FunnelVision													
MOVIES	People Like Us (PG-13) Buena Vista Theatre				Brave (PG) 2D Version Buena Vista Theatre				>12:16 a.m.													
CHARACTER	Mickey Atrium		Tinker Bell Atrium		Mickey Atrium		Pinocchio DK 4, Balcony		Snow White DK 4, Balcony		Tiana Preludes		Tinker Bell Atrium		Pluto Atrium		Cinderella Preludes					
FUN FOR ALL AGES	Family Dream Quest D Lounge		 Rated PG				Disney DISCO D Lounge		 D Lounge		 D Lounge											
	Live Music with The Dreamers Lobby Atrium		Family Superstar Karaoke D Lounge				Family Dream Quest D Lounge		Live Piano with Tom Scott Lobby Atrium													
ADULTS	Name That 70's Tune 687 Pub				Whiskey Tasting (21+) Meridian (Pre Book/Nom Fee)				Dream Quest Evolution		80's Music Challenge Evolution		8 Trax with Guest DJ Pete & the Evolution Dancers Evolution									
VIBE	Open House				Pump It Up/Smoothie Hour								Ghost Voyagers									
EDGE	That's Hilarious										Gender Wars		Dodgeball									
OCEANEER LAB	POTC: Tides of Fortune		Piston Cup Challenge		Super Sloppy Science				POTC: Tides of Fortune													
OCEANEER CLUB	Magic Playfloor		Camp Rocking Out				Magic Playfloor		Once Upon a Time		Magic Playfloor											

Symbol for activities that will be repeated during the cruise
 FOLD
 Fold along the dotted lines and take me with you so you don't miss any of the fun!
 FOLD
 THE SPOTLIGHT SERIES
 SOLVE IT! SERIES
 JUMP UP! SERIES
 CREATE & INVENT SERIES
 CLUBHOUSE SERIES
 STORYBOOK SERIES

BUENA VISTA THEATRE



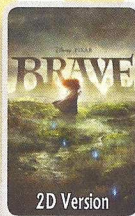
1:45 p.m.
Run Time:
1 hr 43 mins
Rating: PG



3:45 p.m.
Run Time:
1 hr 18 mins
Rating: G



5:30 & 8:15 p.m.
Run Time:
1 hr 55 mins
Rating: PG-13



10:45 p.m.
Run Time:
1 hr 31 mins
Rating: PG

Character Appearances

PRINCESS GATHERING
Lobby Atrium - 9:00 a.m.

MINNIE MOUSE
Deck 4, Balcony
9:15 a.m. & 4:45 p.m.

PINOCCHIO
Lobby Atrium - 9:30 a.m.
Deck 4, Balcony
8:00 p.m. & 10:00 p.m.

JIMINY CRICKET
Lobby Atrium - 10:00 a.m.
Deck 4, Balcony
8:00 & 10:00 p.m.

PETER PAN
Deck 4, Balcony - 9:45 a.m.

PLUTO
Lobby Atrium
12:30 p.m. & 10:15 p.m.

GOOFY
Lobby Atrium
12:30 p.m. & 9:45 p.m.
Deck 4, Balcony - 2:45 p.m.

MEET & GREET
Lobby Atrium - 2:30 p.m.

CHIP & DALE
Lobby Atrium - 5:15 p.m.

TINKER BELL
Lobby Atrium - 5:15 p.m.,
7:30 p.m. & 9:45 p.m.

MICKEY MOUSE
Lobby Atrium - 7:15 p.m.

PRINCESS TIANA
Preludes - 9:45 p.m.

ARIEL
Preludes
5:00 p.m., 7:30 p.m.

DAISY DUCK
Lobby Atrium - 5:00 p.m.

PRINCESS AURORA
Preludes - 5:30 p.m.

BELLE
Preludes - 8:00 p.m.

SNOW WHITE & DOPEY
Deck 4, Balcony
7:30 p.m. & 9:30 p.m.

CINDERELLA
Preludes - 10:15 p.m.



For details of daily Disney character appearances, refer to the character line in your Navigator Grid or the digital character board in the Lobby Atrium.

YOUTH ACTIVITIES THEMED EXPERIENCES

CLUBHOUSE SERIES
focuses on movement and features content which appeals to younger children.

STORYBOOK SERIES
is designed with a strong connection to the Disney classic stories.

JUMP UP! SERIES
includes large ground games & movement-oriented activities.

CREATE & INVENT SERIES
will have a tactile focus allowing children to create and admire their work.

IN THE SPOTLIGHT SERIES
focuses on children's stage presence with lots of activities and enthusiasm.

SOLVE IT! SERIES
are less active, but will challenge children with problem/solutions based activities.

OPEN HOUSE
activities for families, adults and children of all ages to enjoy together.

SHIP DIRECTORY

YOUTH ACTIVITIES

DISNEY'S OCEANEER CLUB	DECK 5, MID	9:00 A.M. - 12:00 MID
DISNEY'S OCEANEER LAB	DECK 5, MID	9:00 A.M. - 1:00 A.M.
EDGE	DECK 13, MID	10:00 A.M. - 1:00 A.M.
VIBE	DECK 4, FWD	11:00 A.M. - 2:00 A.M.
IT'S A SMALL WORLD NURSERY	DECK 5, MID	9:00 A.M. - 1:00 A.M.

RECREATION

AQUADUCK	DECK 12, MID	9:00 A.M. - 12:00 MID.
BASKETBALL COURT	DECK 13, AFT	12:00 A.M. - 6:00 P.M.
DONALD'S POOL	DECK 11, MID	7:00 A.M. - 12:00 MID.
GOLF/SPORTS SIMULATORS	DECK 13, AFT	11:00 A.M. - 6:00 P.M.
GOOFY & MAX'S MINI GOLF	DECK 13, AFT	8:00 A.M. - 10:00 P.M.
MICKEY'S POOL	DECK 11, MID	7:00 A.M. - 12:00 MID.
MICKEY'S SLIDE	DECK 11, MID	9:00 A.M. - 7:00 P.M.
MIDSHIP DETECTIVE AGENCY	DECK 5, MID	8:00 A.M. - 11:00 P.M.
NEMO'S REEF	DECK 11, MID	9:00 A.M. - 7:00 P.M.
PORT ADVENTURES DESK	DECK 5, MID	8:00 A.M. - 11:00 P.M. 6:00 P.M. - 8:30 P.M.
QUIET COVE POOL	DECK 11, FWD	6:00 A.M. - 12:00 MID.
SENSES FITNESS CENTER	DECK 11, FWD	6:00 A.M. - 10:00 P.M.

GENERAL INFORMATION

ARR-CADE	DECK 11, AFT	24 HOURS
DISNEY VACATION CLUB	DECK 4, MID	9:00 A.M. - 11:00 A.M. 5:30 P.M. - 10:00 P.M.
FUTURE CRUISE SALES DESK	DECK 4, MID	9:00 A.M. - 10:00 A.M. 4:00 P.M. - 6:00 P.M. 7:30 P.M. - 10:00 P.M.
GUEST SERVICES	DECK 3, MID	24 HOURS
MEDICAL HEALTH CENTER	DECK 1, FWD	9:30 A.M. - 11:00 A.M. 4:30 P.M. - 7:00 P.M.
PORT & SHOPPING DESK	DECK 4, MID	8:00 A.M. - 9:00 A.M.
PRELUDES	DECK 3, FWD	5:45 P.M. - 6:30 P.M. 8:00 P.M. - 8:45 P.M.
SENSES SPA AND SALON	DECK 11, FWD	8:00 A.M. - 10:00 P.M.
SHUTTERS PHOTO GALLERY	DECK 4, MID	5:00 P.M. - 11:00 P.M.

SHOPPING

MICKEY'S MAINSAIL	DECK 3, FWD	7:00 P.M. - 11:00 P.M.
SEA TREASURES	DECK 3, FWD	7:00 P.M. - 11:00 P.M.
VISTA GALLERY	DECK 4, MID	7:00 P.M. - 11:00 P.M.
WHITECAPS	DECK 3, FWD	7:00 P.M. - 11:00 P.M.
WHOZITS & WHATZITS	DECK 11, MID	7:00 P.M. - 10:00 P.M.

All Ashore: Approx. 9:45 a.m.
All Aboard: 6:15 p.m.

SHIP'S AGENT IN NASSAU

Nassau, Bahamas
R.H. Curry & Company, 303 Shirley St.,
P.O. Box N8168 Nassau, Bahamas
242-323-8425 or 242-357-9218

IMPORTANT NUMBERS

Fire/Security: 7-3001
Medical Emergency: 7-3000
Health Center: 7-1923

DINNER MENU

Animator's Palate: Pacific Rim Cuisine
Enchanted Garden: Continental Market
Royal Palace: French Dinner
Dining Times: 5:45 p.m. & 8:15 p.m.

DRINK OF THE DAY

Yellow Bird (Alcoholic)
Parrot Song (Non Alcoholic)

WEATHER FORECAST

Tuesday: Partly Sunny
High: 82°F/28°C
Wednesday: Partly Sunny
High: 84°F/29°C

Evening Attire: Cruise Casual

DINING & LOUNGES

BREAKFAST

CABANAS CONTINENTAL (PORT SIDE)	DECK 11, AFT	7:00 A.M. - 7:30 A.M.
CABANAS	DECK 11, AFT	7:30 A.M. - 10:30 A.M.
ENCHANTED GARDEN	DECK 2, MID	8:00 A.M. - 10:45 A.M.
ROYAL PALACE	DECK 3, MID	8:00 A.M. - 9:30 A.M.

LUNCH

CABANAS	DECK 11, AFT	12:00 P.M. - 2:00 P.M.
FILLMORE'S FAVORITES	DECK 11, MID	11:00 A.M. - 6:00 P.M.
LUIGI'S PIZZA	DECK 11, MID	11:00 A.M. - 6:00 P.M.
ROYAL PALACE	DECK 3, MID	12:00 P.M. - 1:30 P.M.
TOW MATER'S GRILL	DECK 11, MID	11:00 A.M. - 6:00 P.M.

DINNER

ANIMATOR'S PALATE	DECK 3, AFT	5:45 P.M. & 8:15 P.M.
ENCHANTED GARDEN	DECK 2, MID	5:45 P.M. & 8:15 P.M.
ROYAL PALACE	DECK 3, MID	5:45 P.M. & 8:15 P.M.
CABANAS TABLE SERVICE	DECK 11, AFT	6:30 P.M. - 8:30 P.M.
TOW MATER'S GRILL	DECK 11, MID	6:00 P.M. - 11:00 P.M.
PALO & REMY (18+)	DECK 12, AFT	6:00 P.M. - 9:00 P.M.

(RESERVATION REQUIRED & COVER CHARGE APPLICABLE. DIAL #7-9734)

LATE NIGHT SNACKS

LUIGI'S PIZZA	DECK 11, MID	9:30 P.M. - 12:30 A.M.
THE DISTRICT	DECK 4, AFT	10:45 P.M. - 11:45 P.M.

ADDED FEATURES

BEVERAGE STATION	DECK 11, AFT	24 HOURS
EYE SCREAM	DECK 11, MID	11:00 A.M. - 11:00 P.M.
ROOM SERVICE	DIAL 0	24 HOURS

ENTERTAINMENT - LOUNGES - BARS

Adults must be 21 and older to consume alcoholic beverages.

687 PUB	DECK 4, AFT	5:00 P.M. - 9:00 P.M.
687 PUB (18+)	DECK 4, AFT	9:00 P.M. - 12:30 A.M.
BON VOYAGE	DECK 3, MID	9:00 A.M. - 11:00 P.M.
COVE BAR (18+)	DECK 11, FWD	10:30 A.M. - 11:00 P.M.
COVE CAFE (18+)	DECK 11, FWD	7:00 A.M. - 6:00 P.M.
COVE CAFE WINE BAR (18+)	DECK 11, FWD	6:00 P.M. - 12:00 MID.
CURRENTS (18+)	DECK 13, FWD	11:00 A.M. - 12:00 A.M.
D LOUNGE	DECK 4, MID	SHOWTIMES
DISTRICT LOUNGE	DECK 4, AFT	4:00 P.M. - 9:00 P.M.
DISTRICT LOUNGE (18+)	DECK 4, AFT	9:00 P.M. - 12:00 MID.
EVOLUTION (18+)	DECK 4, AFT	10:00 P.M. - 2:00 A.M.
FROZONE TREATS	DECK 11, MID	11:00 A.M. - 11:00 P.M.
MERIDIAN (18+)	DECK 12, AFT	5:00 P.M. - 12:30 A.M.
PINK (18+)	DECK 4, AFT	5:00 P.M. - 12:30 A.M.
OUTLOOK	DECK 14, MID	SUNSET TIME
SKYLINE (18+)	DECK 4, AFT	5:00 P.M. - 1:00 A.M.
VISTA CAFE	DECK 4, MID	7:30 A.M. - 11:00 P.M.
WAVES	DECK 12, AFT	12:00 P.M. - 7:00 P.M.

Consumers who order raw or partially cooked, ready-to-eat food of animal origin, are hereby informed that the food is not sufficiently cooked to ensure its safety.



IMPORTANT INFORMATION

Please check your Port Adventure tour tickets for meeting times and locations. Visit the Port Adventures Deck 5, Midship, for any questions.