

PERSONAL NAVIGATOR

MONDAY, SEPTEMBER 3, 2012

Sunrise: 6:52 a.m. Sunset: 7:25 p.m.

Evening Attire: Optional Dress Up

All Ashore: 9:30 a.m.

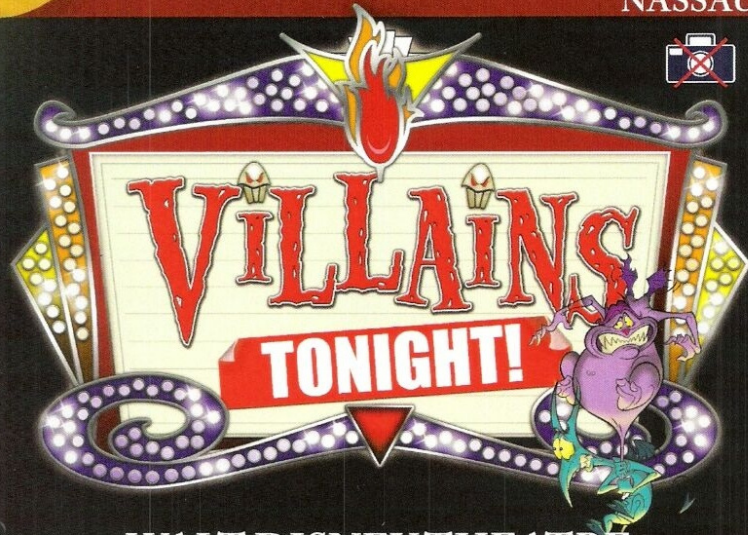
All Aboard: 6:15 p.m.

Gangway: Deck 1, Midship, & Deck 1, Forward


Monday: Partly Cloudy High: 81°F/27°C

Tuesday: Partly Cloudy High: 81°F/27°C

NASSAU



WALT DISNEY THEATRE
DECKS 3 & 4, FORWARD
6:15 P.M. & 8:30 P.M.

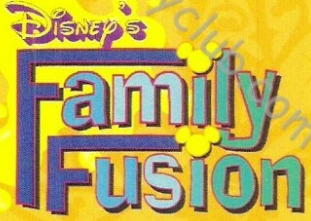
 Assistance available at the entrance to the Walt Disney Theatre 30 minutes prior to show time.

LABOR DAY

Nassau Port Information

While you will find many great experiences in Nassau, there have been reports of increased crime, including assaults and robberies involving tourists in the area. As in any large city, you'll want to take some basic precautions to make the most of your time ashore.

- Be aware of your surroundings at all times, just as you would in your normal daily activities.
- Avoid short cuts, narrow alleys or poorly lit streets. We recommend that guests only visit the downtown shopping areas and other tourist locations.
- Leave valuables in your room safe and avoid carrying large amounts of cash. Exercise caution when using ATMs. Cameras and handbags should be carried out of sight and secured to your person with a strap.
- Leave passports, air transportation tickets and other travel documents in your room safe. When going ashore, each adult is required to carry a Driver's license, copy of passport or other government-issued photo ID.
- If traveling by taxi, use only licensed taxi operators.
- In general, use the same level of precaution you would use in any tourist destination.
- Most crimes are easier to commit in dark unlit areas. You should stay out of these types of areas and consider returning to the ship before nightfall. If you stay out at night, please be extra vigilant about your personal safety.



Bring the entire family and test your Disney knowledge in this interactive, family game show.

10:15 p.m.
D Lounge,
Deck 4, Midship

Don't Miss:

Making of the Dream

Evolution, Deck 4, Aft - 11:30 a.m. (Families)

Evolution (18+), Deck 4, Aft - 2:00 p.m. (Adults)

Explore the origins of Disney Cruise Line - and the latest and greatest innovations conjured especially for the Disney Dream ships in this fascinating and entertaining behind-the-scenes program.

Disney Animation: Creating a Character

D Lounge, Deck 4, Midship - 2:00 p.m.

Go behind the scenes at Walt Disney Animation Studios and learn the principles that make animation work, and try your hand at creating your own easy animation demonstration in this fun and fascinating enrichment program.

Dream Quest

Evolution (18+), Deck 4, Aft - 10:00 p.m.

Enjoy the adult version of the wildest and wackiest scavenger team event on the seven seas!

Club New Year's Eve

D Lounge, Deck 4, Midship - 10:45 p.m.

"The party don't start till you walk in" - to Club New Year's Eve! Bring your family and help us count down to a brand new year!



Welcome to Nassau, capital of the Bahamas. It is not too late to book an amazing adventure to Blue Lagoon Island, Atlantis, or you could book a semi-submarine ride.

All Port Adventures meet onboard the ship in Nassau. Please check your tour tickets for meeting times and locations.

DINNER MENU

Animator's Palate: Pacific Rim Cuisine
Enchanted Garden: Continental Market
Royal Palace: French Dinner

DRINK OF THE DAY

Yellow Bird (Alcoholic)
Parrot Song (Non Alcoholic)

IMPORTANT NUMBERS

Fire/Security: 7-3001
Medical Emergency: 7-3000
Health Center: 7-1923

FAMILY ACTIVITY HIGHLIGHTS

MAKING OF THE DREAM

Evolution, Deck 4, Aft - 11:30 a.m. (Families)

Evolution (18+), Deck 4, Aft - 2:00 p.m. (Adults)

Explore the origins of Disney Cruise Line - and the latest and greatest innovations conjured especially for the Disney Dream ships in this fascinating and entertaining behind-the-scenes program.

FAMILY CRAFTS - SCRAPBOOKING

D Lounge, Deck 4, Midship - 1:00 p.m.

Start creating and collecting your cruise memories at this scrapbooking session. Your Cruise Staff will be on hand with a special gift for all attendees.

DISNEY VACATION CLUB® GROUP PRESENTATION

Evolution, Deck 4, Aft - 3:00 p.m.

Want to learn more about taking magical vacations year after year? Stop by our interactive group presentation to find out more information from a Disney Vacation Club representative.

FAMILY DANCE PARTY

Evolution, Deck 4, Aft - 7:30 p.m.

Grab your dancing shoes and hit the dance floor as DJ Kurtis spins the tunes.

FAMILY SUPERSTAR KARAOKE

D Lounge, Deck 4, Midship - 8:45 & 11:15 p.m.

Calling all singing superstars! Join your Cruise Staff in D Lounge and sing along to your favorite song - fun for everyone.



CLUB NEW YEAR'S EVE

D Lounge, Deck 4, Midship - 10:45 p.m.

"The party don't start till you walk in" - to Club New Year's Eve! Bring your family and help us count down to a brand new year!

www.castawayclub.com

ADULT ACTIVITY HIGHLIGHTS

SENSES SPA SEMINARS

Body Sculpt Boot Camp (Fee Applies) - Basketball Court, 7:30 a.m.

Seminar: Acupuncture for Well Being - Senses Spa & Salon, 9:00 a.m.

Fitness Frenzy - Senses Fitness Center, 10:00 a.m.

Seminar: Secrets to a Flatter Stomach - Senses Spa & Salon, 3:00 p.m.

Mother & Daughter Facial - Magic Conference Room, 4:00 p.m.

Fab Abs - Senses Fitness Center, 5:00 p.m.



TASTING SEMINARS

Mixology - Skyline, 4:00 p.m.

Martini Tasting - Meridian, 4:00 p.m.

Please make reservations for tastings at Guest Services for a nominal fee. Tasting Seminars are only for Guest's 21 and Older.



MINI GOLF CHALLENGE

Goofy's Sports Deck, Deck 13, Aft, 5:00 p.m.

MIXER

Evolution, Deck 4, Aft, 10:00 p.m.

ART OF THE THEME SHOW TOUR

Meet at Meridian, Deck 12, Aft - 2:45 p.m.

A walking tour that highlights the ship's design of Disney culture, themeing and artistry.



ESPN MONDAY NIGHT FOOTBALL CALL IT!

687 Pub, Deck 4, Aft - 5:00 p.m.

Test your Monday Night Football knowledge as you watch some of the greatest highlights of football history and then "make the call" as to what happens next!

NAME THAT 70'S TUNE

687 Pub, Deck 4, Aft - 7:30 p.m.

"At first I was afraid... I was petrified" ... know this tune? If so, join your Club Host, Max, as he tests your knowledge of the 70's classics.



8TRAX (70'S REMIX)

FOLLOWED BY GUEST DJ RYAN MARX

Evolution, Deck 4, Aft - 11:15 p.m.

Join your Club Host, Max, & the Cruise Staff for a 70's disco fever epidemic. With a special appearance by the Evolution Dancers.



\$5,000 MEGA JACKPOT BINGO

**D Lounge,
Deck 4, Midship
Card Sales - 4:00 p.m.
Game Starts - 4:15 p.m.**

Join your Cruise Staff for four cash prize games. Cover your card in 46 numbers or less, and \$5,000 could be yours. If not, we continue to play for the highest cash prize of the session!

SENSES SPA BINGO

**D Lounge, Deck 4, Midship
Card Sales - 7:15 p.m.
Game Starts - 7:30 p.m.**

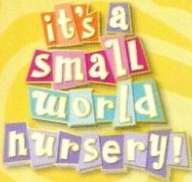
Four cash prizes up for grabs, plus great spa prizes to be won, including facials and massages courtesy of the Senses Spa & Salon. Also, the snowball jackpot continues to grow and could be won today!



YOUTH ACTIVITIES HIGHLIGHTS

DINE & PLAY

A convenience for families dining at 8:15 p.m., our Youth Activities Counselors will be available at 9:15 p.m. at the entrance of Royal Palace, Enchanted Garden and Animator's Palate dining rooms to bring registered children to join the fun in the Youth Activity areas.



Deck 5 Midship (7-5864) 9:00 a.m. - 1:00 a.m.

OPEN HOUSE

8:00 - 9:00 a.m.

Your chance to see our toddler space, It's A Small World Nursery.



Deck 5 Midship (7-1440) 10:30 a.m. - 12:00 Mid.
(3 - 12 years old)

BIG TOP FUN FEST

11:30 a.m.

It's the greatest show on Earth. Come re-discover the circus Disney style with clowns, jugglers and classic Disney cartoons.

TOY STORY BOOT CAMP

6:15 p.m.

Ten-hut! The Green Army Men are holding a boot camp and your junior cruiser is invited to join in the fun.



Deck 5 Midship (7-1445) 9:00 a.m. - 1:00 a.m.
(3 - 12 years old)

PISTON CUP CHALLENGE

11:15 a.m.

It's Dinoco time and you're part of the pit crew! Design your own race car and see if you've got what it takes to end up in the Winner's Circle!

SUPER SLOPPY SCIENCE

8:30 p.m.

Join Professor Make-O-Mess in some of the most extreme experiments you will ever see in the world of Super Sloppy Science!



Deck 13 Midship (7-9743) 10:00 a.m. - 1:00 a.m.
(11 - 14 years old)

ANIMATION

3:00 p.m.

Learn simple animation techniques and then put your new skills to use by drawing some of your favorite Disney characters.

ANYONE CAN COOK

7:30 p.m.

Create a delicious dish together. Fun for everyone!



Entrance on Deck 4 Forward (7-9417)
11:00 a.m. - 2:00 a.m.
(14 - 17 years old)

MAGIC SHOW

10:30 p.m.

Put some magic and wonder in your Dream vacation. Say, "Abracadabra!" and fun is sure to appear!

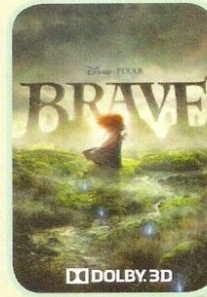
GHOST VOYAGERS

11:30 p.m.

The ship has come upon some mysterious waters and strange things are afoot. Join a team of paranormal experts to help investigate the area and track down any evidence of ghostly beings on the ship.

BUENA VISTA THEATRE

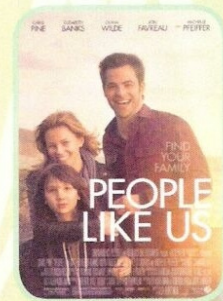
Today's Movies



12:30 p.m.,
5:30 p.m. & 8:30 p.m.
Run Time: 1 hr 31 mins
Rating: PG



2:30 p.m. - **OC**
Run Time: 2 hr 26 mins
Rating: PG-13



10:30 p.m.
Run Time: 1 hr 55 mins
Rating: PG-13



Get ready for a jammin', slammin', splish splashin' good time at the new Disney Channel Poolside Jam Fest at Sea! Imagine all of your favorite Disney Channel music stars coming together for an afternoon of contests, great music and hot videos, all under the Caribbean sun!

**Deck Stage,
Deck 11, Midship
1:00 p.m.**



GAME SHOW

It's time to play everyone's favorite couples game show - Match Your Mate!

**Evolution (18+),
Deck 4, Aft
10:30 p.m.**

YOUTH ACTIVITIES OPEN HOUSE

Open House is an opportunity for all to come and participate in a variety of exciting activities and free time in the Oceaneer Club, Lab, Edge and Vibe throughout the cruise. During these times secured programming will still be offered in the other venue for those looking to check their children into care.

MORE TO ENJOY WHILE ONBOARD



BOOK YOUR NEXT CRUISE TODAY AND SAVE

Don't waste time, book your next cruise today. You'll save 10%, receive up to a \$200 onboard credit, and pay a reduced deposit! Tune to Channel 8 on your stateroom TV for details and visit the Future Cruise Sales Desk, Deck 4, Midship.



DISNEY VACATION CLUB® GROUP PREVIEW

Want to learn more about taking magical vacations year after year? Please see a *Disney Vacation Club* representative on Deck 4, Midship, or call 7-2805 from your stateroom phone for more information about our interactive group presentation.



NASSAU SHOPPING HIGHLIGHTS

Join Nicholas at his Shopping desk this morning for your last chance to get very important shopping information for Nassau. Learn the savvy buyers tricks, and the best stores to shop at in town! Learn how to collect a FREE collectors charm bracelet in Nassau! This is your last chance to pick up Coupons, very important VIP cards, and your Savings Ashore Booklet! Nicholas will be at his desk from 8:30 a.m. - 10:00 a.m. on Deck 4, Midship."

ONBOARD AIRLINE CHECK IN

If you would like to have your boarding passes printed for you onboard and have your luggage taken to the airport for you, today at 8:00 p.m. is the last chance to enroll. If you have Disney Cruise Line airport transfer to Orlando International Airport and fly with one of the participating airlines. Please stop at Guest Services Desk, Deck 3, Midship.

FINE DINING RESERVATIONS

Treat yourself to the ultimate culinary experience at sea. At Remy and Palo the enchantment of sea meets with elegance for a once-in-a-lifetime dining experience. Service/Cover charges will apply, please call 7-9734 for reservations to secure the last available spots.

SURF @ SEA

\$0.75 per minute, or save money by buying blocks of time. \$27.50 for 50 minutes, \$40 for 100 minutes and \$75 for 250 minutes. Wireless information sheets are available at Guest Services, Deck 3, Midship. **Please note: Due to satellite connectivity, onboard internet service will be noticeably slower than you may be accustomed to and may at times be interrupted or unavailable.**



Welcome to Nassau, capital of the Bahamas. It is not too late to book an amazing adventure to Blue Lagoon Island, Atlantis, or you could book a semi-submarine ride. And don't forget, we will be arriving to Disney's Castaway Cay in two days, so plan ahead to ensure your first choice of adventure is available. Also, ask our team about the exclusive Getaway Packages, available onboard only.

All Port Adventures meet onboard the ship in Nassau. Please check your tour tickets for meeting times and locations.

SHOPPING

HAVE YOU SEEN MAUI JIM?

High fashion meets ground-breaking technology in these Maui Jim sunglasses made to be both stylish and functional. See the world the way it was meant to be seen with Maui Jim's polarized, two lens technology eyewear which provides unmatched protection and comfort. Whitecaps, Deck 3, Forward.

TAG HEUER TIMEPIECES

Watches that stand the test of time! Over 150 years of excellence in keeping time, proudly worn all over the world, and available here on the Disney Dream. Take a moment to view the entire TAG Heuer collection we have onboard. Whitecaps, Deck 3, Forward.

NIKE APPAREL DEAL

Golfers, it's time to 'Tee-Up!' Polos, shorts, and caps available. Buy one piece of any Nike apparel and get another Nike piece 20% off. You are sure to hit a hole-in-one with this amazing offer! Sea Treasures, Deck 3, Forward.

JUST ARRIVED TO THE DREAM!

Come discover the island-inspired fashions of Tori Richards. With this collection your entire family can take the magic, wonder, and dream of tropical life and relaxation anywhere you go. Experience the island fantasy at Sea Treasures, Deck 3, Forward.

DISCOVER THE VISTA GALLERY SILENT AUCTION

Come place your bid on exquisite pieces of some of your favorite Disney characters! Newly arrived auction pieces will be on display, bidding closes at 6 pm on the final night of the cruise. Also available, come see Disney/Pixar movie artwork and Dream/Disney Cruise Line exclusive artwork. Discounted shipping available on two or more pieces of art. Vista Gallery, Deck 4, Midship.

Due to port regulations, when the ship is docked, the stores will remain closed.



SENSES
SPA & SALON

PAMPER PACKAGE

50 minute full body Swedish massage, foot and ankle massage, Indian scalp massage and 25 minute facial.
75 minute pamper for \$149.

Senses Spa, Deck 11, Forward, Ext 7-1465.

DOONEY & BOURKE ON THE DREAM

Disney Cruise Line has inspired these quality bags once again. This collection features a nautical blue and white theme and is adorned with the Disney Cruise Line wave logo. Our four ships collection features the names of the Magic, Wonder, Dream, and Fantasy, and even everyone's best pal, Mickey Mouse!

There are different shapes, sizes, and styles to fit your needs. Come find the bag that is right for you.

WHITECAPS
Deck 3, Forward

Shutters

PROFESSIONAL PORTRAITS TONIGHT!

Lifestyle - Six Guests maximum
Donald Statue - Groups accommodated

5:15 p.m. - 6:00 p.m.
7:15 p.m. - 8:30 p.m.
9:30 p.m. - 10:30 p.m.

*Please note that photos are available for viewing on our interactive photo kiosks approximately five hours after being taken and are only available for purchase during this cruise.

IMPORTANT INFORMATION

Security Notice

All Guests (including children) who wish to disembark the ship are required to present their Key to the World card at the gangway. A photo ID is also required for those Guests who are 18 years of age or older. Guests under the age of 18 are required to have a Parent, Guardian or other responsible adult sign an authorization form at the time it is given out if they wish to go ashore unaccompanied. Authorization forms are available at the gangways and Guest Services.

Cold and Flu Reminder

Please wash hands frequently and thoroughly, particularly before meals. Contact the Health Center by dialing 7-1923, should anyone in your party become ill.

Corridor Quiet Hours

As a courtesy to all our Guests, please recognize quiet hallway hours from 10:00 p.m. til 8:00 a.m.

Inclement Weather

For the safety of all Guests, outdoor events may be changed due to unforeseen weather conditions.

Environmental Message

With Disney's commitment to the Environment, please refrain from throwing anything over the Ship's side. Thank you!

No Reserved Seats Policy

As a courtesy to all our Guests, we kindly advise that the saving of seats is not permitted in the Walt Disney Theatre, and the saving of the sun loungers is not permitted on Deck 11, 12 and 13. Items left unattended will be returned to lost and found at Guest Services, Deck 3 Midship.

Smoking

For the comfort of our guests the following areas are designated as Smoking areas:

- Deck 13, Forward, port side, by "Currents"
- Deck 12, Aft, port side outdoor area that is accessible through the Meridian Lounge
- Deck 4, Aft, port side from 6:00 p.m. to 6:00 a.m. only (all of Deck 4 is no smoking from 6:00 a.m. to 6:00 p.m.)

- Smoking is permitted on stateroom verandahs. Smoking is prohibited inside all guest staterooms. Guests found smoking in their staterooms will be charged a \$250 stateroom recovery fee.

Walt Disney Theatre

Theatrical performances may use artificial fog, strobe lights, pyrotechnics and other special effects. For the safety of our performers and the comfort of those around you, the use of any photography, video recording devices or any electronic equipment is prohibited.

Verandah Safety

Please do not leave any combustible materials on your balcony when not present in your stateroom for safety reasons.

DD/CL/4D/155/09.02.2012/RB/©DISNEY

Symbol for activities that will be repeated during the cruise



FOLD

Fold along the dotted lines and take me with you so you don't miss any of the fun!

FOLD

IN THE SPOTLIGHT SERIES

JUMP UP! SERIES

CREATE & INVENT SERIES

OPEN HOUSE

CLUBHOUSE SERIES

STORYBOOK SERIES

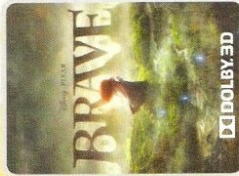
Morning	8:30	8:45	9:00	9:15	9:30	9:45	10:00	10:15	10:30	10:45	11:00	11:15	11:30	11:45	12:00	12:15	12:30	12:45	1:00	1:15	1:30	
FUNNELVISION					Snow White (G) FunnelVision				VirtualTour FunnelVision				Tron Uprising (G) FunnelVision				Jam Fest at Sea					
MOVIES	Brave (PG) Buena Vista Theatre >2:01 p.m.																					
CHARACTER	Princess Gathering Lobby Atrium				Minnie Dk 4, Balcony				Daisy Dk 4, Balcony				Minnie Dk 4, Balcony				Mickey Atrium					
FUN FOR ALL AGES	Last Minute Shopping Advice with Nicholas Shopping Desk, Deck 4, Midship								Making of the Dream Evolution								Disney Cruise Line Trivia D Lounge				Jam Fest at Sea Deck Stage, Deck 11, Midship	
	Youth Activities Open House Edge				Youth Activities Open House Vibe								Family Crafts: Scrapbooking D Lounge									
ADULTS	Friends of Bill W. Outlook		Acupuncture for Well Being Senses Spa & Salon				Fitness Frenzy Senses Fitness Center															
	Wake Up & Stretch Senses Fitness Center																					
VIBE	Youth Activities Open House								Hangin' in Vibe													
EDGE	Youth Activities Open House								Sports Simulator								Gender Wars					
OCEANEER LAB	Animation Antics								Piston Cup				Lunch				Stitch's Adventure Squad					
OCEANEER CLUB	Youth Activities Open House "Puzzle Playtime" 9:45 a.m. - 10:15 a.m.								Adventures to Neverland				Memory Wall		Big Top Fun Fest				Lunch		Magic Playfloor	

Afternoon	1:45	2:00	2:15	2:30	2:45	3:00	3:15	3:30	3:45	4:00	4:15	4:30	4:45	5:00	5:15	5:30	5:45	6:00	6:15	6:30	6:45	
FUNNELVISION	The Little Mermaid (G) FunnelVision				Pixar Shorts (G) FunnelVision				Hercules (G) FunnelVision													
MOVIES	The Avengers (PG-13) 2D Version Buena Vista Theatre																					
CHARACTER					Princess Gathering Lobby Atrium				Mickey Mouse Deck 4, Balcony				Cinderella Atrium									
					Minnie Dk 4, Balcony				Minnie Atrium				Daisy Preludes		Belle Atrium		Donald Preludes					
FUN FOR ALL AGES	Disney Animation: Creating a Character D Lounge				Disney Vacation Club Presentation Evolution				\$5,000 MEGA Jackpot BINGO D Lounge				Disney's MIRROR D Lounge				VILLAINS TONIGHT! Walt Disney Theatre					
													Live Music with The Dreamers Lobby Atrium				Disney Disco D Lounge					
ADULTS	Making of the Dream Evolution				Art of The Theme Show Tour Meet at Meridian				Mixology (21+) Skyline(Pre-book/NomFee)				Live Guitar Quiet Cove		ESPN MNF Call It! 687 Pub		Live Piano District Lounge					
	Closest to the Pin Competition Goofy's Sports Deck				Secrets to a Flatter Stomach Senses Spa & Salon				Live Guitar Quiet Cove				Pathway to Pilates Sense Fitness Center		18*21 Mini Golf Goofy's Sports Deck							
VIBE	Sports Simulator				Animation				Sports Deck				Super Sloppy Science									
EDGE					Animation								Sports Deck									
OCEANEER LAB	Get the Hook				Magic Playfloor				Youth Activities Open House "Super Sloppy Science" 4:00 p.m. - 4:45 p.m.				Mirror, Mirror D Lounge		Dinner		Anyone Can Cook					
OCEANEER CLUB	Aloha Luau				Cruisin' with Crush				Magic Playfloor		Once Upon a Time		Dinner		Toy Story Boot Camp							

Evening	7:00	7:15	7:30	7:45	8:00	8:15	8:30	8:45	9:00	9:15	9:30	9:45	10:00	10:15	10:30	10:45	11:00	11:15	11:30	11:45	12:00	
FUNNELVISION	The Lion King (G) FunnelVision				Emperor's New Groove (G) FunnelVision				Remember the Titans (G) FunnelVision													
MOVIES	Brave (PG) Buena Vista Theatre																					
CHARACTER	Mickey Dk 4, Balcony		Daisy Preludes		Mickey Dk 4, Balcony		Goofy Dk 4, Balcony				Mickey Dk 4, Balcony		Donald Preludes		Mickey Dk 4, Balcony		Aurora Atrium					
	Minnie Atrium		Minnie Atrium		Donald Preludes		Cinderella Atrium				Snow White Atrium		Donald Preludes									
FUN FOR ALL AGES	Bingo Pre Sales		Senses Spa BINGO D Lounge				VILLAINS TONIGHT! Walt Disney Theatre				Live Music with The Dreamers Lobby Atrium				Family FUSION D Lounge		Family FUN D Lounge		Family Superstar Karaoke D Lounge			
	Family Dance Party Evolution				Family Superstar Karaoke D Lounge				Live Piano with Tom Scott Lobby Atrium													
ADULTS	Name That 70's Tune 687 Pub				NCAA Football 687 Pub (Subject to blackouts & satellite reception)				Whiskey Tasting (21+) Meridian(Pre-book/NomFee)				Dream Quest Evolution		Match Your Mate Evolution		8 Trax feat. the Evolution Dancers Evolution					
	Georgetown Trio LIVE District Lounge				Live Piano with Tom Scott District Lounge				Georgetown Trio LIVE District Lounge		18*21 Mixer Evolution		Georgetown Trio LIVE District Lounge		Live Music with Georgetown Trio District Lounge							
VIBE					Teen AquaDuck				Pump It Up				Magic Show				Ghost Voyagers					
EDGE	Anyone Can Cook				Tween AquaDuck								That's Hilarious!									
OCEANEER LAB	Magic Show				Super Sloppy Science								Pirates of the Caribbean: Tides of Fortune				Magic Playfloor					
OCEANEER CLUB	Little Einsteins				Magic Playfloor				Camp Rocking Out				Movie Time									

MONDAY, SEPTEMBER 3, 2012 - NASSAU, BAHAMAS

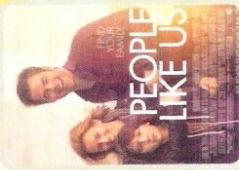
BUENA VISTA THEATRE



12:30 p.m.,
5:30 p.m. & 8:30 p.m.
Run Time: 1 hr 31 min
Rating: PG



2:30 p.m. - **OC**
Run Time: 2 hr 26 min
Rating: PG-13



10:30 p.m.
Run Time: 1 hr 55 min
Rating: PG-13

Character Appearances

PRINCESS GATHERING
Lobby Atrium
9:00 a.m. & 3:30 p.m.
(Ship's photographers available for the 9:00 a.m. gathering only.)

TINKER BELL
Lobby Atrium -
9:15 a.m. & 3:45 p.m.

MINNIE MOUSE
Deck 4, Balcony - 9:15 a.m.,
10:15 a.m. & 3:45 p.m.
Lobby Atrium - 4:45 p.m.,
7:15 p.m. & 7:45 p.m.

DAISY DUCK
Deck 4, Balcony - 9:45 a.m.
Preludes -
5:00 p.m. & 7:30 p.m.

MICKEY MOUSE
Lobby Atrium - 1:00 p.m.,
Deck 4, Balcony - 5:00 p.m.,
7:15 p.m. & 9:30 p.m.

BELLE
Lobby Atrium - 5:15 p.m.

DONALD DUCK
Preludes - 5:30 p.m., 8:00 p.m.,
9:45 p.m. & 10:15 p.m.

For details of daily Disney character appearances, refer to the character line in your Navigator Grid or the digital character board in the Lobby Atrium.



YOUTH ACTIVITIES THEMED EXPERIENCES

CLUBHOUSE SERIES
includes large ground games & movement-oriented activities.

STORYBOOK SERIES
is designed with a strong connection to the Disney classic stories.

JUMP UP! SERIES
& movement-oriented activities.

CREATE & INVENT SERIES
will have a tactile focus allowing children to create and admire their work.

IN THE SPOTLIGHT SERIES
focuses on children's stage presence with lots of activities and enthusiasm.

SOLVE IT! SERIES
children with problem/solutions based activities.

OPEN HOUSE

activities for families, adults and children of all ages to enjoy together.

SHIP DIRECTORY

YOUTH ACTIVITIES

DISNEY'S OCEANEER CLUB DECK 5, MID 10:30 A.M. - 12:00 MID
DISNEY'S OCEANEER LAB DECK 5, MID 9:00 A.M. - 1:00 A.M.
EDGE DECK 13, MID 10:00 A.M. - 1:00 A.M.
VIBE DECK 4, FWD 11:00 A.M. - 2:00 A.M.
IT'S A SMALL WORLD NURSERY DECK 5, MID 9:00 A.M. - 1:00 A.M.

RECREATION

AQUADUCK DECK 12, MID 9:00 A.M. - 12:00 MID
DONALD'S POOL DECK 11, MID 6:00 A.M. - 12:00 MID
GOLF/SPORTS SIMULATORS DECK 13, AFT 11:00 A.M. - 6:00 P.M.
GOOPY & MAX'S MINI GOLF DECK 13, AFT 8:00 A.M. - 10:00 P.M.
GOOPY'S SPORTS DECK DECK 13, AFT 12:00 A.M. - 6:00 P.M.
MICKEY'S POOL DECK 11, MID 6:00 A.M. - 12:00 MID
MICKY'S SUDE DECK 11, MID 9:00 A.M. - 7:00 P.M.
MIDSHIP DETECTIVE AGENCY DECK 5, MID 8:00 A.M. - 11:00 P.M.
NEWJO'S REEF DECK 11, MID 9:00 A.M. - 7:00 P.M.
PORT ADVENTURES DESK DECK 5, MID 8:00 A.M. - 11:00 A.M.
QUIET COVE POOL DECK 11, FWD 6:00 A.M. - 8:30 P.M.
SENSES FITNESS CENTER DECK 11, FWD 6:00 A.M. - 10:00 P.M.

GENERAL INFORMATION

ARR-CADE DECK 11, AFT 24 HOURS
DISNEY VACATION CLUB DECK 4, MID 9:00 A.M. - 11:00 A.M.
FUTURE CRUISE SALES DESK DECK 4, MID 5:30 P.M. - 10:00 P.M.
GUEST SERVICES DECK 3, MID 8:00 A.M. - 10:00 A.M.
MEDICAL HEALTH CENTER DECK 1, FWD 3:00 P.M. - 11:00 P.M.
PORT & SHOPPING DESK DECK 4, MID 9:30 A.M. - 11:00 A.M.
PRELUDES DECK 3, FWD 4:30 P.M. - 7:00 P.M.
SENSES SPA AND SALON DECK 11, FWD 8:00 P.M. - 6:30 P.M.
SHUTTERS PHOTO GALLERY DECK 4, MID 8:00 P.M. - 8:45 P.M.
5:00 P.M. - 11:00 P.M.

SHOPPING

MICKEY'S MAINSAIL DECK 3, FWD 7:00 P.M. - 11:00 P.M.
SEA TREASURES DECK 3, FWD 7:00 P.M. - 11:00 P.M.
VISTA GALLERY DECK 3, FWD 7:00 P.M. - 11:00 P.M.
WHITECAPS DECK 3, FWD 7:00 P.M. - 11:00 P.M.
WHOZITS & WHATZITS DECK 11, MID 7:00 P.M. - 10:00 P.M.

All Ashore: Approx. 9:30 a.m.
All Aboard: 6:15 p.m.

SHIP'S AGENT IN NASSAU

Nassau, Bahamas
R.H. Curry & Company, 303 Shirley St.,
P.O. Box N8168 Nassau, Bahamas
2-42-323-8425 or 242-357-9218

IMPORTANT NUMBERS

Fire/Security: 7-3001
Medical/Emergency: 7-3000
Health Center: 7-1923

DINNER MENUC
Animator's Palette-Pacific Rim Cuisine
Enchanted Garden-Continental Market
Royal Palaces-French Dinner
Dining Times: 5:45 p.m. & 8:15 p.m.

Evening Attire: Optional Dress Up

DINING & LOUNGES

BRICKYARD

CABANAS CONTINENTAL DECK 11, AFT 7:00 A.M. - 7:30 A.M.
CABANAS DECK 11, AFT 7:30 A.M. - 10:30 A.M.
ENCHANTED GARDEN DECK 2, MID 8:00 A.M. - 10:45 A.M.
ROYAL PALACE DECK 3, MID 8:00 A.M. - 9:30 A.M.

LUNCH

CABANAS DECK 11, AFT 12:00 P.M. - 2:00 P.M.
FILMGRÉ'S FAVORITES DECK 11, MID 11:00 A.M. - 6:00 P.M.
LUGI'S PIZZA DECK 11, MID 11:00 A.M. - 6:00 P.M.
ROYAL PALACE DECK 3, MID 12:00 P.M. - 1:30 P.M.
TOW MASTER'S GRILL DECK 11, MID 11:00 A.M. - 6:00 P.M.

DINNER

ANIMATOR'S PALATIE DECK 3, AFT 5:45 P.M. & 8:15 P.M.
ENCHANTED GARDEN DECK 2, MID 5:45 P.M. & 8:15 P.M.
ROYAL PALACE DECK 3, MID 5:45 P.M. & 8:15 P.M.
CABANAS TABLE SERVICE DECK 11, AFT 6:30 P.M. - 8:30 P.M.
TOW MASTER'S GRILL DECK 11, MID 6:00 P.M. - 11:00 P.M.
PALO & REMY (18+) DECK 12, AFT 6:00 P.M. - 9:00 P.M.
(RESERVATION REQUIRED & COVER CHARGE APPLICABLE. DAL #7-9734)

LATE NIGHT SNACKS

LUGI'S PIZZA DECK 11, MID 9:30 P.M. - 12:30 A.M.
THE DISTRICT DECK 4, AFT 10:45 P.M. - 11:45 P.M.

ADDED FEATURES

BEVERAGE STATION DECK 11, AFT 24 HOURS
EYE SCREAM DECK 11, MID 11:00 A.M. - 11:00 P.M.
ROOM SERVICE DIAL O 24 HOURS

ENTERTAINMENT - LOUNGES - BARS

Adults must be 21 and older to consume alcoholic beverages.

687 PUB DECK 4, AFT 5:00 P.M. - 9:00 P.M.
687 PUB (18+) DECK 4, AFT 9:00 P.M. - 12:30 A.M.
BON VOYAGE DECK 3, MID 9:00 A.M. - 11:00 P.M.
COVE BAR (18+) DECK 11, FWD 10:30 A.M. - 11:00 P.M.
COVE CAFE (18+) DECK 11, FWD 7:00 A.M. - 6:00 P.M.
COVE CAFE WINE BAR (18+) DECK 11, FWD 6:00 P.M. - 12:00 MID
CURRENTS (18+) DECK 13, FWD 11:00 A.M. - 12:30 A.M.
D LOUNGE DECK 4, MID SHOWTIMES
DISTRICT LOUNGE DECK 4, AFT 4:00 P.M. - 9:00 P.M.
DISTRICT LOUNGE (18+) DECK 4, AFT 9:00 P.M. - 12:00 MID
EVOLUTION (18+) DECK 4, AFT 9:30 P.M. - 2:00 A.M.
FROZONE TREATS DECK 11, MID 11:00 A.M. - 11:00 P.M.
MERIDIAN (18+) DECK 12, AFT 5:00 P.M. - 12:30 A.M.
PINK (18+) DECK 4, AFT 5:00 P.M. - 12:30 A.M.
OUTLOOK DECK 14, MID SUNSET TIME
SKYLINE (18+) DECK 4, AFT 5:00 P.M. - 12:30 A.M.
VISTA CAFE DECK 4, MID 7:30 A.M. - 11:00 P.M.
WAVES DECK 12, AFT 12:00 P.M. - 7:00 P.M.

Consumers who order raw or partially cooked, ready-to-eat food of animal origin, are hereby informed that the food is not sufficiently cooked to ensure its safety.

IMPORTANT INFORMATION
Please check your Port Adventure tour tickets for meeting times and locations. Visit the Port Adventures Deck 5, Midship, for any questions.

