

PERSONAL NAVIGATOR



Sunrise: 6:29 a.m. Sunset: 7:05 p.m.
 Evening Attire: Cruise Casual
 All Ashore: 1:00 p.m. All Aboard: 5:30 p.m.

Tuesday: Partly Sunny High: 79°F/26°C
 Wednesday: Partly Sunny High: 84°F/29°C

TUESDAY, APRIL 16, 2013

COSTA MAYA, MEXICO

Disney WISHES

On the eve of their graduation, three best friends go on a magical journey down the wishing well. A host of Disney characters help them discover the connection between children who are becoming adults, and adults who stay in touch with being a kid at heart.

**Walt Disney Theatre
 Deck 3 & 4, Forward
 6:15 p.m. & 8:30 p.m.**



Assistance available at the entrance to the Walt Disney Theatre 30 minutes prior to show time.



Costa Maya Port Information

Costa Maya is a tourist region located on the Yucatán Peninsula 100 miles south of Playa del Carmen near the border of Belize in Mexico. Comprised of two small villages, Mahahual and Xcalak, Costa Maya provides a picture-perfect getaway the entire family is sure to love.

Early Mayans were predominant in the area from 200 B.C. to 900 A.D. In the 16th century, English pirates ravaged the coast and battled the Spanish for control of the region. At the end of the 19th century, the Mexican Navy took over the land. A treaty with Britain was signed soon after limiting the territorial rights of Mexico, thereby forcing Mexico to build a new trade port in Xcalak.

By the 1950's, the economy was flourishing as businesses - including stone and wood construction companies - made the area a supply center for the region. Steady growth continued until the mid-1990's when the government outlined a plan to make Costa Maya a tourist destination. Today, tourism is Costa Maya's main economic revenue stream and it's easy to understand why, thanks to the island's plethora of unspoiled natural beauty that has remained untouched for thousands of years.

DOCKING

The ship will dock at the Puerto Costa Maya, located approximately 1/2 mile north of Mahahual.

Bring the family out to this interactive dance party featuring The Three Amigos. We will party with Donald Duck, learn Salsa, Merengue and have a Latin good time!
 D Lounge,
 Deck 4, Midship,
 10:15 p.m.

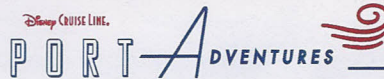
Don't Miss:

LIVE Art Auction Featuring David Schluss
The Tube, Deck 4, Aft - 10:00 a.m. (Preview at 9:30 a.m.)
 Going once, going twice, sold! Don't miss out on the action of this bidding war where you'll have the chance to claim amazing pieces of artwork for your own, including original artwork by well-known artist David Schluss. Art preview at 9:30 a.m. followed by live auction at 10:00 a.m., The Tube, Deck 4, Aft.

Disney Channel on Deck
Deck Stage, Deck 11, Midship, - 11:00 a.m.
 Don't change that channel! It's time for a Disney Channel pool party! Your Cruise Staff will host exciting games and contests in between your favorite Disney Channel shows! So sit back, relax, and enjoy the sun!

50 Movie Quotes Trivia
O'Gills Pub, Deck 4, Aft - 4:00 p.m.
 "Life is like a box of Chocolates" Know the movie? Join your Cruise Staff and test your Movie Quote knowledge.

80's Music Challenge (18+)
The Tube, Deck 4, Aft - 10:30 p.m.
 "Moon Walk" back to the 80's, as we put your musical knowledge of the decade to the test.



Please check your tour tickets for meeting times and locations. Visit the Port Adventures Desk, Deck 5, Midship for any questions.

DINNER MENU
 Animator's Palate: Prince & Princess Menu
 Enchanted Garden: Prince & Princess Menu
 Royal Court: Prince & Princess Menu

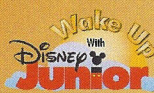
DRINK OF THE DAY
 Key Lime Margarita (Alcoholic)
 Cranberry NO-Jito (Non Alcoholic)

IMPORTANT NUMBERS

Fire/Security: 7-3001
 Medical Emergency: 7-3000
 Health Center: 7-1923

FUN FOR ALL AGES HIGHLIGHTS

ADULT ACTIVITY HIGHLIGHTS



WAKE UP WITH DISNEY JUNIOR

D Lounge, Deck 4, Midship - 8:30 a.m.
What happens when you experience unlimited fun with your favorite Disney Junior shows? An exciting dance party designed especially for preschoolers ages seven and under.

COZUMEL HIGHLIGHTS PRESENTATION

Buena Vista Theatre, Deck 4 & 5, Forward - 11:00 a.m.
Last chance to learn about the amazing shopping ashore this cruise. Join your Shopping Guides Johan & Marissa for all of your last minute tips from Vanilla to Diamonds. Don't miss the raffle to win beautiful Jewelry!

DISNEY TUNE TRIVIA

La Piazza, Deck 4, Aft - 11:00 a.m.
Join your Cruise Staff and pianist Gayla Smith, as they put your Disney Tune knowledge to the test.



DISNEY CHANNEL ON DECK

Deck Stage, Deck 11, Midship - 11:00 a.m.
Don't change that channel! It's time for a Disney Channel afternoon poolside! Your cruise staff will host exciting games and contests in between your favorite Disney Channel shows! So sit back, relax, and enjoy the sun!

PLAYHOUSE D LOUNGE

D Lounge, Deck 4, Midship - 5:00 p.m.
Calling our youngest of cruisers! Here is a special Playtime that is just for you. Come meet new friends and join in on the fun as your Cruise Staff team takes you through interactive activities made just for you!

DISNEY TRIVIA

D Lounge, Deck 4, Midship - 9:45 p.m.
Navigate your way through another round of questions to test how much you really know about Disney.



SENSES SPA FITNESS CLASSES & SEMINARS

Sunrise Stretch - Donald's Pool - 7:00 a.m.
Fab Abs - Senses Fitness Center - 7:30 a.m. 5:00 p.m.
Body Sculpt Boot Camp (Nom. Fee) - Senses Fitness Center - 9:00 a.m.
Secrets to a Flatter Stomach - Senses Spa & Salon - 10:00 a.m.
Back Pain Solutions - Outlook, Deck 14, Mid - 10:30 a.m.
Facial Workshop - Senses Spa & Salon - 11:00 a.m.
Posture Analysis - Senses Fitness Center - 11:30 a.m.
Pathway to Yoga - Senses Fitness Center - 4:00 p.m.

CLUB
18*21

CLUB 18*21 - SOCIAL
Cove Cafe, Deck 11, Forward - 11:45 a.m.

CLUB 18*21 - ARR-CADE SOCIAL
Arr-cade, Deck 11, Aft - 5:00 p.m.

CLUB 18*21 - MIXER
O'Gills Pub, Deck 4, Aft - 10:00 p.m.

ART OF THE THEME SHOW TOUR (18+)

Pre-Book at Guest Services, Deck 3, Midship - 9:30 a.m.
Join us on a guided ship tour and discover the key ingredients that make the Disney Fantasy cruise ship one-of-a-kind.

PUB QUIZ

O'Gills Pub, Deck 4, Aft - 10:15 a.m., 6:30 p.m. & 8:45 p.m.
Join us as we test your knowledge against your fellow Guests at our Pub Quiz challenge.

50 MOVIE QUOTES TRIVIA

O'Gills Pub, Deck 4, Aft - 4:00 p.m.
"Life is like a box of Chocolates" Know the movie? Join your Cruise Staff and test your Movie Quote knowledge.

80'S MUSIC CHALLENGE

The Tube, Deck 4, Aft - 10:30 p.m.
"Moon Walk" back to the 80's, as we put your musical knowledge of the decade to the test.

80'S/90'S REMIX WITH GUEST DJ CLINT KUPER

The Tube, Deck 4, Aft - 11:00 p.m.
Join Guest DJ Clint Kuper, as he spins the tunes and remix the 80's & 90's!



DOUBLE UP JACKPOT BINGO

D Lounge, Deck 4, Midship

Card Sales - 7:15 p.m.

Game Starts - 7:30 p.m.

Special double up session: All electronic cards purchased will be doubled.
The snowball jackpot continues to grow and could be won today!



YOUTH ACTIVITY HIGHLIGHTS

DINE & PLAY

A convenience for families dining at 8:15 p.m., our Youth Activities Counselors will be available at 9:15 p.m. at the entrance of Royal Court, Enchanted Garden and Animator's Palate dining rooms to bring registered children to join the fun in the Youth Activity areas.



Deck 5, Midship (7-1440)
(3-12 years old) 9:00 a.m. - 11:00 p.m.

JOURNEY TO NEVERLAND

10:30 a.m.
Join Peter Pan as he takes you on an adventure on the Magic Playfloor.

DISNEY ANIMATION: CREATING A CHARACTER

1:45 p.m.
Go behind the scenes at Walt Disney Animation Studios as Walt Disney himself talks about his most famous characters, then learn the basic techniques of drawing Mickey and Donald in this fun and interesting enrichment program.



Deck 5, Midship (7-1445)
(3-12 years old) 9:00 a.m. - 12:00 mid

SUPER SLOPPY SCIENCE

9:30 a.m.
Join Professor Make-O-Mess in some of the most extreme experiments you will ever seen in the world of Super Sloppy Science!

MAGIC SHOW

11:15 a.m.
Come and watch the best Magic Show on the high seas!



Deck 13, Midship (7-9743)
(11-14 years old) 10:00 a.m. - 1:00 a.m.

ANIMATION CELLS

12:00 p.m.
Learn what it takes to be a Disney Animator, then put your new skills to the test as you create your very own animation cell.

ANYONE CAN COOK

2:30 p.m.
Anyone can cook as we work together to create some of our favorite treats.



Entrance on Deck 4, Forward (7-9418)
(14-17 years old) 10:00 a.m. - 2:00 a.m.

DISNEY ANIMATION: CREATING A CHARACTER

5:00 p.m.
Go behind the scenes at Walt Disney Animation Studios as Walt Disney himself talks about his most famous characters, then learn the basic techniques of drawing Mickey and Donald in this fun and interesting enrichment program.

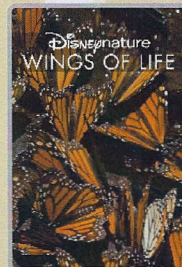
ESPN DREAM TEAM DRAFT DAY - FOOTBALL

7:15 p.m.
Join the "Commissioner" and engage in this interactive fantasy football draft unlike anything you've ever seen! Can YOU draft the greatest football team of All-Time?

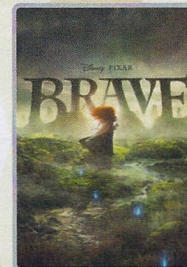
BUENA VISTA THEATRE

Today's Movies

OC - Open Captioning

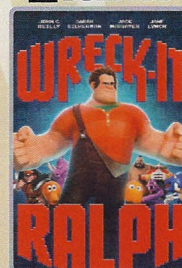


1:45 p.m.
Duration: 1 hr 17 min
Rating: G



3:30 p.m.
Duration: 1 hr 41 min
Rating: PG

DOLBY 3D

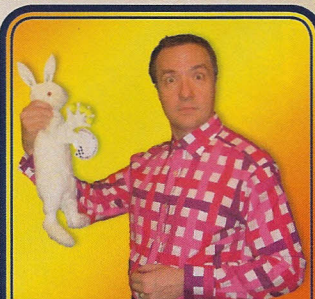


5:30 p.m. & 8:00 p.m.
Duration: 1 hr 53 min
Rating: PG

DOLBY 3D



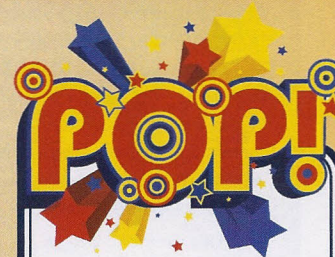
10:30 p.m.
Duration: 2 hr 22 min
Rating: PG-13



FAMILY CABARET

Featuring the
Comedy & Magic of
Levent,
as he entertains the
entire family in this
fun-filled show.

*The Tube,
Deck 4, Aft,
7:30 p.m.*



Have you been told you are
full of useless information
about pop culture?
If the answer is "Yes,"
then you have what it takes
to play the high energy
game show all about
the world of Pop!

*The Tube (18+),
Deck 4, Aft,
10:00 p.m.*

YOUTH ACTIVITIES OPEN HOUSE

Open House is an opportunity for all to come and participate in a variety of exciting activities and free time in the Oceaneer Club, Lab and Edge throughout the cruise. During these times secured programming will still be offered in the other venue for those looking to check their children into care.

Edge: 9:00 a.m. - 10:00 a.m. Disney's Oceaneer Lab: 1:00 p.m. - 2:30 p.m.
Disney's Oceaneer Club: 9:00 a.m. - 10:00 a.m.

MORE TO ENJOY WHILE ONBOARD



COZUMEL SHOPPING PRESENTATION

Cozumel is the largest tax and duty free shopping port in the Western Caribbean. Learn about everything from Vanilla to Diamonds & Swiss Time Pieces. All to attend will receive a free Sea Shell Charm and the chance to win a Larimar gemstone pendant. 11:00 a.m. Buena Vista Theatre, Decks 4 & 5, Forward



DISNEY VACATION CLUB® GROUP PREVIEW

Want to learn more about taking magical vacations year after year? Please see a Disney Vacation Club representative on Deck 4, Midship, or call 7-2805 from your stateroom phone for more information about our interactive group presentation.



PLAN YOUR NEXT CRUISE

Enjoying the Cruise? Book another Disney Cruise Line vacation today! Today is a great day to visit the Future Cruise Sales Desk, Deck 4, Midship, or call extension 7-2848 to find out how you can save 10%, receive up to a \$200 onboard credit, and pay a reduced deposit on your next cruise!





SALON TASTER SPECIAL

- Scalp Massage
- European Facial
- Hand Treatment
- Sunglow Makeover
- Conditioning Hair Treatment
- Eye Collagen Treatment

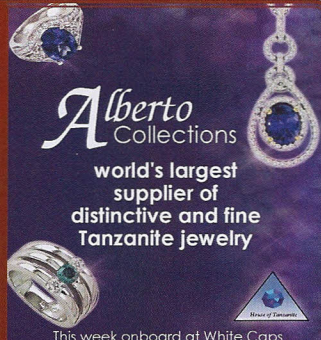
- Foot & Ankle Massage
- Neck & Shoulder Massage

Three for 99.00
Five for 119.00
All Eight for 139.00

ALBERTO TRUNK SHOW

House of Tanzanite special trunk show of fine Tanzanite, colored Diamonds, Alexandrite, and Emerald jewelry from classic chic to over the top elegant designs hand made in the US.

This week onboard at Whitecaps, Deck 3, Forward



Alberto Collections
world's largest supplier of distinctive and fine Tanzanite jewelry

This week onboard at White Caps



DIGITAL PACKAGES

Do you only need a small number of digital images of your photos? We now offer two digital packages where you can choose your selected images in the comfort of your own home! Send them to friends or upload them on social media sites, the choice is yours! Please see one of our friendly Shutters staff to explain this great new product. Your photos will be available for viewing on our interactive kiosks in Shutters Digital as well as in your personal photo folder in Shutters, Deck 4 Midship, Conditions applies.

*Please note that photos are available for viewing on our interactive photo kiosks approximately five hours after being taken and are only available for purchase during this cruise.

ONBOARD AIRLINE CHECK IN

If you would like to have your boarding passes printed for you onboard and have your luggage taken to the airport for you, register by midnight tomorrow. If you have a Disney Cruise Line airport transfer to Orlando International Airport and fly with one of the participating airlines, stop at Guest Services, Deck 3, Midship to register.

ARR-CADE

Where can you be a ninja, play the guitar like a rock star, race a car down the streets of Tokyo and along the way WIN some great prizes? Arr-CADE located Deck 11, Aft, where the pirates play.

ON DEMAND TV

Watch Disney movies, Hollywood features, ABC Shows, and even captioned content, plus much more "On Demand" for FREE in the comfort of your stateroom! Bookmark your movie and come back to watch it later. Press MENU on your stateroom television remote control, and follow the prompts.



Welcome to Costa Maya, a secluded destination on Mexico's stunning Riviera Maya! The port of Costa Maya is booming and there are many amazing new Port Adventures to choose from. There is limited availability on tours, so stop by the Port Adventures Desk, Deck 5, Midship, to reserve your place. Don't forget to plan ahead for Castaway Cay, where only a few Stingray encounters remain available.

SHOPPING

FRAGRANCE OF THE DAY

Stop by Whitecaps to test our selected fragrance today! Deck 3, Forward.

SILENT AUCTION - DAVID SCHLUSS

Stop by the Vista Gallery and place your bid on a piece of artwork created by David Schluss, an artist who uses only his hands and fingers instead of paintbrushes. This silent auction will be closing Thursday at 11:00 p.m. Vista Gallery, Deck 4, Midship.

H₂O BATH COLLECTION

Treat yourself to the ultimate indulgence with H₂O bath products. H₂O offers shampoo, conditioner, lip balm, hydrating body lotion and after sun care. Available in Whitecaps, Deck 3, Forward.

ALBERTO COLLECTION HOUSE OF TANZANITE PRESENTATION

Come learn about the beauty of Tanzanite, one of the worlds most elegant gems. This is a one-of-a-kind presentation you don't want to miss. Today in Whitecaps, Deck 3, Forward at 11:00 a.m.

GODIVA®

Stop by Whitecaps to satisfy your sweet tooth with GODIVA® chocolate. Receive a free GODIVA® tablet case with a \$50 purchase and a free GODIVA® gold tote bag with a \$60 purchase of any GODIVA® items. Deck 3, Forward.

OFFICER PIN TRADING

Come and trade pins with the officers of the Disney Fantasy at 7:30 p.m. in Preludes, Deck 3, Forward.

Due to port regulations, when the ship is docked, the stores will remain closed.

IMPORTANT INFORMATION

Security Notice
All Guests (including children) who wish to disembark the ship are required to present their Key to the World card at the gangway. A photo ID is also required for those Guests who are 18 years of age or older. Guests under the age of 18 are required to have a Parent, Guardian or other responsible adult sign an authorization form at the time it is given out if they wish to go ashore unaccompanied. Authorization forms are available at the gangways and Guest Services.

Please Note:
Please remember to use plenty of sunscreen & mosquito/ Insect repellent when venturing ashore.

Cold and Flu Reminder
Please wash hands frequently and thoroughly, particularly before meals. Contact the Health Center by dialing 7-1923, should anyone in your party become ill.

Corridor Quiet Hours
As a courtesy to all our Guests, please recognize quiet hallway hours from 10:00 p.m. til 8:00 a.m.

Inclement Weather
For the safety of all Guests, outdoor events may be changed due to unforeseen weather conditions.


Environmental Message
With Disney's commitment to the Environment, please refrain from throwing anything over the Ship's side. Thank you!

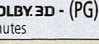

No Reserved Seats Policy
As a courtesy to all our Guests, we kindly advise that the saving of seats is not permitted in the Walt Disney Theatre, and the saving of the sun loungers is not permitted on Deck 11, 12, and 13. Items left unattended will be returned to lost and found at Guest Services, Deck 3 Midship.

Smoking
For the comfort of our guests the following areas are designated as Smoking areas: - Promenade Deck (Deck 4), smoking is permitted Port Side, Aft only from 6:00 p.m. to 6:00 a.m.
- Currents - Deck 13, Forward, Port Side.
- Meridian Bar - Deck 12, Aft, Port Side, outside.
-Smoking is permitted on stateroom verandahs. Smoking is prohibited inside all guest staterooms. Guests found smoking in their staterooms will be charged a \$250 stateroom recovery fee.

Walt Disney Theatre
Theatrical performances may use artificial fog, strobe lights, pyrotechnics and other special effects. For the safety of our performers and the comfort of those around you, the use of any photography, video recording device or any electronic equipment is prohibited.

Verandah Safety
Please do not leave any combustible materials on your balcony when not present in your stateroom for safety reasons.

Morning	8:30	8:45	9:00	9:15	9:30	9:45	10:00	10:15	10:30	10:45	11:00	11:15	11:30	11:45	12:00	12:15	12:30	12:45	1:00	1:15	1:30
FUNNEL VISION	The Jungle Book (G) Funnel Vision				Disney Channel on Deck Funnel Vision				Pinocchio (G) Funnel Vision												
BUENA VISTA THEATRE	Hypnosis Seminar with Ricky Kalmon (18+)				Cozumel Highlights Presentation																
CHARACTER	Mickey DK 4, Mid		Peter Pan DK 4, Mid		Princess Gathering Lobby Atrium		Tinker Bell Daisy Lobby Atrium (V) DK 4, Mid		Minnie DK 4, Mid		Tinker Bell Lobby Atrium (V)										
FUN FOR ALL AGES	 Disney Animation: Persistence of Vision D Lounge		Disney Vacation Club Group Preview D Lounge		Disney Channel on Deck Deck Stage		Board Games Available in O'Gills Pub														
			Crafts: 3D Crafts La Piazza		Art Auction featuring Guest Artist David Schlus The Tube		Disney Tunes Trivia La Piazza		Port Adventures - Please check your tickets for meeting times and locations				Cozumel Highlights Presentation Buena Vista Theatre		Last Minute Shopping Advice Gangway						
ADULTS	Friends of Bill W. Outlook, Deck 14, Mid		Art of The Theme Show Tour (18+) Pre-Book at Guest Services		Pub Quiz O'Gills Pub		Posture Analysis Senses Fitness Center														
	Body Sculpt Boot Camp Senses Fitness Center		Secrets To A Flatter Stomach Senses Spa & Salon		Back Pain Solutions Outlook, Deck 14, Mid		Facial Workshop Senses Spa & Salon		Club 18*21 - Social Cove Cafe												
VIBE 14-17 YEARS OLD	Coffee Break				Dream Now! Sea How! - Theatrical				Sun Deck Fun												
EDGE 11-14 YEARS OLD	Open House				Checkers Challenge				Four Square				Animation Cells		Chillin' in the Edge						
OCEANEER LAB 3-12 YEARS OLD	Super Sloppy Science				GAGA Ball		Craft Corner		Lunch				Open House								
					Human Bingo		Magic Show						Open House - Magic Playfloor								
OCEANEER CLUB 3-12 YEARS OLD	Open House				Journey to Neverland		Make Your Own Puppet		Lunch		Parachute Games										
	Aloha Luau						Puzzle Playtime		Matinee Movie												

Afternoon	1:45	2:00	2:15	2:30	2:45	3:00	3:15	3:30	3:45	4:00	4:15	4:30	4:45	5:00	5:15	5:30	5:45	6:00	6:15	6:30	6:45	
FUNNEL VISION	Tangled (PG) Funnel Vision				Hercules (G) Funnel Vision				High School Musical (G) Funnel Vision													
BUENA VISTA THEATRE	Disney Nature: Wings of Life (G) Duration: 1 Hour 17 Minutes				Brave (PG) - With Open Captioning Duration: 1 Hour 41 Minutes				Wreck-It Ralph  (PG) Duration: 1 Hour 53 Minutes				>7:23 p.m.									
CHARACTER							Mickey Lobby Atrium (P)		Buzz Lobby Atrium (V)		Cinderella Lobby Atrium (P)		Phineas & Ferb Lobby Atrium (H)		Belle Lobby Atrium (P)							
FUN FOR ALL AGES	Board Games Available in O'Gills Pub				Live Guitar with John Kevish Deck 12, Forward				Live Music with The Switch Lobby Atrium													
	Family Crafts - Paper Plane Making La Piazza				Playhouse D Lounge				 Walt Disney Theatre													
ADULTS	Midship Detective Agency - Deck 2 & 5, Midship				Xbox® Kinect™ - Wipeout Challenge O'Gills Pub																	
	Informal Card Play O'Gills Pub		50 Movie Quotes Trivia O'Gills Pub		Club 18*21 - Arr-Cade Social Arr-cade		Pub Quiz O'Gills Pub															
VIBE 14-17 YEARS OLD	Animation Cells		Games Galore		Dive into DJ'ing		Disney Animation: Creating a Character				Anyone Can Cook											
EDGE 11-14 YEARS OLD	Chillin' in the Edge		Anyone Can Cook		Pizza Party		GAGA Ball		Ninja		Disney Sing It											
OCEANEER LAB 3-12 YEARS OLD	Open House		Xbox® Kinect™ Tournament		Detective School		Marshmallow Olympics		Youth Dinner				Wii Challenge									
			Craft Madness		Bingo								Parachute Games									
OCEANEER CLUB 3-12 YEARS OLD	Matinee Movie		Play-Doh Creations		Once Upon a Time						Monster's Game Galore		Create A Picture									
	Disney Animation: Creating a Character		Memory Wall		Connect Four Challenge						Picture This		Ball Games									
OUT AND ABOUT	Basketball Challenge Goofy's Sports Deck																					

Evening	7:00	7:15	7:30	7:45	8:00	8:15	8:30	8:45	9:00	9:15	9:30	9:45	10:00	10:15	10:30	10:45	11:00	11:15	11:30	11:45	12:00
FUNNEL VISION	High School Musical 2 (G) Funnel Vision				Remember the Titans (PG) Funnel Vision																
BUENA VISTA THEATRE	Wreck-It Ralph in Dolby 3D - (PG) Duration: 1 Hour 53 Minutes				Wreck-It Ralph  (PG) Duration: 1 Hour 53 Minutes				The Avengers  (PG-13) Duration: 2 Hours 22 Minutes				>12:54 a.m.								
CHARACTER	Cinderella Lobby Atrium (P)		Buzz Lobby Atrium (V)		Phineas & Ferb Lobby Atrium (H)		Woody Lobby Atrium (V)		Pluto Preludes		Phineas & Ferb Lobby Atrium (H)		Mickey Lobby Atrium (P)								
FUN FOR ALL AGES	Bingo Pre Sales D Lounge		Double Up Jackpot Bingo D Lounge		 Walt Disney Theatre		Disney Trivia D Lounge		 D Lounge		Family Superstar Karaoke D Lounge		Viva Fiesta D Lounge								
			Family Cabaret: Levent The Tube - Magic				Live Music with The Switch Lobby Atrium		Jazz Ballads with The Switch Lobby Atrium												
ADULTS	Live Guitar with John Kevish O'Gills Pub		Pub Quiz O'Gills Pub		POP! The Tube		80's Music Challenge The Tube		80's/90's Remix with Guest DJ Clint Kuper The Tube												
					Club 18*21 Mixer O'Gills		Live Music with June Gypsies La Piazza														
VIBE 14-17 YEARS OLD	ESPN Dream Team Draft Day - Football		Smoothie Time		Pump It Up		Mad Gab		Gender Wars												
EDGE 11-14 YEARS OLD	Elephant Soccer		That's Hilarious		Photo Hunt		Magic Show		Picture This		Gender Wars		GAGA Ball								
OCEANEER LAB 3-12 YEARS OLD	Friendship Bracelets		Charades		Piston Cup Challenge		Get the Hook		4 Corners		Cartoon Corner										
	Anyone Can Cook		Stop The Boat		Games Galore																
OCEANEER CLUB 3-12 YEARS OLD	Create A Picture Frame		Magic Playfloor		Bingo		Coloring Corner		Camp Rocking Out!		Cartoon Corner										
	Ball Games		Dance Party																		

Symbol for activities that will be repeated during the cruise

Youth Activities Open House

FOLD

Fold along the dotted lines and take me with you so you don't miss any of the fun!

FOLD

IN THE SPOTLIGHT SERIES
SOLVE IT! SERIES

JUMP UP! SERIES
CREATE & INVENT SERIES

CLUBHOUSE SERIES
STORYBOOK SERIES



