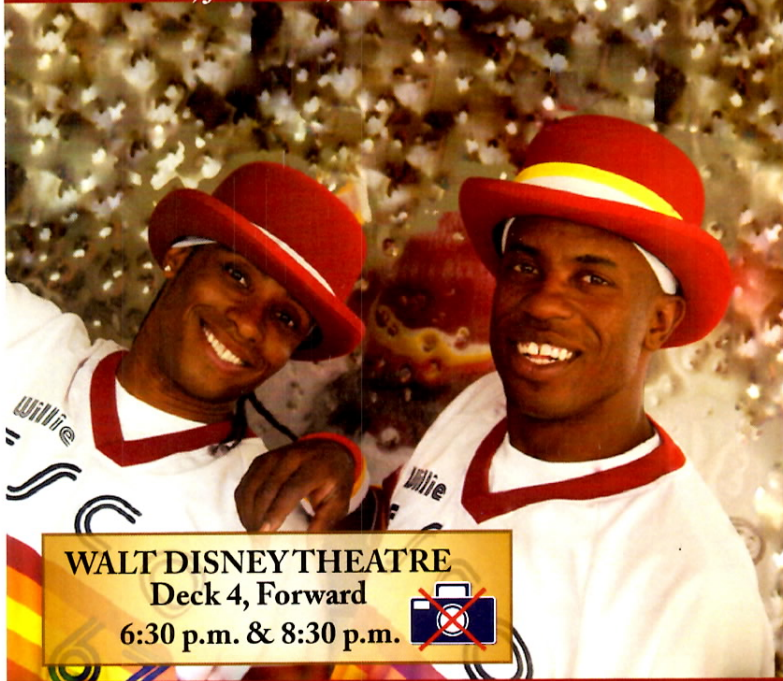


# PERSONAL NAVIGATOR

TUESDAY, JUNE 25, 2013

Sunrise: 5:47 a.m. Sunset: 8:22 p.m.  
 Evening Attire: Semi Formal  
 All Ashore: 7:45 a.m.  
 All Aboard: 5:00 p.m.  
 Tuesday: Sunny High: 73°F/23°C  
 Wednesday: Sunny High: 77°F/25°C


VALLETTA




SHOWTIME  
featuring

**Alfred & Seymour**

Enjoy the High Energy Comedy of Alfred & Seymour as they entertain the entire family!

WALT DISNEY THEATRE  
Deck 4, Forward  
6:30 p.m. & 8:30 p.m. 

 Assistance available at the entrance to the Walt Disney Theatre 30 minutes prior to show time.

## Welcome To Valletta, Malta

The history of the Maltese Islands goes back some 7,000 years, to the dawn of civilization. Malta and Gozo are the home to mysterious prehistoric temples that pre-date the pyramids of Egypt and Stonehenge in England.

The Roman Empire dominated the islands from about 218BC. Malta changed hands a number of times after the Roman rule, most notably under the Arabs from 870AD. Other occupiers included the Byzantines, the Normans and the Swabians and the Aragonese.

In 1530, the Knights of the Order of Saint John arrived in Malta. During their rule, the Order fought off the great Ottoman Empire of Turkey in the famous Great Siege of Malta.

The period of leadership under the Knights ended in 1798 when Napoleon Bonaparte took the islands, but this occupation was short lived when the Maltese revolted against the French and the islands fell under the protection of the British Empire in 1800.

Malta became an independent state within the British Commonwealth in 1964 and became a Republic ten years later.

Malta, officially the Republic of Malta, is a small and densely populated island nation comprising an archipelago of seven islands, three of which are inhabited. It is located in the Mediterranean Sea just 52 miles south of Sicily, giving the country a warm, inviting Mediterranean climate. The island is 17 miles long and 9 miles wide.



### Disney Cruise Line PORT ADVENTURES IMPORTANT INFORMATION

Please check your tour tickets for meeting times and locations. Visit the Port Adventures Desk, Deck 3, Midship for any questions.

### DINNER MENU

Animator's Palate: Captain's Gala  
 Parrot Cay: Captain's Gala  
 Lumière's: Captain's Gala

### DRINK OF THE DAY

Paradise Punch (Alcoholic)  
 Pina Smoothie  
 (Non Alcoholic)

### IMPORTANT NUMBERS

Fire/Security: 7-3001  
 Medical Emergency: 7-3000  
 Health Center: 7-1923



# FUN FOR ALL AGES HIGHLIGHTS

## GIANT JENGA

*Promenade Lounge, Deck 3, Aft - 10:15 a.m.*  
Join your Cruise Staff for some fun and games.

## FAMILY CRAFTS

*Promenade Lounge, Deck 3, Aft - 11:00 a.m. 3:30 & 4:45 p.m.*  
Create a fun souvenir with your Cruise Staff that is yours to keep.

## DISNEY TRIVIA

*Promenade Lounge, Deck 3, Aft - 1:00 & 10:15 p.m.*  
Navigate your way through another round of questions to test how much you really know about Disney.

## THE WHEEL

*Promenade Lounge, Deck 3, Aft - 2:45 p.m.*  
A special version of this popular TV game show.

## PICTIONARY CHALLENGE

*Promenade Lounge, Deck 3, Aft - 6:30 & 8:30 p.m.*  
Joining your Cruise Staff as we put your drawing talents to the test.

## WHO WANTS TO BE A MOUSEKETEER?

*Studio Sea, Deck 4, Midship - 7:45 & 9:45 p.m.*  
Your chance to get in to the "hot seat" and win limited edition prizes. Or, play along as part of our live studio audience.

## SPECIAL GUEST PRESENTATION TODAY

BARCELONA: GAUDI, GAUDY, AND ALLURE  
FEATURING GLEN DOLBERG, HISTORIAN  
*Buena Vista Theatre, Deck 5, Aft - 7:45 p.m.*

What started as Art Nouveau suddenly switched to surreal - and the world has never been the same. Wild, senseless, bright splashes of color and form actually do have meaning and purpose? Mode and modern hardly describe the "new" reality of the unreal in such a fabulous city.

# ADULT ACTIVITY HIGHLIGHTS

## VISTA SPA FITNESS CLASSES & SEMINARS



*Morning Stretch* - Vista Spa Fitness Center - 7:30 a.m.  
*Drab to Fab Seminar* - Vista Spa Fitness Center - 10:00 a.m.  
*Facial Workshop* - Vista Spa Fitness Center - 11:00 a.m.  
*The Golden Look* - Vista Spa Fitness Center - 2:00 p.m.  
*The Art Of Massage Class* - Vista Spa Fitness Center - 4:00 p.m.

CLUB  
18+21

## SOCIAL

*Diversions, Deck 3, Forward - 10:00 p.m.*

## INFORMAL CARD PLAY

*Diversions, Deck 3, Forward - 4:00 p.m.*  
Join some of your fellow Guests for some informal card play.

## LIVE MUSIC OF TIM MOSS

*Sessions, Deck 3, Forward - 7:45, 9:45, 10:45 & 11:45 p.m.*  
Join Tim Moss as he plays live for your listening enjoyment.

## VARIETY SHOW: SCOTT PEPPER

*Rockin' Bar D, Deck 3, Forward - 10:30 p.m.*  
Featuring the Magic and Illusion of Scott Pepper, in this Adult exclusive cabaret style show.

## ROCKIN' ROWDY

*Rockin' Bar D, Deck 3, Forward - 11:00 p.m.*  
Join your Club Host Tisa, as we round up the greatest classic rock and urban country hits. Featuring a bootstomping performance from the Boot Scootin' dancers to start the party.



## DOUBLE-UP JACKPOT BINGO

**Rockin' Bar D, Deck 3, Forward**

**Card Sales - 7:30 p.m.**

**Game Starts - 7:45 p.m.**

Special double up session: All electronic cards purchased will be doubled! The snowball jackpot currently standing at over \$5,500 continues to grow and could be won today!



# YOUTH ACTIVITIES HIGHLIGHTS

## DINE & PLAY

A convenience for families dining at 8:30 p.m., our Youth Activities Counselors will be available at 9:30 p.m. at the entrance of Lumière's, Parrot Cay and Animator's Palate dining rooms to bring registered children to join the fun in the Oceaneer Club and Oceaneer Lab.



**Deck 5, Aft (7-5864) 7:00 a.m. - 12:00 mid**

Infants and Toddlers can enjoy toys and activities at Flounder's Reef Nursery. Reservations are first come, first served so please stop by!



**Deck 5, Midship (7-1440) (3-12 years old) 7:00 a.m. - 10:00 p.m.**

## ALADDIN'S FUN ADVENTURES

2:15 p.m.

Come join us as we go on a fun-filled Arabian adventure, discover a flying carpet and find the hidden Genie.

## PLUTO'S PAJAMA PARTY

9:00 p.m.

Bring the little ones in their pajamas but there will be anything but sleep when Pluto and friends host the ultimate slumber party!



**Deck 5, Midship (7-1445) (3-12 years old) 10:00 a.m. - 12:00 mid**

## ANIMATION CELLS

2:00 p.m.

Learn what it takes to be a Disney Animator, then put your new skills to the test as you create your very own animation cell.

## PISTON CUP CHALLENGE

8:30 p.m.

It's Dinoco time and you're part of the pit crew! Design your own race car and see if you've got what it takes to end up in the Winner's Circle!



**Deck 2, Midship (7-5816) (11-14 years old) 9:00 a.m. - 1:00 a.m.**

## GENDER WARS

7:30 p.m.

It's the battle of girls vs. boys...who will dominate to win the ultimate battle?



**Deck 11, Midship (7-18517) (14-17 years old) 12:00 p.m. - 2:00 a.m.**

## LIGHTS, CAMERA, IMPROV!

8:00 p.m.

Perform an improv skit as you discover the wonders of drama and music on stage in front of a live audience.

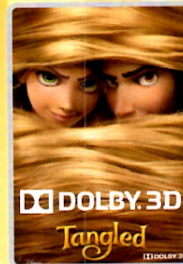
## GAGA BALL

10:00 p.m.

Come take part in this great game as you try to outlast your opponents.

# BUENA VISTA THEATRE

## Today's Movies



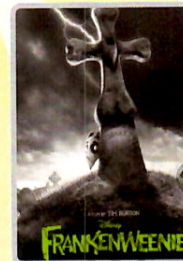
9:00 a.m.  
Duration:  
1 hr 40 min  
Rating: PG



11:00 a.m.  
Duration:  
1 hr 55 min  
Rating: G



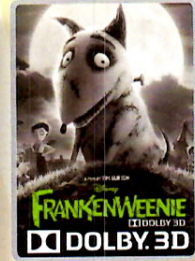
1:00 p.m.  
Duration:  
1 hr 40 min  
Rating: G



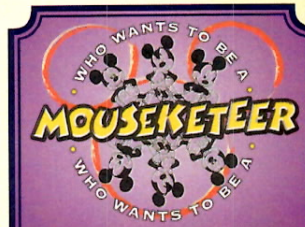
3:00 p.m.  
Duration:  
1 hr 24 min  
Rating: PG



5:30 & 9:00 p.m.  
Duration:  
1 hr 55 min  
Rating: G



11:15 p.m.  
Duration:  
1 hr 24 min  
Rating: PG



Your chance to get into the world famous hot seat and win an exclusive prize in our version of the well known television game show.

*Studio Sea,  
Deck 4, Midship,  
7:45 & 9:45 p.m.*



## ADULT CABARET

Featuring the Magic & Illusion of Scott Pepper, as he entertains you in this adult exclusive show.

*Rockin' Bar D (18+)  
Deck 3, Forward,  
10:30 p.m.*

## YOUTH ACTIVITIES OPEN HOUSE

Open House is an opportunity for all to come and participate in a variety of exciting activities and free time in the Oceaneer Club, Lab, Vibe and Edge throughout the cruise. During these times secured programming will still be offered in the other venue for those looking to check their children into care.

**Edge:** 9:00 a.m. - 10:30 a.m.  
**Disney's Oceaneer Lab:** 10:00 a.m. - 1:00 p.m.  
**Disney's Oceaneer Club:** 1:30 p.m. - 5:00 p.m.



# MORE TO ENJOY WHILE ONBOARD



## DISNEY VACATION CLUB® GROUP PREVIEW

Want to learn more about taking magical vacations year after year? Please see a Disney Vacation Club representative on Deck 4, Midship, or call 7-2805 from your stateroom phone for more information about our interactive group presentation.



## PLAN YOUR NEXT CRUISE

Avoid the evening rush and visit the Future Cruise Sales desk early for your last chance to save 10% on your next cruise, receive up to a \$200 onboard credit, and pay a reduced deposit!

## DEBARK TALK BROADCAST

Important information regarding disembarkation procedures for Barcelona and your journey home will be covered in this debarkation briefing. The broadcast will be shown continuously beginning at noon on channel 25-4 of your stateroom television for your convenience.



VISTA SPA

Deck 9, Forward - Phone : 7-1465

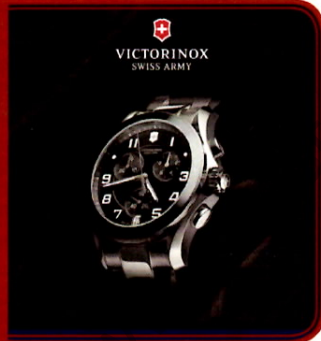
## TREAT YOURSELF

Pamper yourself and receive all of the following treatments below:  
Back massage, scalp massage, skin specific minifacial, and foot & ankle massage for only \$99.

VICTORINOX  
SWISS ARMY

A universal symbol of functionality, innovation, quality and iconic design.

Available in Treasure Ketch, Deck 4, Forward.



## SMILE!

Tonight is your last chance to have portraits of family and friends taken by your professional photographers. Portraits will be available in the Lobby Atrium, Deck 3, Midship from

5:15 p.m. - 6:15 p.m., 7:30 p.m. - 8:30 p.m., and 9:30 p.m. - 10:30 p.m.

## TRANSPORTATION INFORMATION

Today is your last chance to purchase transportation to the Barcelona airport. Please come past the Guest Services Desk, Deck 3, Midship.

## EARLY FLIGHT INFORMATION

Should you have a flight out of the Barcelona airport prior to 10:30 am on June 27th, kindly bring your airline tickets to Guest Services on Deck 3, Midship for additional information and assistance.

## CASH DECLARATION NOTICE

Guests going ashore in port with over 10,000 Euros (or cash equivalent in any other currency), are required to declare it to Customs upon arrival, or risk having it confiscated if stopped by local authorities.



Explore the historical treasures of Malta's capital city, Valletta a UNESCO World Heritage site since 1980. Learn about history, myths and legends, with highlights including the Upper Barracca Gardens & the Toy Museum or Visit Mdina, the Silent City and Mosta, known for its famous domed church. All these tours are still available at the Port Adventures Desk located Deck 3, Midship. Visit our friendly and knowledgeable team today for last minute bookings!

## SHOPPING

### ART GALLERY

Toy Story, Monster's Inc., Finding Nemo, Up - what's your favorite Disney-Pixar film? You have a chance to purchase a piece of Disney-Pixar artwork to take home with you today! Just stop by the Art Gallery to see the Disney-Pixar Collection. Deck 4, Midship.

### BOLD ITALIAN JEWELRY BY DELATORI

Where can you find fine Italian jewelry with bright and bold designs? By visiting Treasure Ketch today, you'll discover DeLatori, an Italian 925 Sterling Silver and semi-precious stone fine jewelry brand. DeLatori pieces incorporate exotic gems and nature-inspired concepts that create fresh and new looks with exquisite details. Deck 4, Forward.

### HELPFUL SHOPPING TIP

While shopping onboard, you may collect your items from both stores before proceeding to checkout at any register. No need to have to wait in line at each store to pay for your items separately! Mickey's Mates and Treasure Ketch, Deck 4, Forward.

### DELIGHTFULLY DESIGUAL

Brighten up your outfit with a stylish handbag designed by Desigual! With their fun prints and bright colors, find the Desigual handbag that most inspires you by visiting Treasure Ketch today. Deck 4, Forward.

### STYLISH TIMEPIECES BY PHILIP STEIN

Take the time to visit Treasure Ketch and discover the wide selection of luxury brand timepieces available including sophisticated designs from Philip Stein. With elegant pieces from the Signature Collection and the unique Sleep Bracelet designed to improve your quality of sleep, Philip Stein provides the wearer with a sense of style and serenity. Treasure Ketch, Deck 4, Forward.

### OFFICER PIN TRADING

Come and trade pins with the officers of the Disney Magic at 7:30 p.m. in Preludes, Deck 4, Forward.

Due to port regulations, when the ship is docked, the stores will remain closed.

## IMPORTANT INFORMATION

### Security Notice

All Guests (including Children) who wish to disembark or embark the ship are required to present their Key to the World card at the gangway. A photo ID is also required for those Guests who are 18 years of age or older. Guests under the age of 18 are required to have a Parent, Guardian or other responsible adult sign an authorization form at the time it is given out if they wish to go ashore unaccompanied. Authorization forms are available at the gangways and Guest Services.

### Cold and Flu Reminder

Please wash hands frequently and thoroughly, particularly before meals. Contact the Health Center by dialing 7-1923, should anyone in your party become ill.

### Inclement Weather

For the safety of all Guests, outdoor events may be changed due to unforeseen weather conditions.

### Corridor Quiet Hours

As a courtesy to all our Guests, please recognize quiet hallway hours from 10:00 p.m. til 8:00 a.m.

### Environmental Message

With Disney's commitment to the Environment please refrain from throwing anything over the Ship's side. Thank you.

### No Reserved Seats Policy

As a courtesy to all Guests we kindly advise that the saving of seats is not permitted in the Walt Disney Theatre, and the saving of the sun loungers is not permitted on Deck 9 and 10. Items left unattended will be returned to lost and found at Guest Services, Deck 3, Midship.

### Smoking

For the comfort of our Guests the following open deck areas on the Starboard Side are designated as Smoking areas:  
Deck 4 Starboard side from 6:00pm to 6:00am ONLY, Deck 9 Forward Starboard side at Quiet Cove and Deck 10 Starboard side.  
Smoking is prohibited in all Guest staterooms. Guests found smoking in their staterooms will be charged a \$250 stateroom recovery fee. Electronic cigarettes may only be used in designated smoking areas.

### Sunscreens Advisory

Don't forget to apply sunscreen and insect repellent when going ashore.

### Walt Disney Theatre

Theatrical performances may use artificial fog, strobe lights, pyrotechnics and other special effects. For the safety of our performers and the comfort of those around you, the use of any photography or video recording device or any electronic equipment is prohibited.

### Verandah Safety

Please do not leave any combustible materials on your balcony when not present in your stateroom for safety reasons.



Morning	8:45	9:00	9:15	9:30	9:45	10:00	10:15	10:30	10:45	11:00	11:15	11:30	11:45	12:00	12:15	12:30	12:45	1:00	1:15	1:30	1:45		
FUNNEL VISION	Tinker Bell (G) Funnel Vision											A Bug's Life (G) Funnel Vision											
BUENA VISTA THEATRE	Tangled (PG)						Monsters University (G)						Finding Nemo (G)										
CHARACTER																							
FUN FOR ALL AGES	Giant Jenga Promenade Lounge											Crafts: Autograph Books Promenade Lounge			Ping Pong Wide World Of Sports Deck			Disney Trivia Promenade Lounge					
ADULTS	Friends of Bill W. Memorial's Palace < begins 8:30 am		Drab to Fab Seminar Vista Spa Fitness Center						Facial Workshop Vista Spa Fitness Center														
VIBE 14-17 YEARS OLD												Craft Corner				Cards Tournament							
EDGE 11-14 YEARS OLD	Open House											Craft Time											
OCEANEER LAB 3-12 YEARS OLD												Open House "Eggsperiments" 10:30 a.m. - 11:15 a.m.											
OCEANEER CLUB 3-12 YEARS OLD												Wacky Relay Races				Lunch				Open House			
OUT AND ABOUT	Open House Edge																						

Afternoon	2:00	2:15	2:30	2:45	3:00	3:15	3:30	3:45	4:00	4:15	4:30	4:45	5:00	5:15	5:30	5:45	6:00	6:15	6:30	6:45	7:00											
FUNNEL VISION	The Emperor's New Groove (G) Funnel Vision											WALL-E (G) Funnel Vision																				
BUENA VISTA THEATRE	Frankenweenie (PG) Duration: 1 Hour 24 Minutes						Monsters University (G) Duration: 1 Hour 55 Minutes																									
CHARACTER												Mickey & Minnie Dk 4, Mid				Donald, Daisy Dk 4, Mid																
FUN FOR ALL AGES	Wii Challenge Promenade Lounge				The Wheel Promenade Lounge				Family Crafts Promenade Lounge				Shuffleboard Deck 4, Midship				Cruisin' for Trivia Diversions				Family Tunes with DJ Wendell Promenade Lounge				Showtime: Alfred & Seymour Walt Disney Theatre							
ADULTS	The Golden Look Vista Spa Fitness Center				LIVE Music with Tony Delaney Quiet Cove Pool				Informal Card Play Diversions				LIVE Music with The Dreamers Quiet Cove Pool				Guest DJ Miss Ninja Goofy Pool stage				Crafts: Origami Favorites Promenade Lounge				LIVE Music with Charlie Reuter Lobby Atrium				Pictionary Promenade Lounge			
VIBE 14-17 YEARS OLD	Xbox Challenge											Scavenger Hunt										Wii Sport Challenge				Mad Gab						
EDGE 11-14 YEARS OLD												Bingo										Sports Deck Fun										
OCEANEER LAB 3-12 YEARS OLD																						Dinner										
OCEANEER CLUB 3-12 YEARS OLD	"Aladdin's Fun Adventures" 2:15 p.m. - 3:00 p.m.											"Swingin' Like Tarzan" 4:00 p.m. - 4:45 p.m.				Open House				Memory Wall				Dinner								
OUT AND ABOUT																						Sports Deck Fun Edge										

Evening	7:15	7:30	7:45	8:00	8:15	8:30	8:45	9:00	9:15	9:30	9:45	10:00	10:15	10:30	10:45	11:00	11:15	11:30	11:45	12:00	12:15						
FUNNEL VISION	WALL-E (G) Funnel Vision											Pirates of the Caribbean 3 (PG-13) Funnel Vision															
BUENA VISTA THEATRE	Gaudi, Gaudy, and Allure Buena Vista Theatre						Monsters University (G) Duration: 1 Hour 55 Minutes						Frankenweenie (PG)														
CHARACTER	Mickey & Minnie Dk 4, Mid				Donald, Daisy Dk 4, Mid				Mickey & Minnie Dk 4, Mid				Donald, Daisy Dk 4, Mid				Goofy Dk 4, Mid										
FUN FOR ALL AGES	Who Wants to be a Mouseketeer? Studio Sea				Showtime: Alfred & Seymour Walt Disney Theatre				Who Wants to be a Mouseketeer? Studio Sea				Family Superstar Karaoke Studio Sea				Bingo Pre Sales Rockin' Bar D				Double Up Jackpot Bingo Rockin' Bar D						
ADULTS	Guest DJ Miss Ninja Promenade Lounge				Pictionary Promenade Lounge				Live Music with The Dreamers Promenade Lounge				Disney Trivia Promenade Lounge				Live Music with The Dreamers Promenade Lounge				Family Tunes with DJ Wendell Promenade Lounge						
VIBE 14-17 YEARS OLD	Mad Gab				Lights, Camera, Improv!				Gender Wars				GAGA Ball				Piano & Vocals of Tim Moss Sessions				Guest DJ Miss Ninja Rockin' Bar D						
EDGE 11-14 YEARS OLD	Gender Wars											Invade the Club															
OCEANEER LAB 3-12 YEARS OLD																											
OCEANEER CLUB 3-12 YEARS OLD																											
OUT AND ABOUT																						Invade the Club Disney's Oceaneer Club					

Symbol for activities that will be repeated during the cruise

FOLD

Fold along the dotted lines and take me with you so you don't miss any of the fun!

FOLD

THE 40+ ENTERTAINMENT SERIES

THE 40+ SERIES

THE 40+ SERIES



TUESDAY, JUNE 25, 2013 - VALLETTA

IMPORTANT NUMBERS

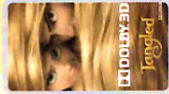
Fire/Security: 7-3001  
Medical EMERGENCY: 7-3000  
Health Center: 7-1923

**DINNER MENU**  
Animator's Palate: Captain's Gala  
Parrot Cay: Captain's Gala  
Lumiere's: Captain's Gala  
Dining Times: 6:00pm & 8:30pm  
**Evening Attire: Semi Formal**

**DRINK**  
Paradise Punch  
(Alcoholic)  
Prima Smoothie  
(Non - Alcoholic)

**WEATHER FORECAST**  
Tuesday: Sunny  
High: 73 F/23°C  
Wednesday: Sunny  
High: 77 F/25°C

# BUENA VISTA THEATRE



9:00 a.m.  
Duration: 1 hr 40 min  
Rating: PG

11:00 a.m.  
Duration: 1 hr 55 min  
Rating: G

3:00 p.m.  
Duration: 1 hr 24 min  
Rating: PG

5:30 & 9:00 p.m.  
Duration: 1 hr 55 min  
Rating: G

11:15 p.m.  
Duration: 1 hr 24 min  
Rating: PG

## Character Appearances

**MICKEY & MINNIE**  
Deck 4, Midship - 5:15 p.m.,  
7:30 p.m. & 9:30 p.m.

**DONALD & DAISY**  
Deck 4, Midship - 6:00 p.m.,  
8:15 p.m. & 10:00 p.m.

**GOOXY**  
Deck 4, Midship - 10:30 p.m.



Don't forget your Camera to capture those Magical Moments!

Check here each day for Character appearances. For detailed Character appearance information, please dial 7-PALS or see the Character Information Board in the Lobby Atrium. Meet-and-Greets will be advertised for the length of time the line will be open. To avoid disappointment, please meet at start time of appearances.

## YOUTH ACTIVITIES THEMED EXPERIENCES

**CLUBHOUSE SERIES**  
focuses on movement and features content which appeals to younger children.

**JUMP UP! SERIES**  
includes large group games & movement-oriented activities.

**SPOTLIGHT SERIES**  
focuses on children's stage presence with lots of activities and enthusiasm.

**STORYBOOK SERIES**  
is designed with a strong connection to the Disney classic stories.

**CREATE & INVENT SERIES**  
will have a tactile focus allowing children to create and admire their work.

**SOLVE IT! SERIES**  
are less active, but will challenge children with problem/solutions-based activities.

### YOUTH ACTIVITIES OPEN HOUSE

A non-secured program with activities for families, adults and children of all ages to enjoy together.

## SHIP DIRECTORY

### YOUTH ACTIVITIES

DISNEY'S OCEANEER CLUB	7:00 AM - 10:00 PM
DISNEY'S OCEANEER LAB	10:00 AM - 12:00 MID
EDGE	9:00 AM - 1:00 AM
FOUNDER'S REEF NURSERY	7:00 AM - 12:00 MID
VIBE	12:00 PM - 2:00 AM

### RECREATION

GOOXY'S POOL	DECK 9, MID	6:00 AM - 12:00 MID
MICKY'S POOL	DECK 9, AFT	8:00 AM - 10:00 PM
MICKY'S SLIDE	DECK 9, AFT	11:00 AM - 5:30 PM
MICKY'S SPLASH ZONE	DECK 9, AFT	10:00 AM - 8:00 PM
PORT ADVENTURES DESK	DECK 3, MID	7:00 AM - 9:00 AM
QUIET COVE POOL	DECK 9, FWD	6:00 AM - 12:00 MID
VISTA FITNESS CENTER	DECK 9, FWD	6:30 AM - 10:00 PM
WIDE WORLD OF SPORTS DECK	DECK 10, FWD	24 HOURS

### GENERAL INFORMATION

BUENA VISTA THEATRE	DECK 5, AFT	SHOWTIMES
DISNEY VACATION CLUB DESK	DECK 4, MID	6:00 PM - 11:00 PM
FUTURE CRUISE SALES DESK	DECK 4, MID	5:00 PM - 10:00 PM
FUNNEL VISION	DECK 9, MID	SHOWTIMES
GUEST SERVICES	DECK 3, MID	24 HOURS
HAIR BRAIDING	DECK 9, MID	
MEDICAL HEALTH CENTER	DECK 1, FWD	9:30 AM - 11:00 AM
PORT & SHOPPING DESK	DECK 3, MID	4:30 PM - 7:00 PM
PRELUDES	DECK 4, FWD	7:30 PM - 8:30 PM
QUARTER MASTERS (ARCADE)	DECK 9, MID	5:45 PM - 6:30 PM
SHUTTERS PHOTO GALLERY	DECK 4, AFT	8:00 PM - 8:45 PM
VISTA SPA AND SALON	DECK 9, FWD	24 HOURS
WAIT DISNEY THEATRE	DECK 4, FWD	6:00 PM - 11:00 PM
		8:00 PM - 10:00 PM
		SHOWTIMES

### SHOPPING

MICKY'S MATES	DECK 4, FWD	5:30 PM - 12:00 MID
TREASURE KETCH	DECK 4, FWD	5:30 PM - 12:00 MID
ART GALLERY	DECK 4, MID	5:30 PM - 11:00 PM
UP-BEAT	DECK 3, FWD	5:30 PM - 12:00 MID

## DINING & LOUNGES

### BEVERAGES

GOOXY'S GALLEY	DECK 9, AFT	6:00 AM - 9:00 AM
LUMIERE'S (A-LA CARTE)	DECK 3, MID	7:30 AM - 9:00 AM
PARROT CAY	DECK 3, AFT	7:00 AM - 10:30 AM
TOPSIDERS BUFFET	DECK 9, AFT	6:15 AM - 10:00 AM

### LUNCH

GOOXY'S GALLEY	DECK 9, AFT	10:45 AM - 6:30 PM
LUMIERE'S	DECK 3, MID	12:00 PM - 1:30 PM
PINOCCHIO'S PIZZERIA	DECK 9, MID	10:45 AM - 6:00 PM
PLUTO'S DOG HOUSE	DECK 9, AFT	10:45 AM - 6:00 PM
TOPSIDERS BUFFET	DECK 9, AFT	12:00 PM - 2:00 PM

### DINNER

ANIMATOR'S PALATE	DECK 4, AFT	6:00 PM & 8:30 PM
LUMIERE'S	DECK 3, MID	6:00 PM & 8:30 PM
PALO*	DECK 10, AFT	6:00 PM - 8:30 PM
PARROT CAY	DECK 3, AFT	6:00 PM & 8:30 PM
PLUTO'S DOG HOUSE	DECK 9, AFT	6:00 PM - 10:00 PM
TOPSIDERS CASUAL DINING	DECK 9, AFT	6:30 PM - 8:30 PM

\* TO BOOK YOUR TABLE, PLEASE CALL 7-6843

### LATE NIGHT SNACKS

DIVERSIONS	DECK 3, FWD	11:00 PM - 11:45 PM
ICE CREAM AT GOOXY'S GALLEY	DECK 9, AFT	6:00 PM - 11:00 PM
PINOCCHIO'S PIZZERIA	DECK 9, MID	9:30 PM - 12:00 MID
PROMENADE LOUNGE	DECK 3, AFT	11:00 PM - 11:45 PM

### ADDED FEATURES

BEVERAGE STATION	DECK 9, AFT	24 HOURS
ROOM SERVICE	DIAL 7-4330	24 HOURS

### ENTERTAINMENT - LOUNGES - BARS

Adults must be 21 and older to consume alcoholic beverages.

BEAT STREET	DECK 3, MID	(AFTER 9:00 PM, ADULTS ONLY)
COVE CAFE (18+)	DECK 9, MID	6:00 AM - 12:00 MID
DIVERSIONS (18+)	DECK 3, FWD	5:00 PM - 12:00 MID
INTERNET CAFE	DECK 3, AFT	24 HOURS
PRELUDES	DECK 4, FWD	5:45 PM - 6:30 PM
		8:00 PM - 8:45 PM
PROMENADE LOUNGE	DECK 3, AFT	9:00 AM - 12:00 MID
PINOCCHIO'S PIZZERIA	DECK 9, MID	9:30 AM - 12:00 MID
PLUTO'S DOG HOUSE	DECK 9, AFT	11:00 AM - 6:00 PM
ROCKIN' BAR D (18+)	DECK 3, FWD	7:00 PM - 2:00 AM
SESSIONS (18+)	DECK 3, FWD	6:00 PM - 12:00 MID
SIGNALS (18+)	DECK 9, FWD	10:00 AM - 10:30 PM
STUDIO SEA	DECK 4, MID	SHOWTIMES

Consumers who order raw or partially-cooked, ready-to-eat food of animal origin, are hereby informed that the food is not sufficiently cooked to ensure its safety.

All Ashore: Approx. 7:45 a.m.  
All Aboard: 5:00 p.m.

### Ship's Agent In Valetta

O.F. GOLLCHEK & SONS, LTD  
19 Zachary Street, Valletta VLT 1133 - Malta  
Joseph Azzoparchi - Manager Operations  
Tel: +356 2569 1000 / +356 2123 4195



# VALLETTA

## SHOPPING MAP

### AT A GLANCE

**Capital:**  
Valletta

**Location:**  
Eastern Malta

**Population:**  
8,500

**Language:**  
Maltese and English

**Currency:**  
The Euro is the currency of Valletta

**Banking:**  
Most banks are open  
weekdays 8:30am – 12:30pm  
and Saturday 8:30am – 11:30am

**Post Office:**  
The main post office is open  
weekdays 8:15am – 3:45pm and  
Saturday 8:15am – 12:30pm;  
branch offices are open  
Monday through Saturday  
7:30am – 12:45pm

**Transportation:**  
Taxis are available at the ships pier

**Shopping Hours:**  
Shops are generally open  
Monday through Saturday 9:00am to 1:00pm  
and 4:00pm to 7:00pm – closed on Sunday.  
The recommended shops will be open  
all day when the ship is in port

Browse your Destination Guide  
(found in your stateroom)  
for more details.

### PORT ADVENTURERS...

Check your ticket for the correct meeting time and location of your tour. Your Port Adventures Team will direct you to transportation.

### DON'T FORGET YOUR...

Photo ID and Key to the World Card as well as Cash and/or Credit Cards. Do you have your VIP cards?



### CHANNEL 25-3...

Watch channel 25-3 for insider tips on how to spend your free time, before or after your tour and where to find the best local goods ashore! Stop by Gemma's desk for more information to help create the best experience for you and your family!

### SHOPPING GUIDE





# PORT SHOPPING MAP







*Notes*

**1 THE MALTA EXPERIENCE**

*Find the Ideal Souvenir as a Memento of a Memorable Stay*

- 45-minute audiovisual highlighting 7,000 years of Malta's history
- One of the best souvenir shops with an extensive selection
- Books of Malta's rich and colorful history and traditions
- Maltese handicrafts: Gozo lace, silver filigree, pottery, and glass
- Glass from the glass blowing factories of Mdina, Mtarfa, and Gozo
- Variety of prints depicting Maltese scenes in posters and postcards
- Mystic Blue, Malta's fragrance packaged with a Maltese cross
- Taste the original Maltese Bajtra Liqueur, made from the prickly pear
- Enjoy the experience and bring home a piece of Maltese history
- 10% Discount for cruise passengers (Show, Shop and Cafeteria)
- Situated within St. Elmo Bastions in Valletta
- Visited by well over four million visitors since inception



*www.castawayclub.com*

*Valletta*

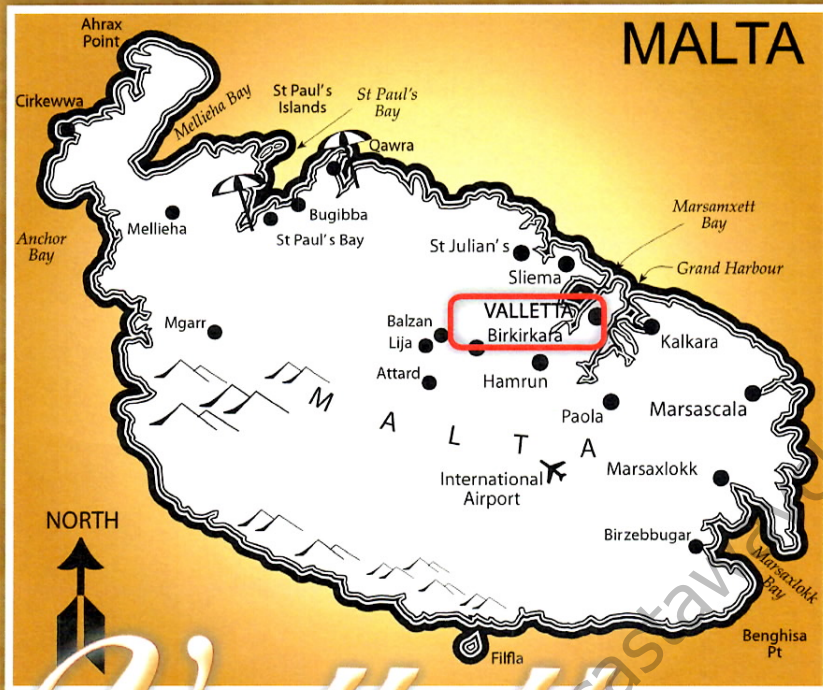


LOOK FOR THE ALL ASHORE LOGO FOR YOUR RECOMMENDED AND GUARANTEED STORES!

**All Ashore**

**VAT REFUND PROGRAM** Value Added Tax (VAT) is a tax refund program in which non-European Union citizens may be entitled to reclaim a portion or all of the tax paid for items purchased in participating stores. Each store's participation in the VAT refund program is discretionary. In most cases, VAT is already added to the purchase price. Please note that regulations and conditions governing the refund of VAT are subject to change. It is the responsibility of the cruise ship guest to inquire about a store's VAT refund program participation and if their purchase qualifies. For information about participating stores listed on this map, please see your Shopping Guide.





## AN OVERVIEW OF VALLETTA

The three small islands that make up the Republic of Malta have long held the attention of the world, from the days of crusading knights to World War II action, all due to Malta's strategic location. Malta's islands are positioned in the Mediterranean, just south of Sicily, a point that commands access not only to Europe but to Northern Africa and the Middle East as well.

Bustling Malta, rugged Gozo, and nearly uninhabited Comino long have been one of the world's busiest cultural crossroads, and influences of the region's many cultures are seen in everything from its cuisine to its architecture. Even the Maltese language is a mélange of influences, and is the only Arabic root language written with Roman characters.

Those crossroads—or, in this case, sea-lanes—converge on Malta, the largest island in the Republic of Malta. For years, the sea has brought travelers into Malta's capital city of Valletta, whose shimmering blue harbor is a stark contrast to the limestone walls that outline the city. The harbor that now welcomes cruise ships first greeted Phoenician traders 3000 years ago. Later, the Knights of Malta journeyed here to protect pilgrims on the way to the Holy Land during the Crusades.

The city itself dates back to 1566 when its cornerstone was laid by the Grandmaster of the Order of Saint John, Jean Parisot de la Valette. From its beginning, the city assumed a strong military posture with thick city walls, an imposing fort, and other extensive fortifications throughout the city, many of which survived extensive bombing during World War II.

Today memories of the Knights can be found along the cobblestone streets of Valletta. St. John's Co-Cathedral brims with artwork and treasures including "The Beheading of Saint John the Baptist," the largest single work (and the only signed painting) by Michelangelo Merisi da Caravaggio as well as an extensive collection of seventeenth-century Flemish tapestries. Just down the street stands the Palace of the Grand Masters, now home of the Parliament of Malta, where two-inch-high steps were constructed so the knights could ascend in full armor.

Valletta's heavy stone fortifications are best seen in the early morning light when the limestone glows with the golden promise of the day ahead. Just outside the walls stands the Barracca Gardens, where knights once exercised in the clear morning.

### IN CASE OF EMERGENCY...

Valletta (Malta): Port Agent – O.F. Gollcher & Sons, Ltd.  
[www.gollcher.com](http://www.gollcher.com)  
 19 Zachary Street, Valletta VLT 1133, Malta  
 Port Agent – Joseph Azzopardi  
 E-mail: [contact@gollcher.com](mailto:contact@gollcher.com), [jazzopardi@gollcher.com](mailto:jazzopardi@gollcher.com)  
 Call: 011+(356) 256-91100  
 24 hr 011+(356) 7949-2969  
 Fax: 011+356 256-212-34195  
 Karl Gollcher e-mail [kgollcher@gollcher.com](mailto:kgollcher@gollcher.com)  
 Cell: 011+(356) 7942-1914



Shop with confidence at each of the recommended stores. All stores listed on the map have paid a promotional fee and given Disney Cruise Line guests a Buyer's Guarantee valid for 60 days after purchase. This guarantee is valid for repair or exchange. Please note the following conditions that apply to the guarantee: Guest negligence or buyer's regret is excluded. Only appraisals from independent, accredited graduate gemologists not affiliated with any retail jeweler will be considered. Electronics and watches requiring service must be returned by the consumer to the respective manufacturer. All purchases, including fragile items, must be checked before leaving the store. Do not mail merchandise without prior authorization. Guests are responsible for postage and appraisal costs. PPI Group, 6261 NW 6th Way, Suite 100, Ft. Lauderdale, FL 33309, Customer Service: 1.888.774.4768 or 954.377.7777, email: [Service@ppigroup.com](mailto:Service@ppigroup.com) European guests may contact: [rcentofanti@ppigroup.com](mailto:rcentofanti@ppigroup.com), +39 338 8687581.