

ENSENADA

SHOPPING MAP

ALL ASHORE!

An Overview of Ensenada

Ensenada is the third-largest city in the Mexican state of Baja California. It is located 40 miles south of San Diego.

The city had a 2010 census population of 689,075.

Ensenada is the municipal seat of Ensenada Municipality, one of the five municipalities into which the state is divided. The city is locally referred to as La Cenicienta del Pacifico or The Cinderella of the Pacific. It is important to note that the municipality of Ensenada is the largest in the world and has two national parks located in the southeast of the city.

The National Park Constitution of 1857 formed Sierra de Juarez and San Pedro Martir National Parks.

The best astronomical observatories in the country is found in one of these parks.

Located in the Bahía de Todos Santos - an inlet of the Pacific Ocean on the Baja Gold Coast - the Port of Ensenada is an important commercial, fishing and cruise ship port. The city is home to a navy base, army base and military airfield, functioning as an airport of entry into Mexico.

The city is backed by small mountain ranges. Due to its location on the Pacific Ocean and Mediterranean latitude, the weather tends to be mild year-round. Although the winter rain season is short and the area is prone to prolonged droughts, Ensenada sits in the heart of a wine country that is widely regarded as the best in Mexico, and the Americas, alongside Napa Valley in California. It is said that the first vitis vinifera (common grape vine) made it to the peninsula (specifically to the San Ignacio Mission) in 1703, when Jesuit Padre Juan de Ugarte planted the first vineyards there.

The gray whale's annual migration from Alaska to the lagoons of Baja California Sur between the months of December and March, and back in the months of April and May, can be seen from the coast of Ensenada. Sightseeing tours are available every day during migration season. In addition, a few minutes south of town on Highway 1 is the second largest of three known major marine geysers in the world. This one is known as "La Bufadora" (the blowhole).

Remember to stick with the guaranteed stores on your shopping map!

Watch channel 24.6 for more Information!

Don't forget your...

- ✓ Cash and/or Credit Cards
- ✓ Photo ID ✓ VIP Cards
- ✓ Key to the World Card

Ensenada at a Glance

Capital: Mexico City

Location: Ensenada lies 68 miles south of Tijuana and the San Ysidro, U.S. border

Transportation: Taxi, tour buses, shuttle, city buses available

Currency: The peso is the official currency of Mexico. Nevertheless, most businesses in Ensenada accept American dollars

Language: Spanish is the official language, but English is commonly understood and spoken in most stores and restaurants

Population: Approximately 400,000 people live in the Ensenada area

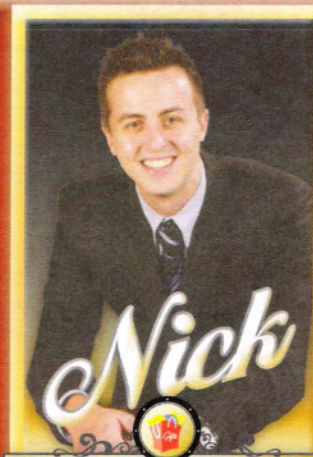
Banking: Banks are open from 8:00 am to 5:00 pm, Monday through Friday

Port Adventures:

Check your ticket for the correct meeting time and location for your tour. Your Port Adventures Team will direct you to transportation. Taxi service is available outside the cruise ship terminal.

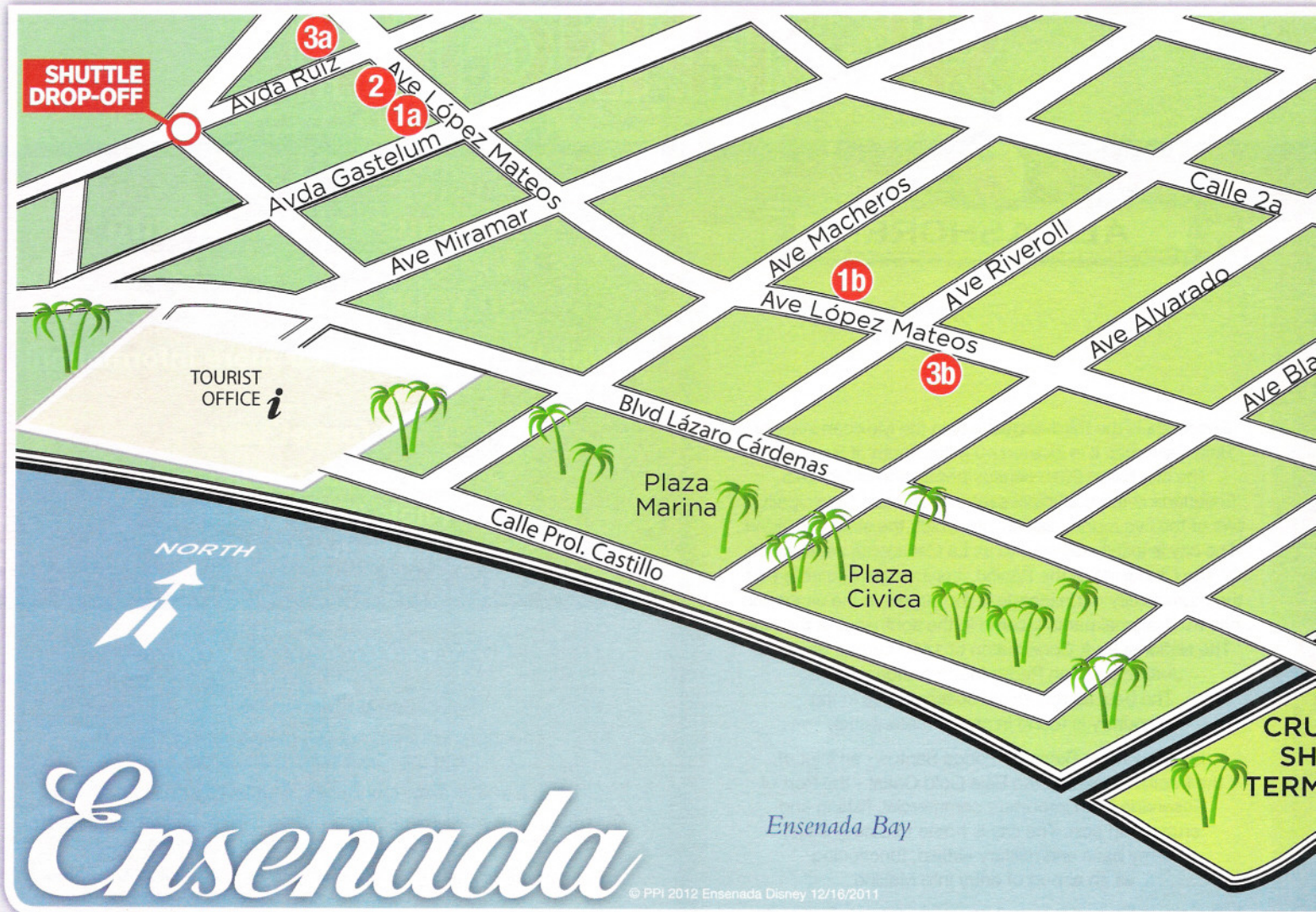
In Case of Emergency:

Agencia De Buques Gil Ojeda
Cdte Virgilio Uribe 496-A,
Ensenada BC, Mexico 22800
Port Agent: Jorge Ojeda
Cell: 011 + 52-646-178-3615
e-mail agojeda@telnor.net
Assistant: Lourdes Ojeda
Cell: 011+52-646-171-6157
Fax: 011+52-646-178-3036



SHOPPING GUIDE

PORT SHOPPING MAP



1a,b MARIO'S SILVER SHOP

Fine Selection of Silver and Leather

- Featuring high quality silver – .925 and .950 since 1970
- Beautifully designed fashion handbags
- Collectible Cow Parade figurines
- Lladró porcelain figurines at tax free prices
- Guitars from Paracho, Mexico
- Authentic handicrafts
- Major credit cards welcome
- Three locations along Avenue Lopez Mateos

2 BAZAR CASA RAMIREZ

Silver Jewelry and Beautiful Home Decorations

- Beautiful selection of Mexican folk art
- Variety of unique crosses, nativity scenes, and wood carvings
- See our unique "Day of the Dead" collection
- Guaranteed sterling silver at affordable prices
- Two floors of beautiful home items
- Home decor mirrors in different shapes and sizes

Topic of Cancer

Hawaii (US)

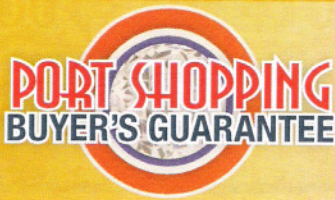
OCEAN

Topic of Cancer



Lined writing area for notes.

© PPI 2011 Ensenada Disney 04/26/2012



Shop with confidence at each of the recommended stores. All stores listed on the map have paid a promotional fee and given Disney Cruise Line guests a Buyer's Guarantee valid for 60 days after purchase. This guarantee is valid for repair or exchange. Please note the following conditions that apply to the guarantee: Guest negligence or buyer's regret is excluded. Only appraisals from independent, accredited graduate gemologists not affiliated with any retail jeweler will be considered. Price paid for merchandise or verbal claims or agreements between merchant and guest will not be grounds for returns. Electronics and watches requiring service must be returned by the consumer to the respective manufacturer. All purchases, including fragile items, must be checked before leaving the store. Do not mail merchandise without prior authorization. Guests are responsible for postage and appraisal costs. The PPI Group, 4517 NW 31st Avenue, Ft. Lauderdale, FL 33309-3403, Customer Service: 1.888.774.4768 or 954.377.7777, email: Service@ppigroup.com