

# HONOLULU

# SHOPPING MAP

## ALL ASHORE!

### *An Overview of Honolulu*

Geological evidence indicates Honolulu, Oahu evolved two million years ago after the formation of two separate volcanoes. King Kamehameha I (1753 - 1819) unified the islands under one rule and established his palace near what is now King Street.

In 1866, Mark Twain said that every step in the city revealed a new contrast. At one time Waikiki was a swampy marshland of taro patches and rice patties. The land was reclaimed in the early 1900s. Tourism began when the first hotel was built in 1901, the Moana Hotel. Then in 1920 the Royal Hawaiian Hotel opened. Honolulu means, "sheltered bay" in Hawaiian. Honolulu has the only natural harbor in the islands formed by fresh water. Oahu is the third largest island in the Hawaiian chain and has two large backbone mountain ranges with green vegetation. Several attractions are located near the ship's pier. The Maritime Museum salutes the island's diverse ocean heritage, features Polynesian voyaging canoes and The Falls of Clyde, the only fourmast, fully-rigged ship in the world at Pier 7. The Aloha Tower clock, next to the ship, was built by the E. Howard Clock Company of Boston. It weighs seven tons and is still weight-driven with pendulum time.

The distinct district of Waikiki is about three miles east of downtown, conspicuous not only for its towering hotels but also for the furrowed brow of another extinct volcano, Diamond Head. Waikiki is where the action is - an urban beach backed by 175 high-rises with more than 33,000 guest rooms, all along a one-and-a-half mile stretch. Waikiki is 30 minutes from pier. Although Waikiki is a small suburb, and one that most Honolulu residents rarely visit, for package tourists, it's the tail that wags the dog. They spend their days on Waikiki's beaches, and their nights in its hotels, restaurants, and bars; apart from a trip to the nearby Ala Moana shopping mall, the rest of Honolulu might just as well not exist. The city's 850,000 residents represent a melting pot of nationalities. Honolulu is the largest, most remote city on earth. It has the oldest Chinatown in America. Oahu residents own 600,000 vehicles, but only have 1,500 miles of mostly two lane roads. The city hosts the Pro Bowl at Aloha Stadium in February and welcomes five million visitors annually. The setting in Honolulu is beautiful, right on the Pacific Ocean and backed by the dramatic pali (cliffs) of the Ko'olau Mountains. Downtown Honolulu, centered around a group of administrative buildings that date from the final days of the Hawaiian monarchy, nestles at the foot of the extinct Punchbowl Volcano, now a military cemetery. It's a manageable size, and a lot quieter than its glamorous image might suggest. Immediately to the west is livelier Chinatown, while the airport lays four or five miles further west again, just before the sheltered inlet of Pearl Harbor.

STORE#

1

### MAUI DIVERS JEWELRY DESIGN CENTER

Ride the free shuttle that runs continuously from the ship's pier

STORE#

3  
a-c

### NA HOKU

Featured designs by Kabana, Wyland & Steven Douglas

## STOP BY THE SHOPPING DESK...

with any questions you might have regarding our exciting ports of call!

### *Honolulu at a Glance*

**Capital:** Honolulu

**Location:** Honolulu is located on the southeast coast

**Transportation:** Taxi, tour buses, shuttle, city buses available

**Currency:** U.S. Dollar

**Language:** English and Hawaiian

**Population:** Approximately 905,034

**Banking:** Banks are everywhere throughout North and South King Street, Bishop Street and Kapiolani Blvd

**Post Office:** A U.S. Post Office located inside Ala Moana Center

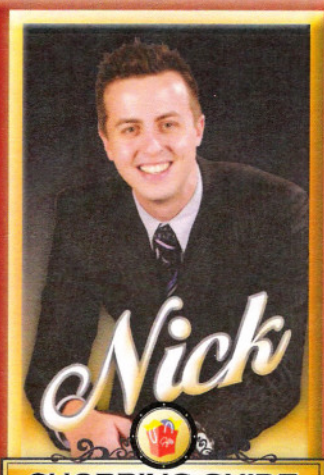
**Airport:** Honolulu International Airport located three miles northwest of the city's central business district. Main roads leading to the airport are Nimitz Highway and the Queen Liliuokalani Freeway of Interstate H-1

### Port Adventures:

Check your ticket for the correct meeting time and location for your tour. Your Port Adventures Team will direct you to transportation. Taxi service is available outside the cruise ship terminal.

### In Case of Emergency:

Inchcape Shipping Services  
Foreign Trade Zone #9, 521 Ala Moana Blvd,  
Suite 2256, Honolulu, HI 96813  
Tel: (808) 599-8604  
Fax: (808) 529-8603



SHOPPING GUIDE



# PORT SHOPPING MAP



## 1 MAUI DIVERS JEWELRY DESIGN CENTER

### *Hawaii's Only Black Coral History & Jewelry Factory Tour*

- Ride the free shuttle that runs continuously from the ship's pier
- Service to Ala Moana Center & Waikiki after tour, time permitting
- Win prizes – ask for your free treasure chest key
- Enjoy a 20 minute complimentary tour of the design center
- See black coral – Hawaii's official state gemstone transformed into jewelry
- Featuring Hawaiian jewelry – diamonds, pearls, coral and more
- All jewelry is backed with a full lifetime guarantee
- Open daily 8:00am – 5:30pm

## 2 MAUI DIVERS JEWELRY

### *Lifetime Guarantee Since 1958*

- This Maui Divers Jewelry location is inside the Hilo Hattie store
- Take the free Hilo Hattie shuttle or visit us at Ala Moana Center
- Win prizes – ask for your free treasure chest key
- Visit Maui Divers Jewelry, Hawaii's widest selection of fine jewelry
- Black Tahitian, South Sea pearls, diamonds and other fine gems
- All jewelry is backed with a full lifetime guarantee
- Hawaiian jewelry, Wyland & other marine life charms
- Maui Divers is the largest jewelry designer in Hawaii

## 3a-c NA HOKU

### *Fine Jewelers Since 1924*

- Unbelievable selection of Hawaiian and island lifestyle jewelry
- All pieces are designed to accent individuality, taste and style
- Beautiful Tahitian, Akoya and freshwater pearls
- Magnificent colored gems, diamonds and heirloom jewelry
- Excellent quality and expert craftsmanship
- Beautifully hand-engraved floral and sea life designs
- Featured designs by Kabana, Wyland and Steven Douglas
- Locations: Lewers St. & Kalia Rd., Ala Moana, Hilton Hawaiian Village

## 4a-c PEARL FACTORY

### *Hawaii's Original "Pearl-in-the-Oyster"*

- All of our pearls come from genuine saltwater cultured oysters
- Assure the quality you expect; select your own oyster
- Watch as the oyster is opened and a beautiful pearl is revealed
- Choose from over 135 settings to create your own exquisite piece
- Something special in the style and price range suitable for all
- 14kt. gold jewelry designs are made locally in Honolulu
- Hilton Hawaiian Village, Intl Market Place and Waikiki Beach Walk

## 5 HILO HATTIE

### *Visit the Main Flagship Factory Store in Honolulu*

- The largest Aloha shirt in the Guinness Book of World Records
- Selection of Hawaiian gifts, souvenirs, fashions and T-shirts
- Largest manufacturer of Hawaiian resort and casual fashions
- Hundreds of clothing styles and exclusive Hawaiian prints
- Take the free shuttle from the ship's pier directly to Hilo Hattie
- Visit Maui Divers Jewelry located inside this store

## 6 BUBBA GUMP SHRIMP CO.

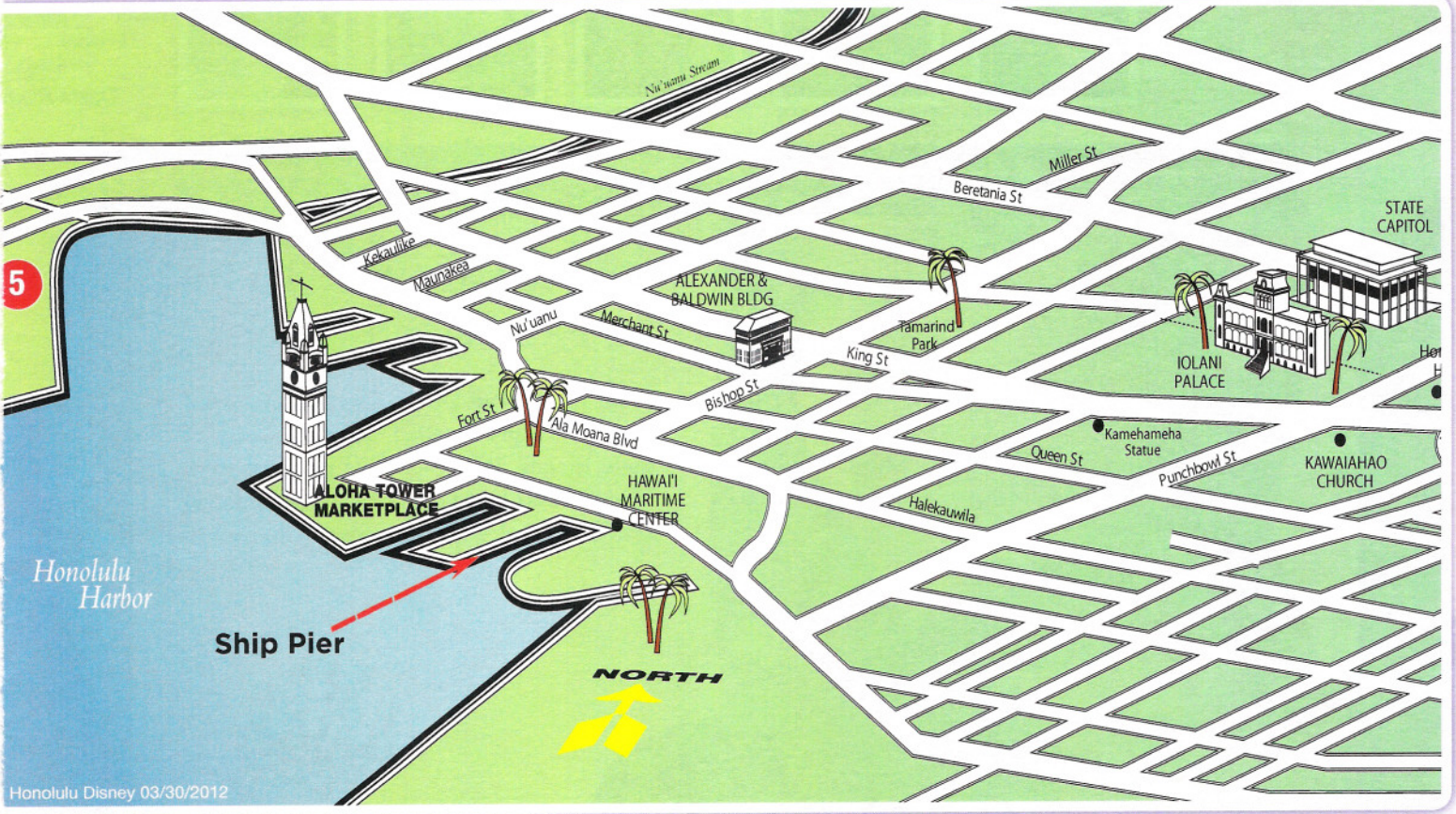
### *Quality Seafood in a Casual, Family and Friendly Environment*

- Located on the top level of Ala Moana Shopping Center
- Friendly service and delicious seafood the whole family will enjoy
- Treat yourself to a great meal and a memorable experience
- Restaurant theme is based on the movie "Forrest Gump"



© PPI 201





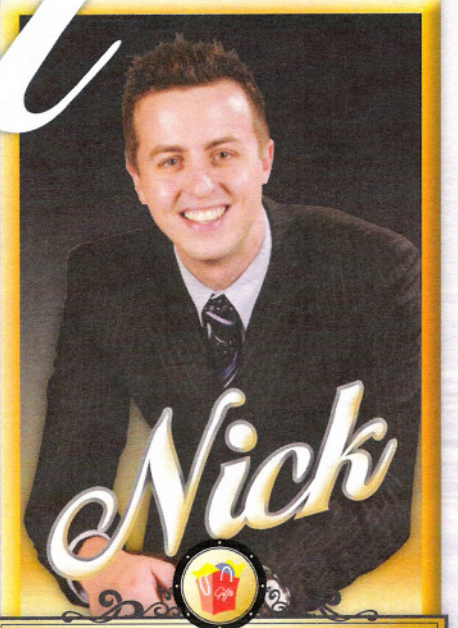
# Honolulu

**DON'T FORGET YOUR**

- ✓ FREE Diamond Charm Bracelet Card
- ✓ Photo ID & Key to the World Card
- ✓ Cash and/or Credit Cards
- ✓ VIP Cards

**PORT ADVENTURES:**

Check your ticket for the correct meeting time & location for your tour.  
 Your Port Adventures Team will direct you to transportation.



**SHOPPING GUIDE**





Puerto Vallarta • Guadalajara • Leon • Tampico

María • Cancun

Belize

Belmopan

Honduras

Tegucigalpa

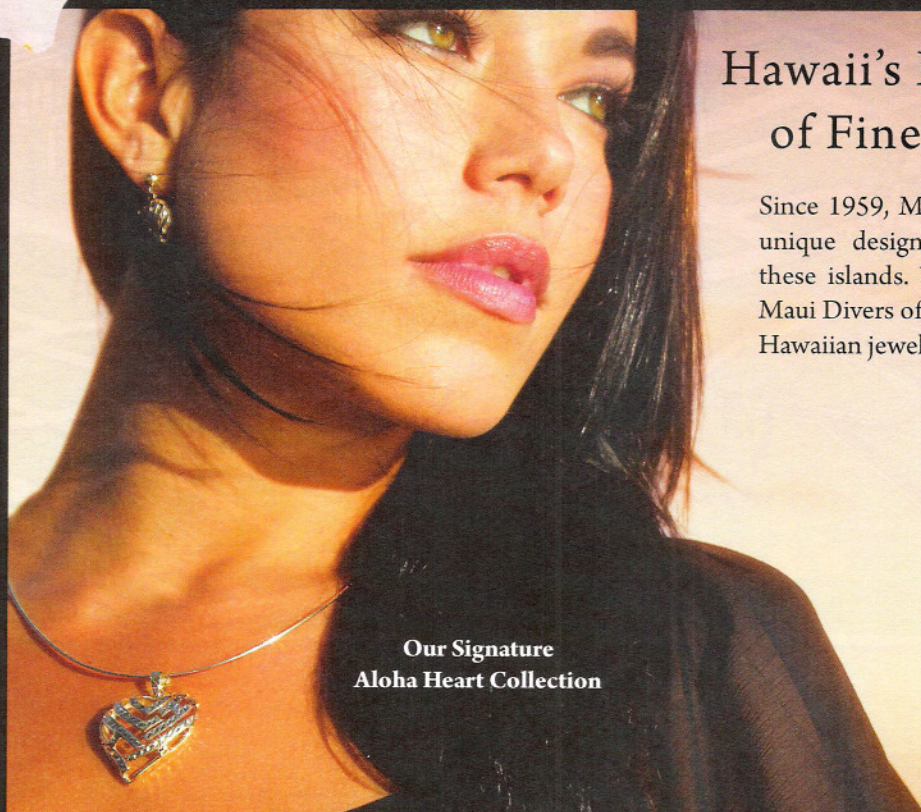
San Salvador

Nicaragua

Managua

San José

Costa Rica



Our Signature  
Aloha Heart Collection

## Hawaii's Largest Selection of Fine Island Jewelry

Since 1959, Maui Divers Jewelry has created unique designs inspired by the beauty of these islands. Whatever your personal style, Maui Divers offers Hawaii's finest selection of Hawaiian jewelry, island pearls and more.



*Maui Divers Jewelry*  
Island inspired, forever yours.

Over 50 locations including  
all Hilo Hattie stores  
800-253-6016 [mauidivers.com](http://mauidivers.com)

**Complimentary Sterling Silver Palm Tree Pendant and Chain  
with any \$50 minimum purchase\***

**\*Present this port map at time of purchase. Cannot be combined  
with other discounts or special offers. Subject to change and availability.  
Tax not included. Restrictions apply.**



### FREE SHUTTLE SERVICE FROM ALL PIERS

**OAHU**  
Maui Divers Jewelry Design Center  
Ala Moana Center  
International Marketplace  
Hilo Hattie Nimitz Highway

**MAUI**  
Queen Kaahumanu Center, Kaanapali  
Pioneer Inn, Lahaina  
Whalers Village, Kaanapali  
Hilo Hattie Lahaina

**KAUAI**  
Anchor Cove Shopping Center  
Hilo Hattie Lihue

**BIG ISLAND**  
Hilo Hattie Hilo

© PPI 2012 Honolulu Disney 04/27/2012

Shop with confidence at each of the recommended stores. All stores listed on the map have paid a promotional fee and given Disney Cruise Line guests a Buyer's Guarantee valid for 60 days after purchase. This guarantee is valid for repair or exchange. Please note the following conditions that apply to the guarantee: Guest negligence or buyer's regret is excluded. Only appraisals from independent, accredited graduate gemologists not affiliated with any retail jeweler will be considered. Price paid for merchandise or verbal claims or agreements between merchant and guest will not be grounds for returns. Electronics and watches requiring service must be returned by the consumer to the respective manufacturer. All purchases, including fragile items, must be checked before leaving the store. Do not mail merchandise without prior authorization. Guests are responsible for postage and appraisal costs. The PPI Group, 4517 NW 31st Avenue Ft. Lauderdale, FL 33309-3403, Customer Service: 1.888.774.4768 or 954.377.7777, email: [Service@ppigroup.com](mailto:Service@ppigroup.com).

